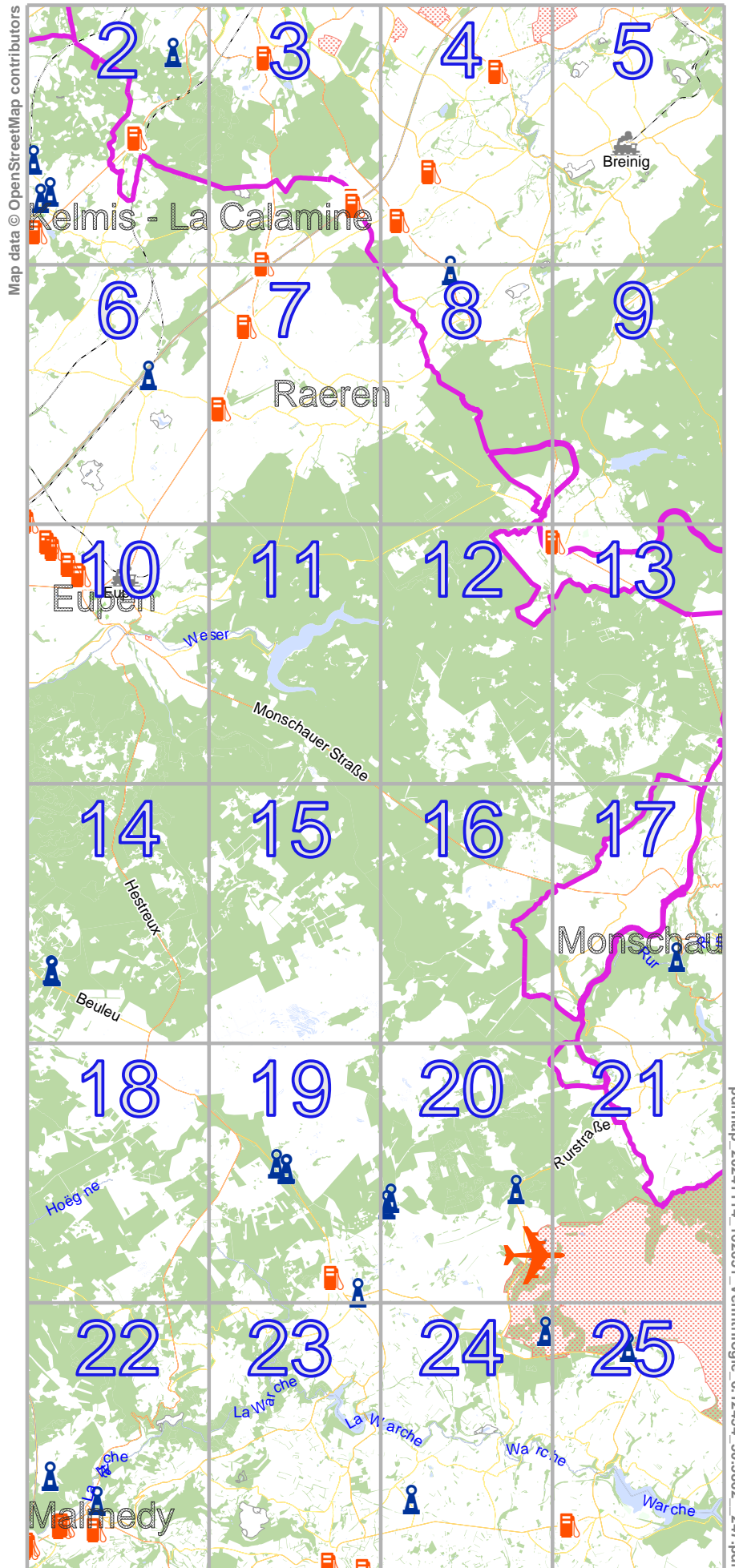


# Venrtrilogie

lon 6.24809 lat 50.76176

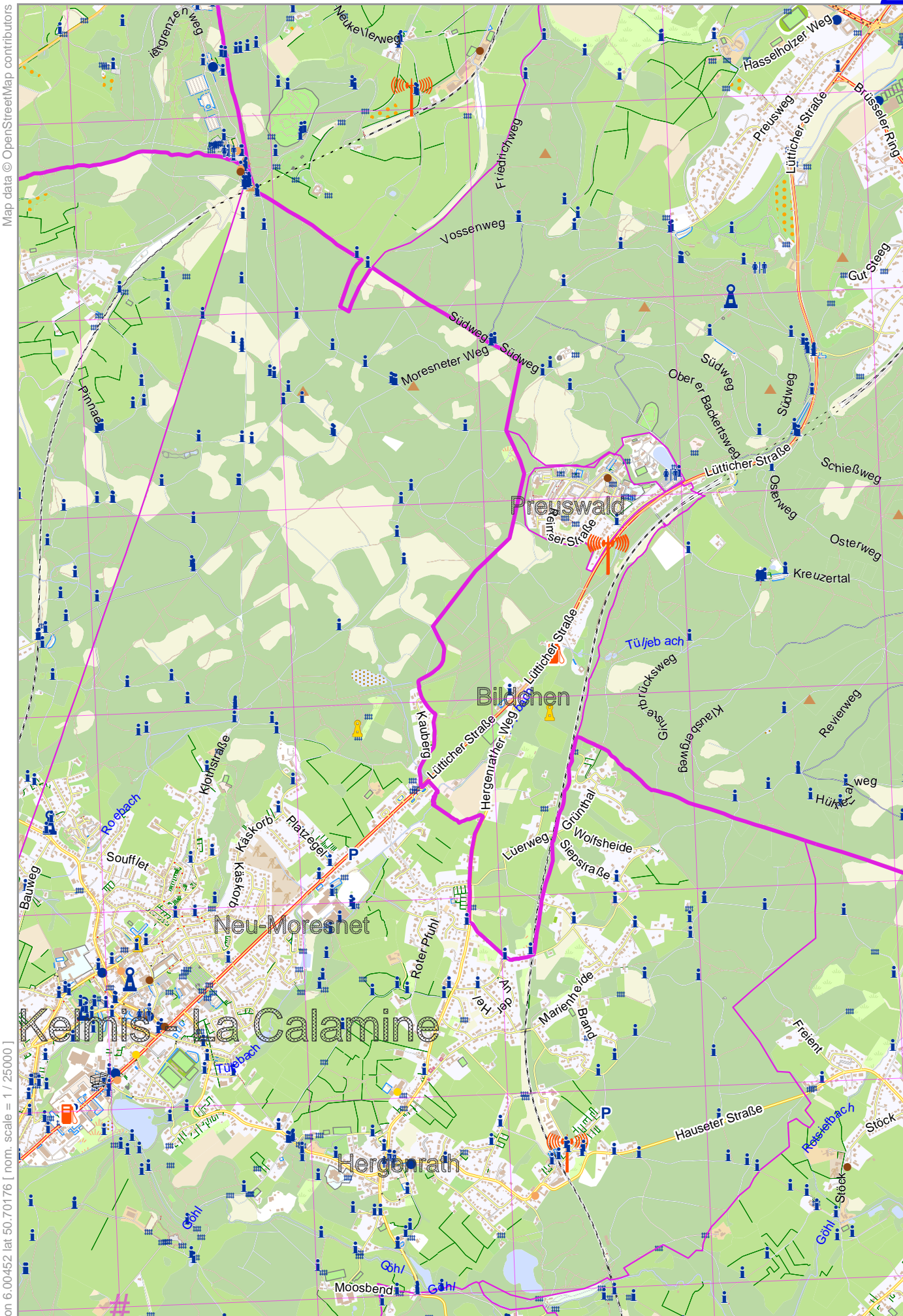


lon 6.00452 lat 50.41297  
[ nom. scale = 1 / 150000 ]

# Venrtrilogie

Map data © OpenStreetMap contributors

lon 6.06806 lat 50.76176



lon 6.00452 lat 50.70176 | nom. scale = 1 / 25000

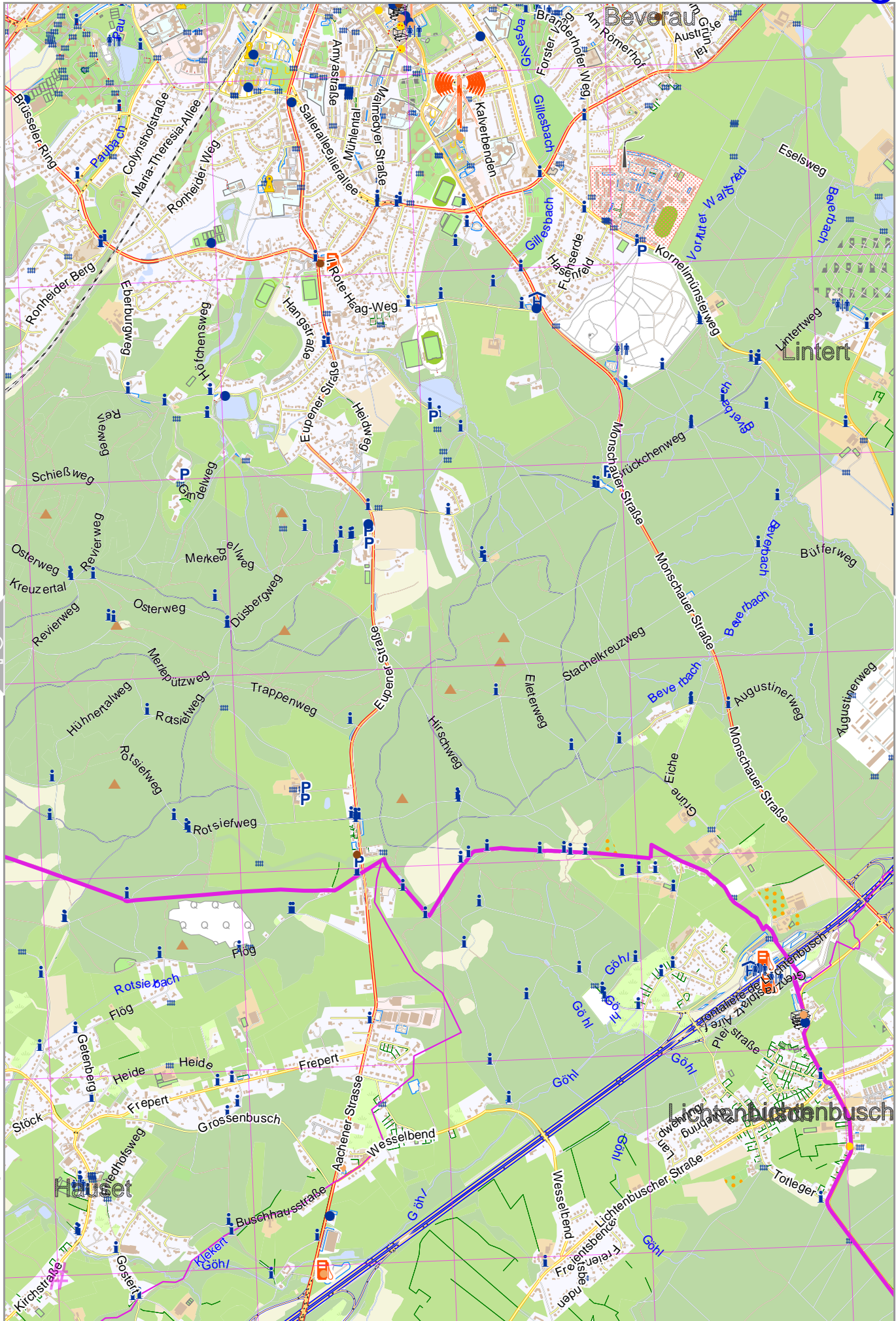
pdfmap\_20241114\_162651\_Venrtrilogie\_6-12454\_50-5862\_247.pdf

# UTM: 32 U easting 289.00 km northing 5621.00 km  
 UTM-Grid-width = 1000m

# Ventrilogie

Map data © OpenStreetMap contributors

lon 6.12807 lat 50.76176



lon 6.06453 lat 50.70176 [ nom. scale = 1 / 25000 ]

pdfmap\_20241114\_162651\_Ventrilogie\_6.12454\_50.5862\_247.pdf

# UTM: 32 U easting 293.00 km northing 5621.00 km  
UTM-Grid-width = 1000m

# Venrtrilogie

Map data © OpenStreetMap contributors

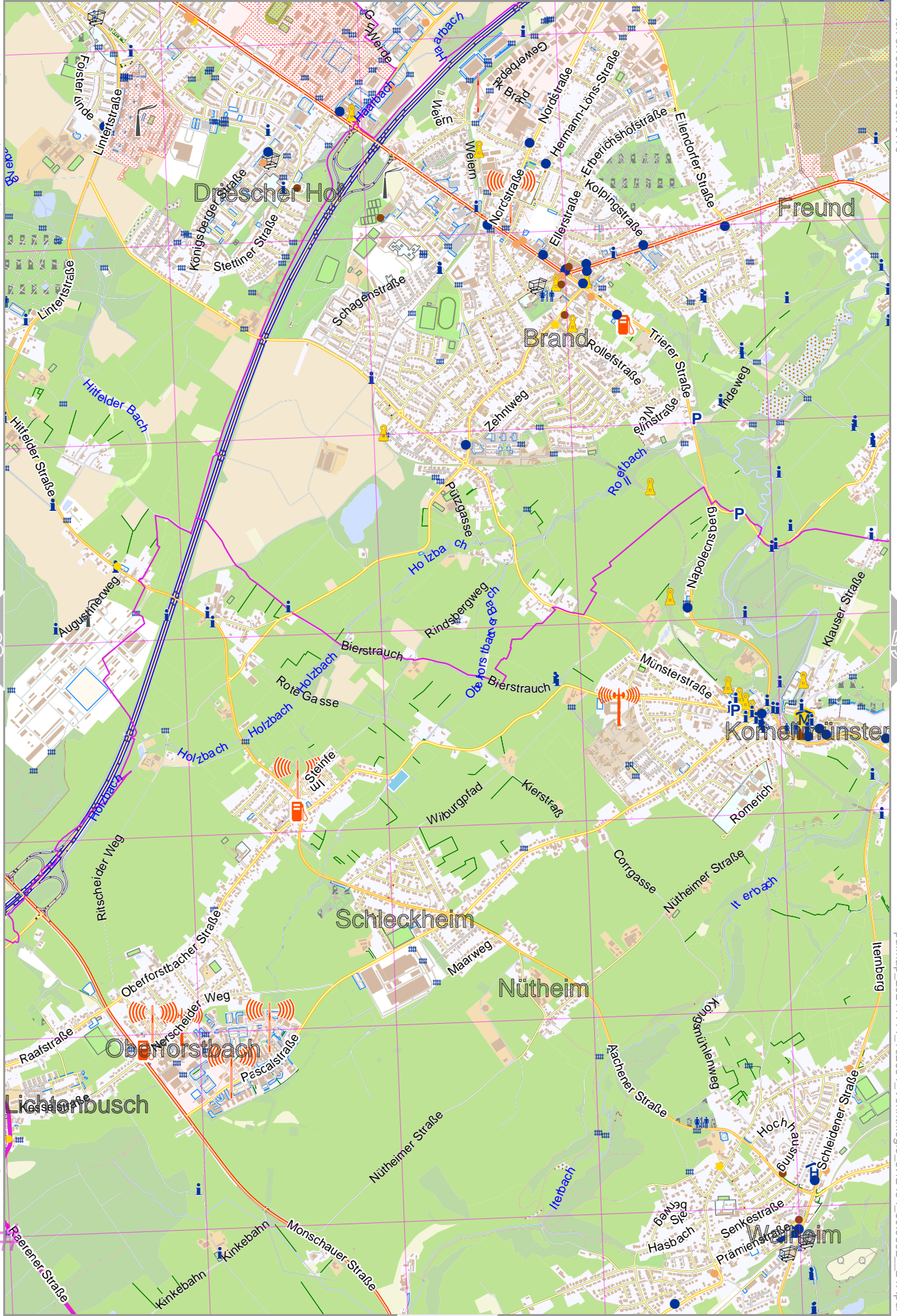
lon 6.18808 lat 50.76176



[ lon 6.12454 lat 50.70176 | nom. scale = 1 / 25000 ]

pdfmap\_20241114\_162651\_Venrtrilogie\_6.12454\_50.5862\_247.pdf

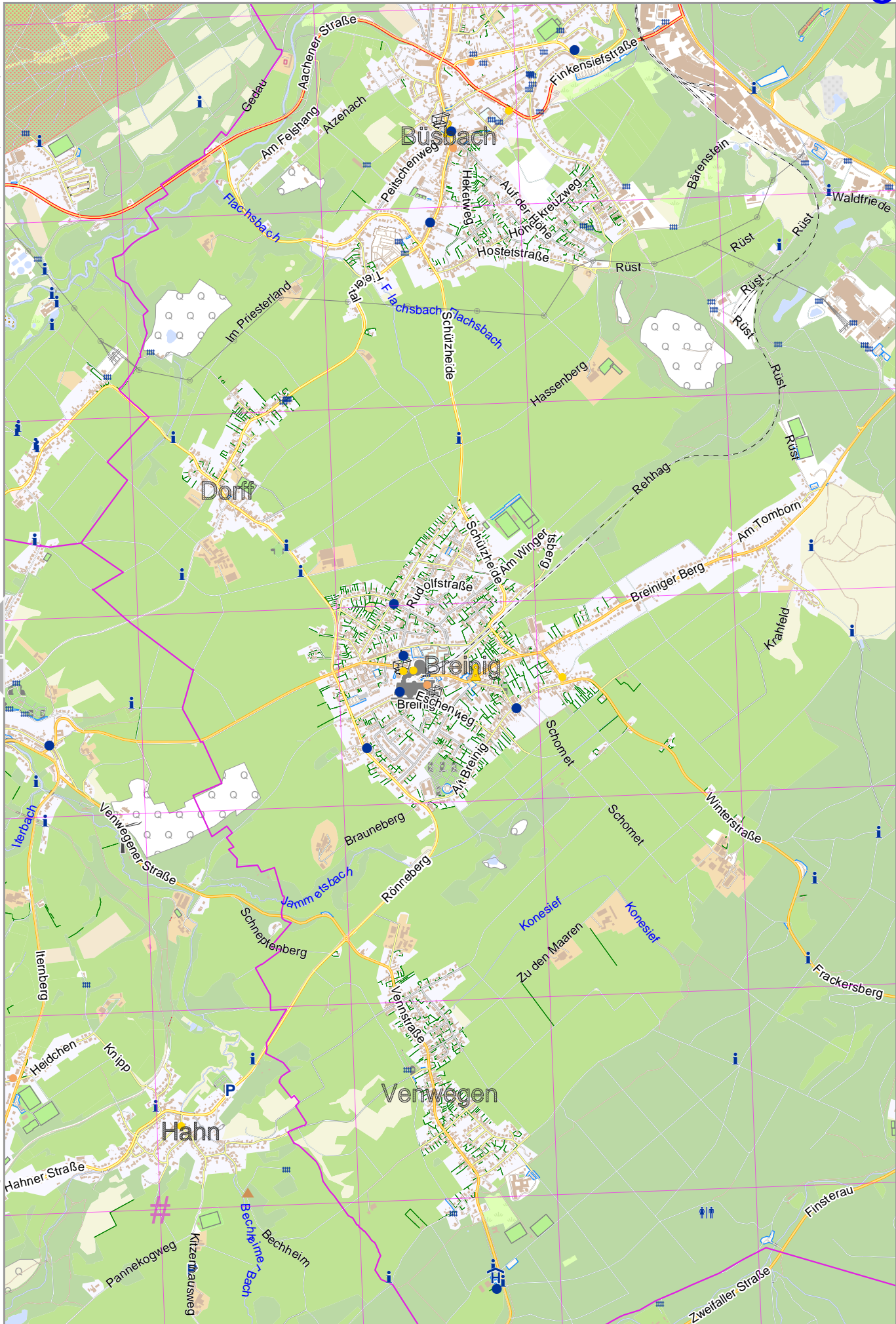
# UTM: 32 U easting 297.00 km northing 5621.00 km  
UTM-Grid-width = 1000m



# Venrtrilogie

Map data © OpenStreetMap contributors

lon 6.24809 lat 50.76176



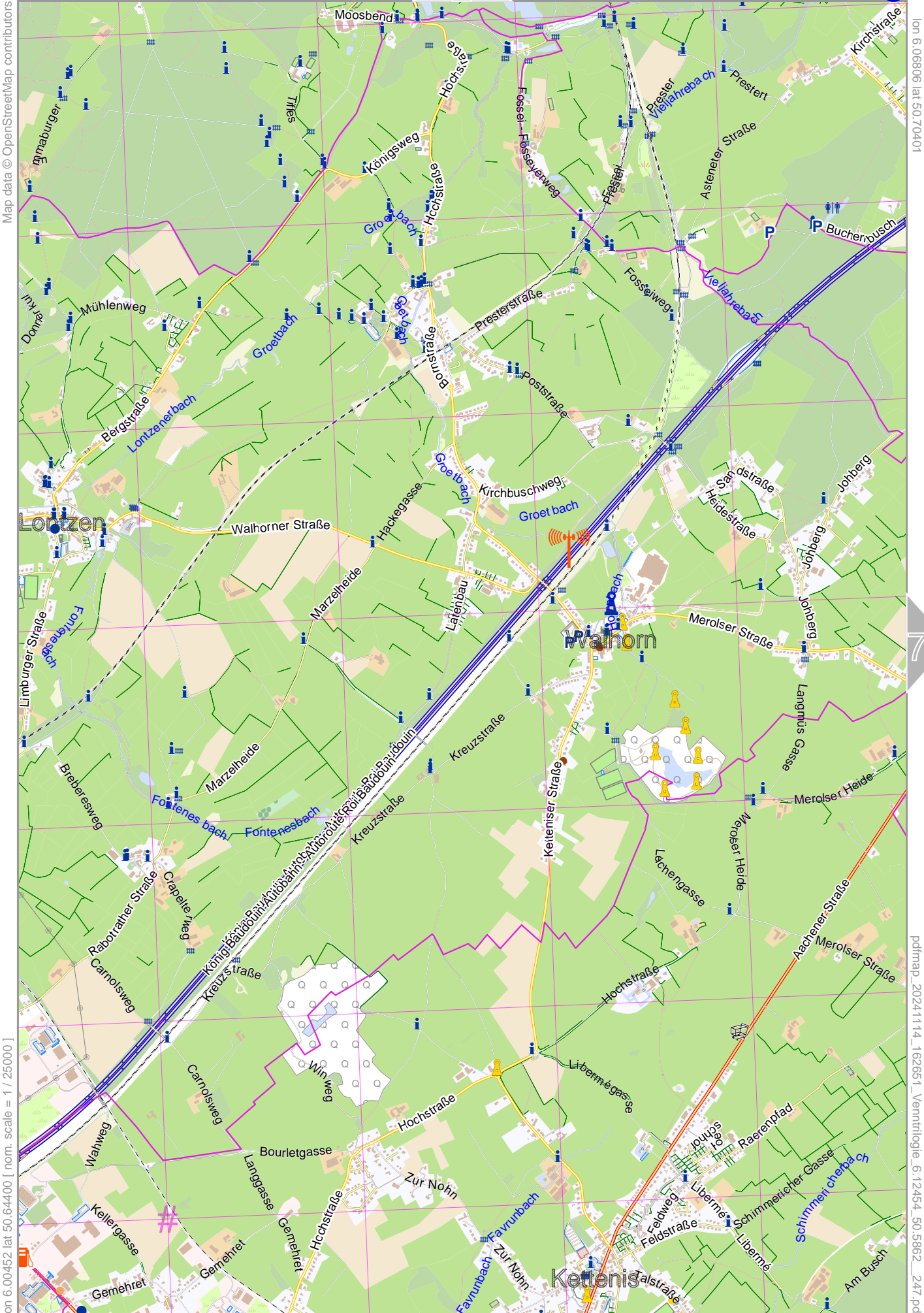
[lon 6.18455 lat 50.70176 | nom. scale = 1 / 250000]

pdfmap\_20241114\_162651\_Venrtrilogie\_6\_12454\_50\_5862\_247.pdf

# UTM: 32 U easting 302.00 km northing 5621.00 km  
UTM-Grid-width = 1000m

# Venrtrilogie

6



Map data © OpenStreetMap contributors

lon 6.06906 lat 50.70401

[lon 6.00452 lat 50.64400 [ nom. scale = 1 / 25000 ]

pdfmap\_20241114\_162651\_Venrtrilogie\_6-12454\_50.5862\_247.pdf

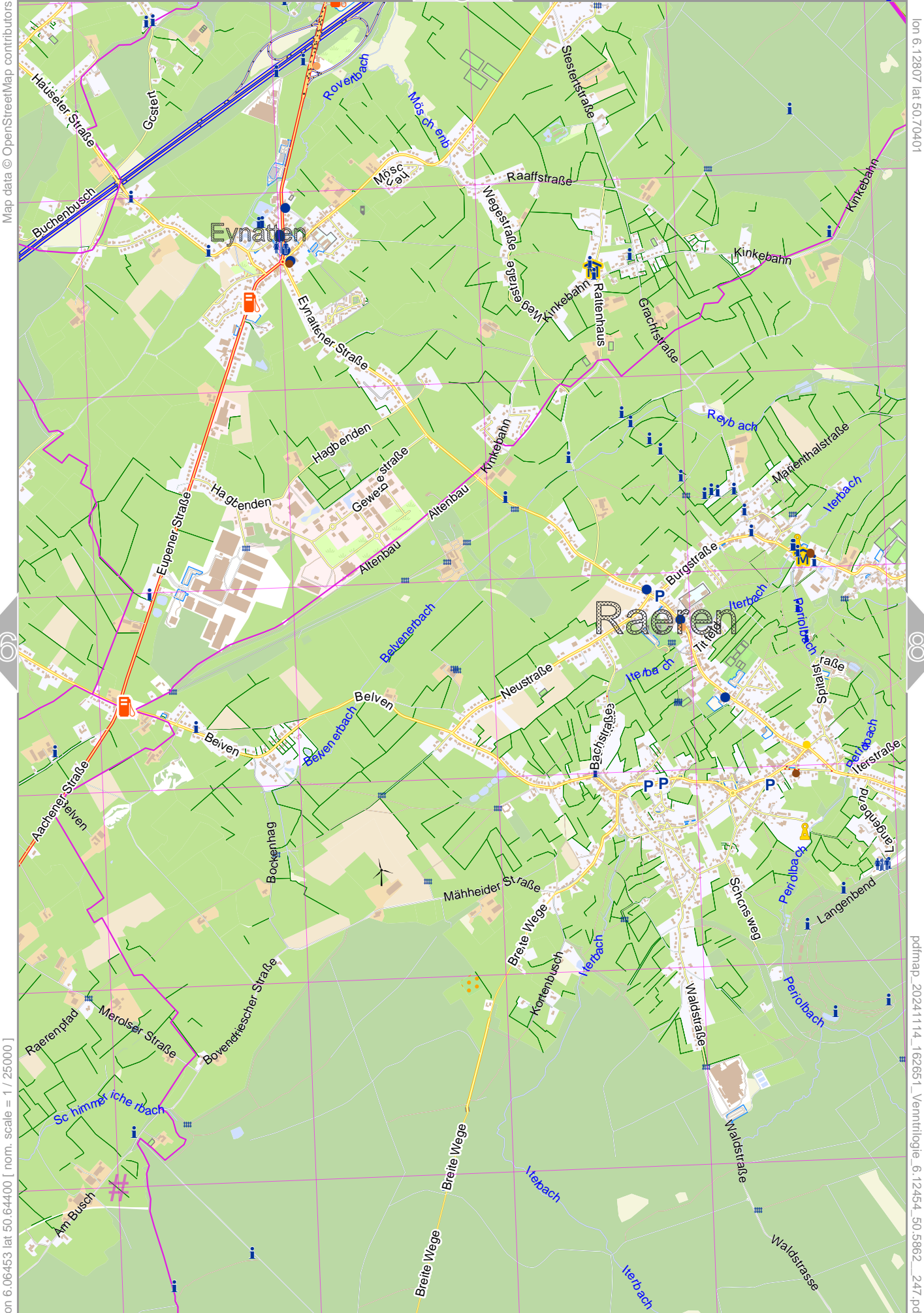
# UTM: 32 U easting 289.00 km northing 5615.00 km  
UTM-Grid-width = 1000m

10

# Ventrilogie

3

7



Map data © OpenStreetMap contributors

lon 6.12807 lat 50.70401

lon 6.06453 lat 50.64400 [ nom. scale = 1 / 25000 ]

pdfmap\_20241114\_162651\_Ventrilogie\_6.12454\_50.5862\_247.pdf

# UTM: 32 U easting 293.00 km northing 5615.00 km  
UTM-Grid-width = 1000m

11

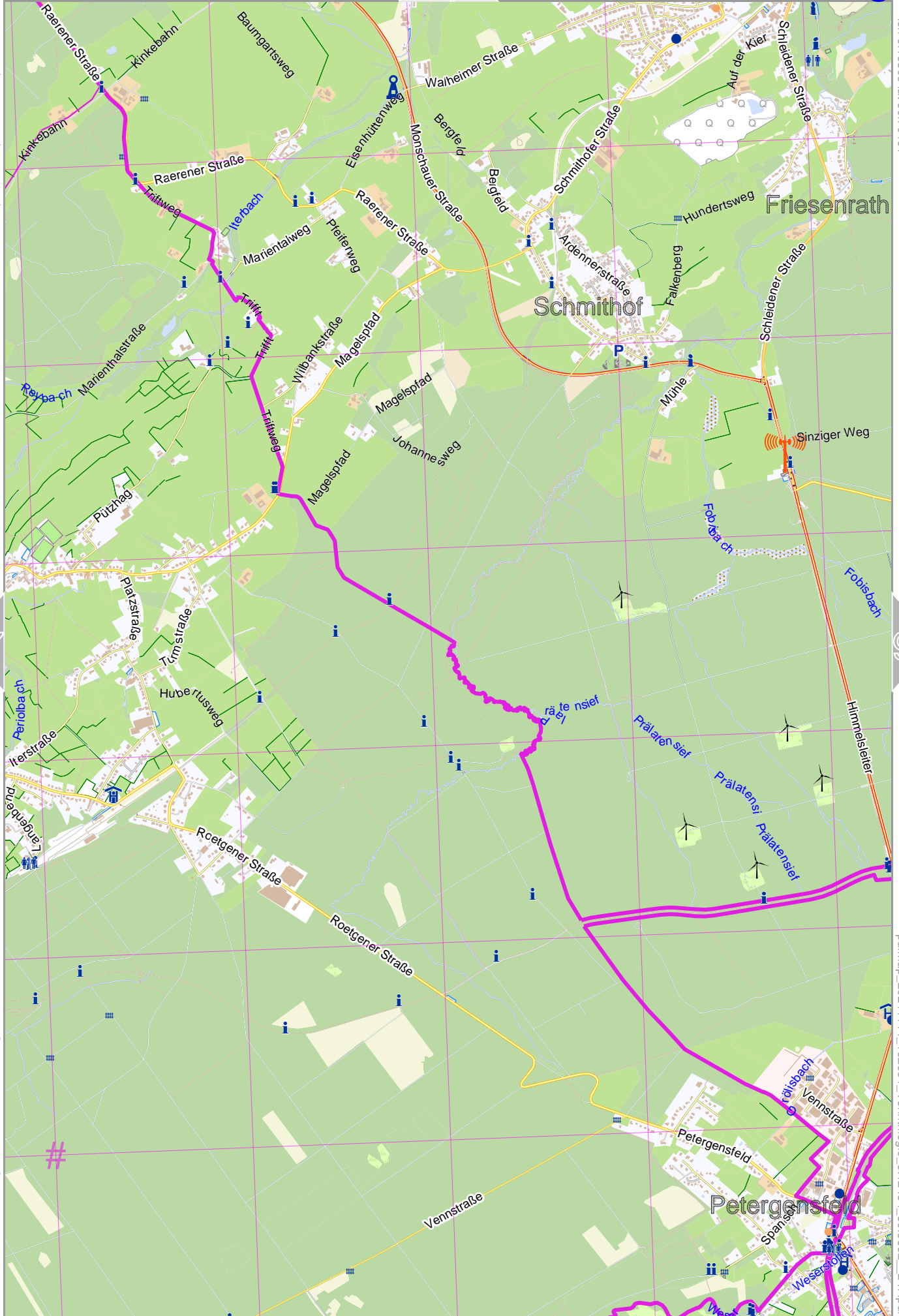
# Venrtrilogie

4

8

Map data © OpenStreetMap contributors

lon 6.18808 lat 50.70401



lon 6.12454 lat 50.64400 [ nom. scale = 1 / 25000 ]

pdfmap\_20241114\_162651\_Venrtrilogie\_6.12454\_50.5862\_247.pdf

# UTM: 32 U easting 297.00 km northing 5615.00 km  
UTM-Grid-width = 1000m

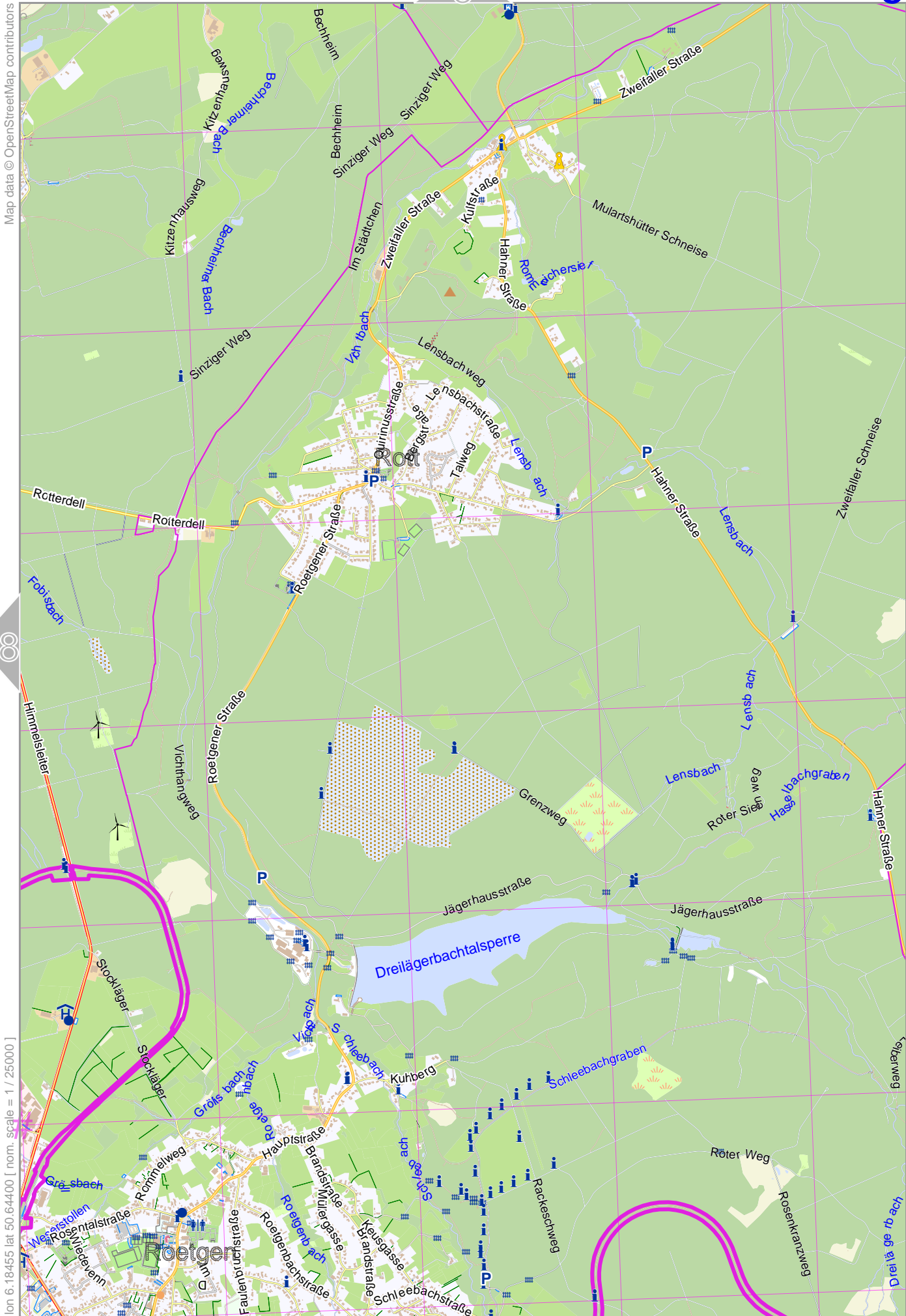
12



# Venrtrilogie

Map data © OpenStreetMap contributors

lon 6.24809 lat 50.70401

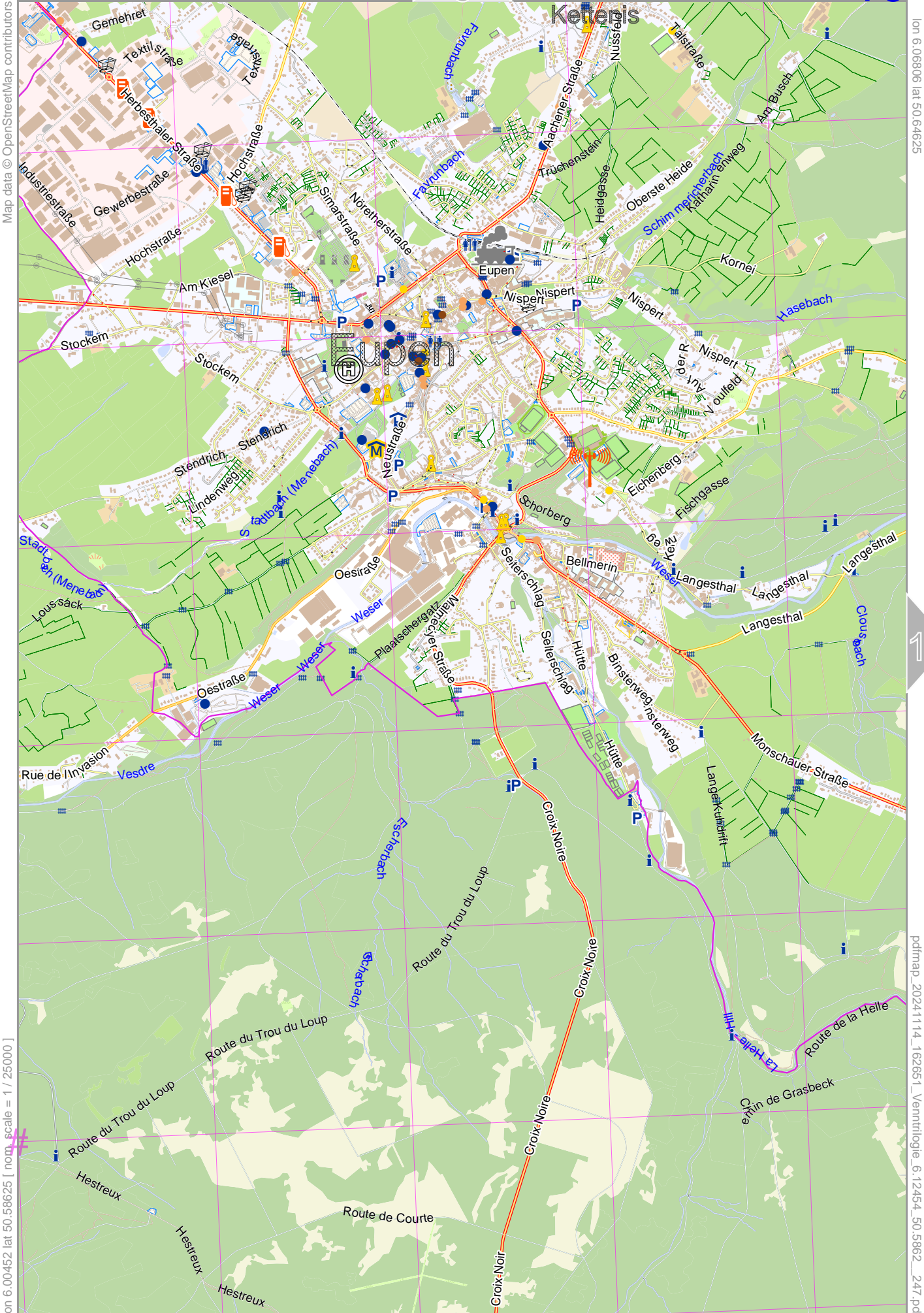


lon 6.18455 lat 50.64400 [ nom. scale = 1 / 250000 ]

pdfmap\_20241114\_162651\_Venrtrilogie\_6\_12454\_50\_5862\_247.pdf

# UTM: 32 U easting 301.00 km northing 5615.00 km  
UTM-Grid-width = 1000m

# Ventrilogie



Map data © OpenStreetMap contributors

lon 6.06806 lat 50.64625

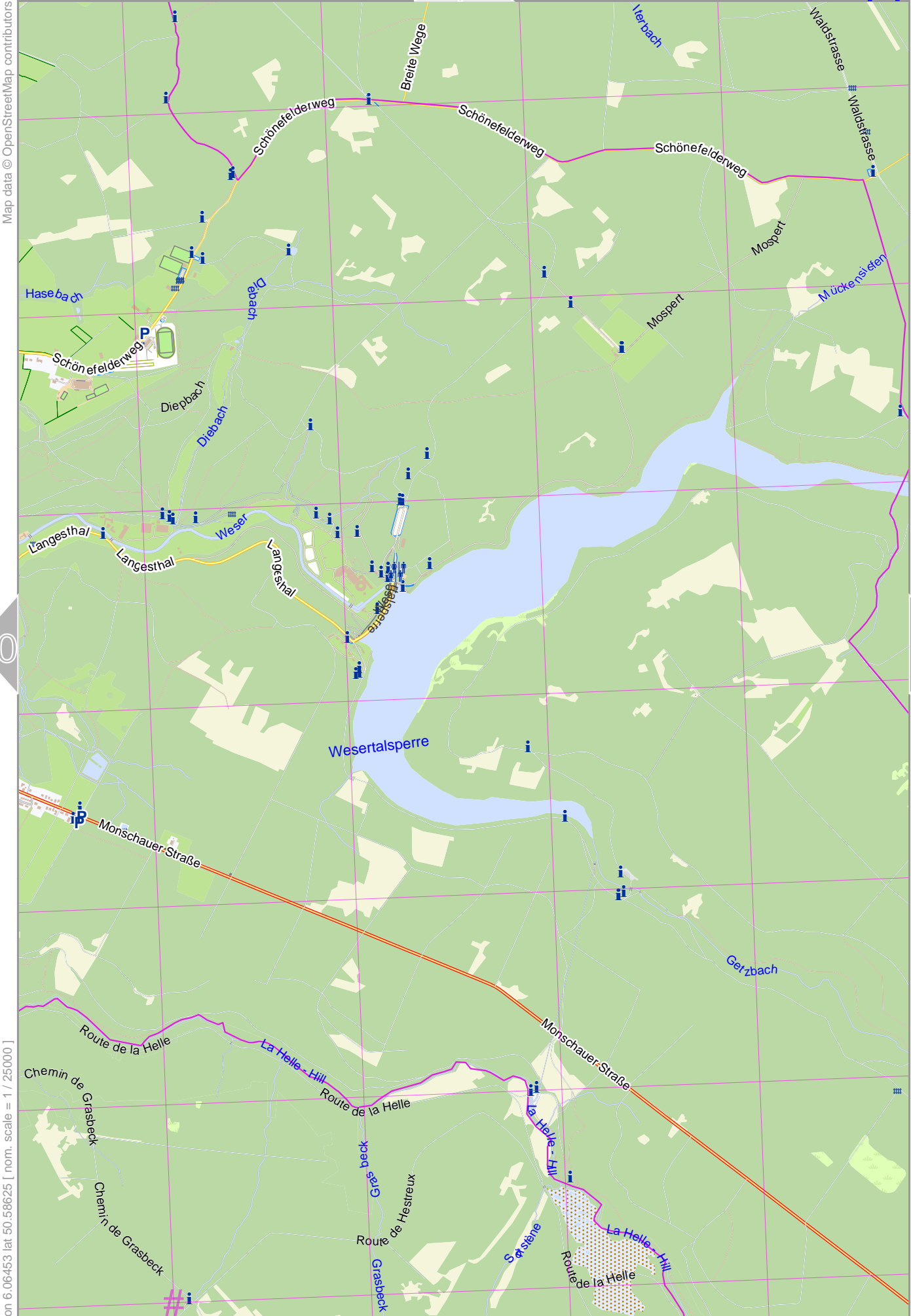
[ lon 6.00452 lat 50.58625 | nom. scale = 1 / 25000 ]

pdfmap\_20241114\_162651\_Ventrilogie\_6\_12454\_50.5862\_247.pdf

# UTM: 32 U easting 288.00 km northing 5609.00 km  
UTM-Grid-width = 1000m

# Venrtrilogie

11



Map data © OpenStreetMap contributors

lon 6.12807 lat 50.64625

10

12

[lon 6.06453 lat 50.58625 | nom. scale = 1 / 250000

pdfmap\_20241114\_162651\_Venrtrilogie\_6.12454\_50.5862\_247.pdf

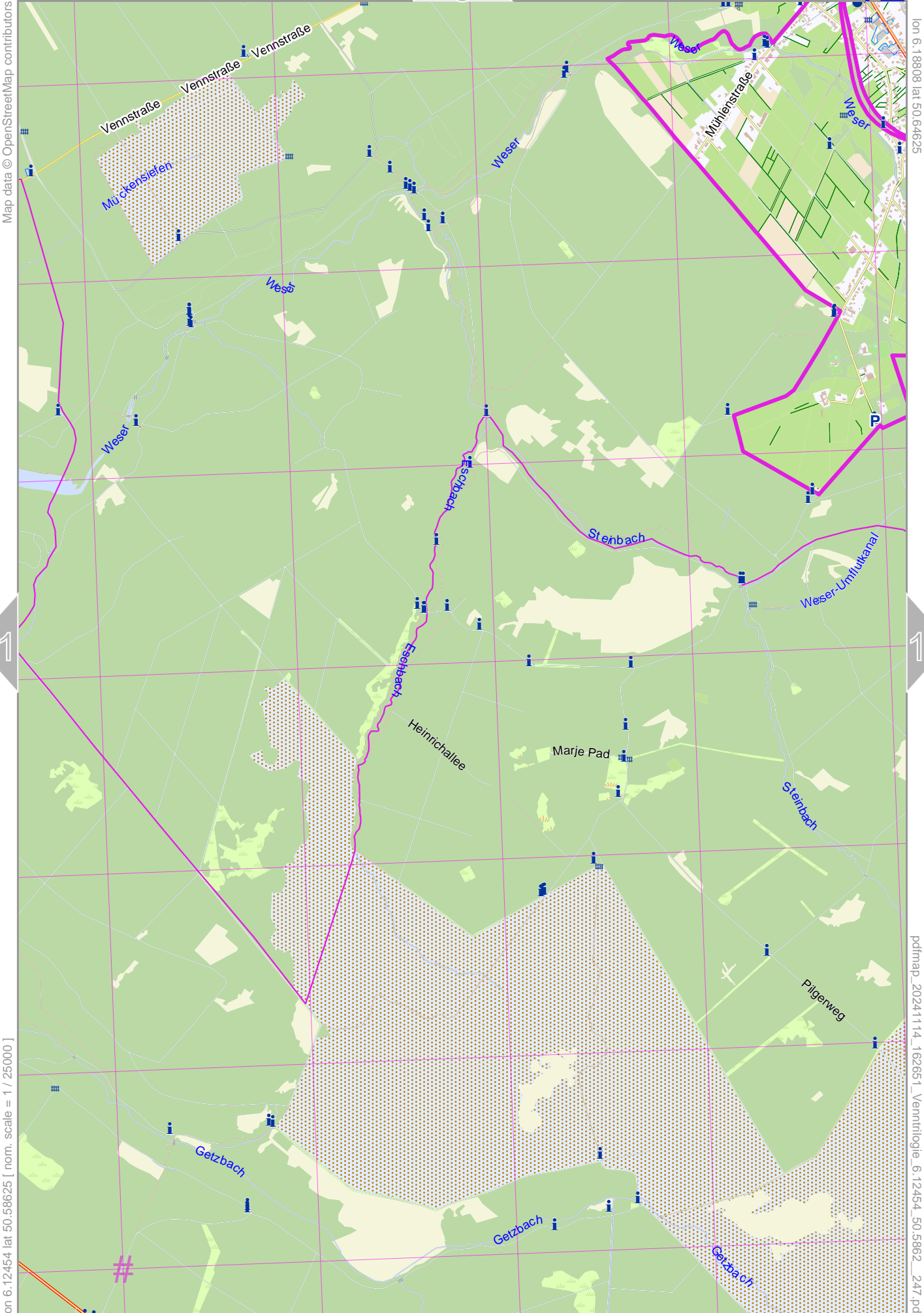
# UTM: 32 U easting 293.00 km northing 5608.00 km  
UTM-Grid-width = 1000m

15

# Venrtrilogie

12

8



Map data © OpenStreetMap contributors

lon 6.18808 lat 50.64625

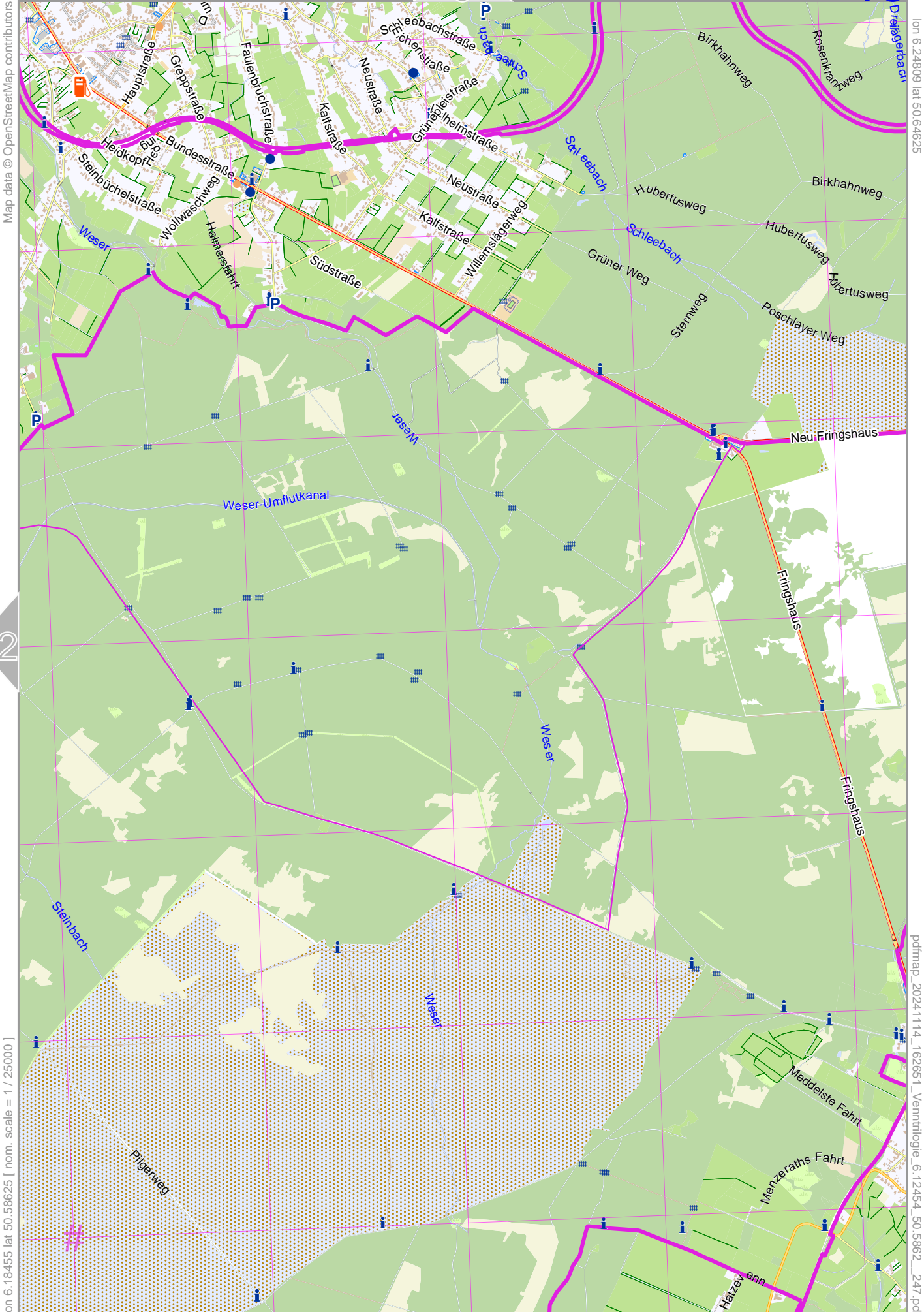
[ lon 6.12454 lat 50.58625 | nom. scale = 1 / 25000 ]

pdfmap\_20241114\_162651\_Venrtrilogie\_6.12454\_50.5862\_247.pdf

# UTM: 32 U easting 297.00 km northing 5608.00 km  
UTM-Grid-width = 1000m

16

# Venrtrilogie



Map data © OpenStreetMap contributors

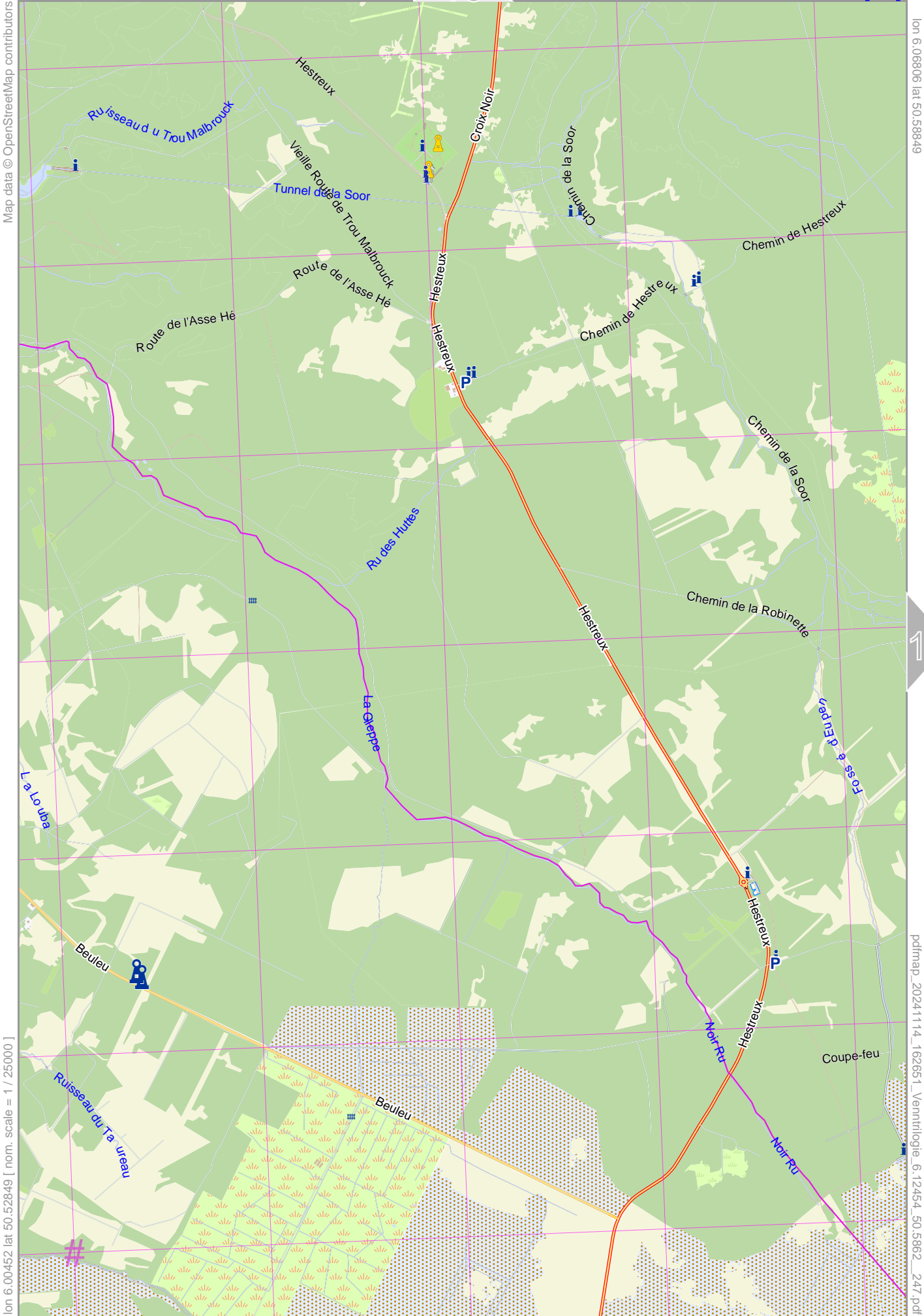
lon 6.24809 lat 50.64625

lon 6.18455 lat 50.58625 [ nom. scale = 1 / 25000 ]

pdfmap\_20241114\_162651\_Venrtrilogie\_6.12454\_50.5862\_247.pdf

# UTM: 32 U easting 301.00 km northing 5608.00 km  
UTM-Grid-width = 1000m

# Ventrilogie



Map data © OpenStreetMap contributors

lon 6.06806 lat 50.58949

[ lon 6.00452 lat 50.52849 | nom. scale = 1 / 25000 ]

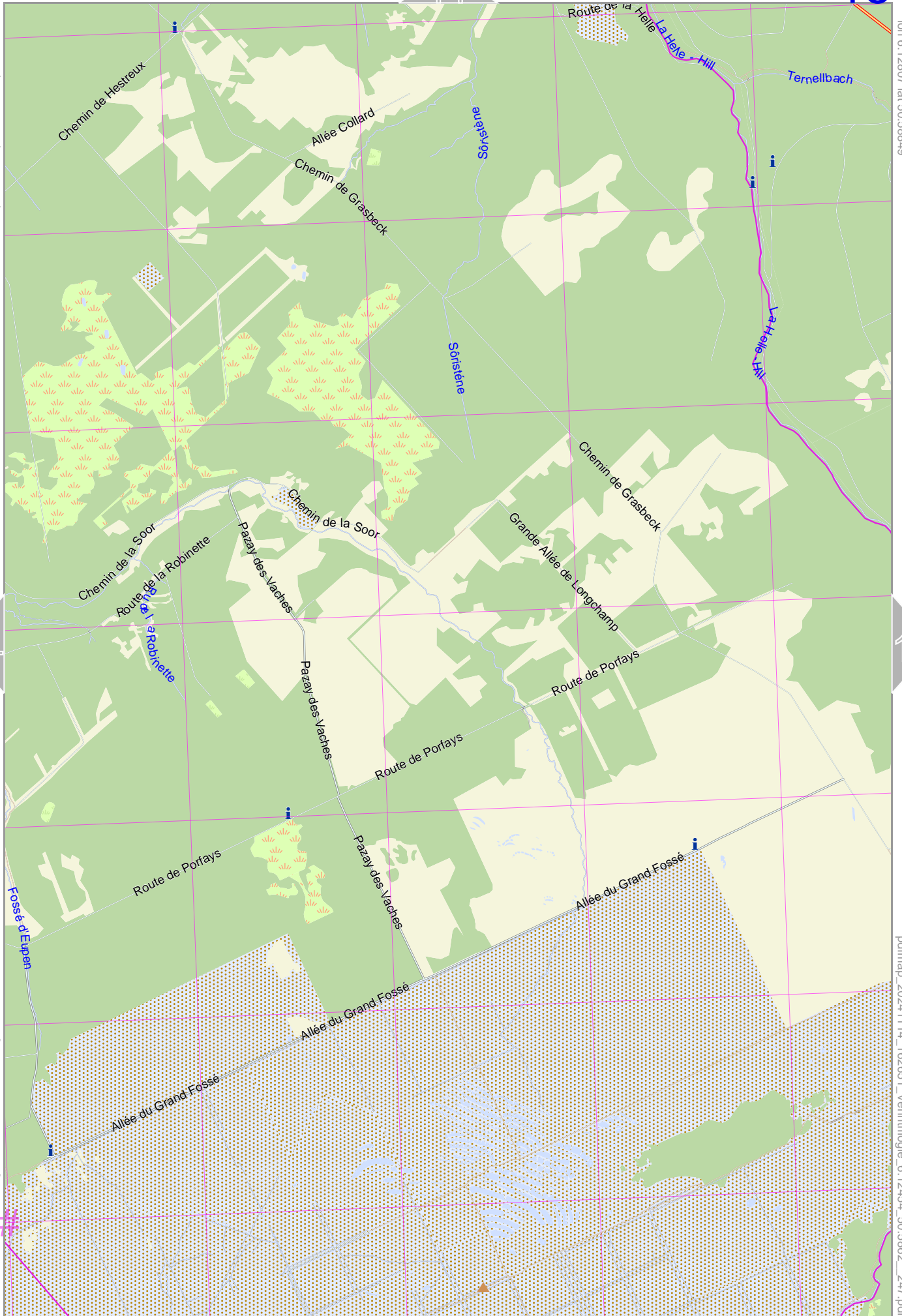
pdfmap\_20241114\_162651\_Ventrilogie\_6\_12454\_50\_5862\_247.pdf

# UTM: 32 U easting 288.00 km northing 5602.00 km  
UTM-Grid-width = 1000m

# Venrtrilogie

Map data © OpenStreetMap contributors

lon 6.12807 lat 50.58949



14

16

[lon 6.06453 lat 50.52849 | nom. scale = 1 / 250000 ]

pdfmap\_20241114\_162651\_Venrtrilogie\_6\_12454\_50\_5862\_247.pdf

# UTM: 32 U easting 292.00 km northing 5602.00 km  
UTM-Grid-width = 1000m

19

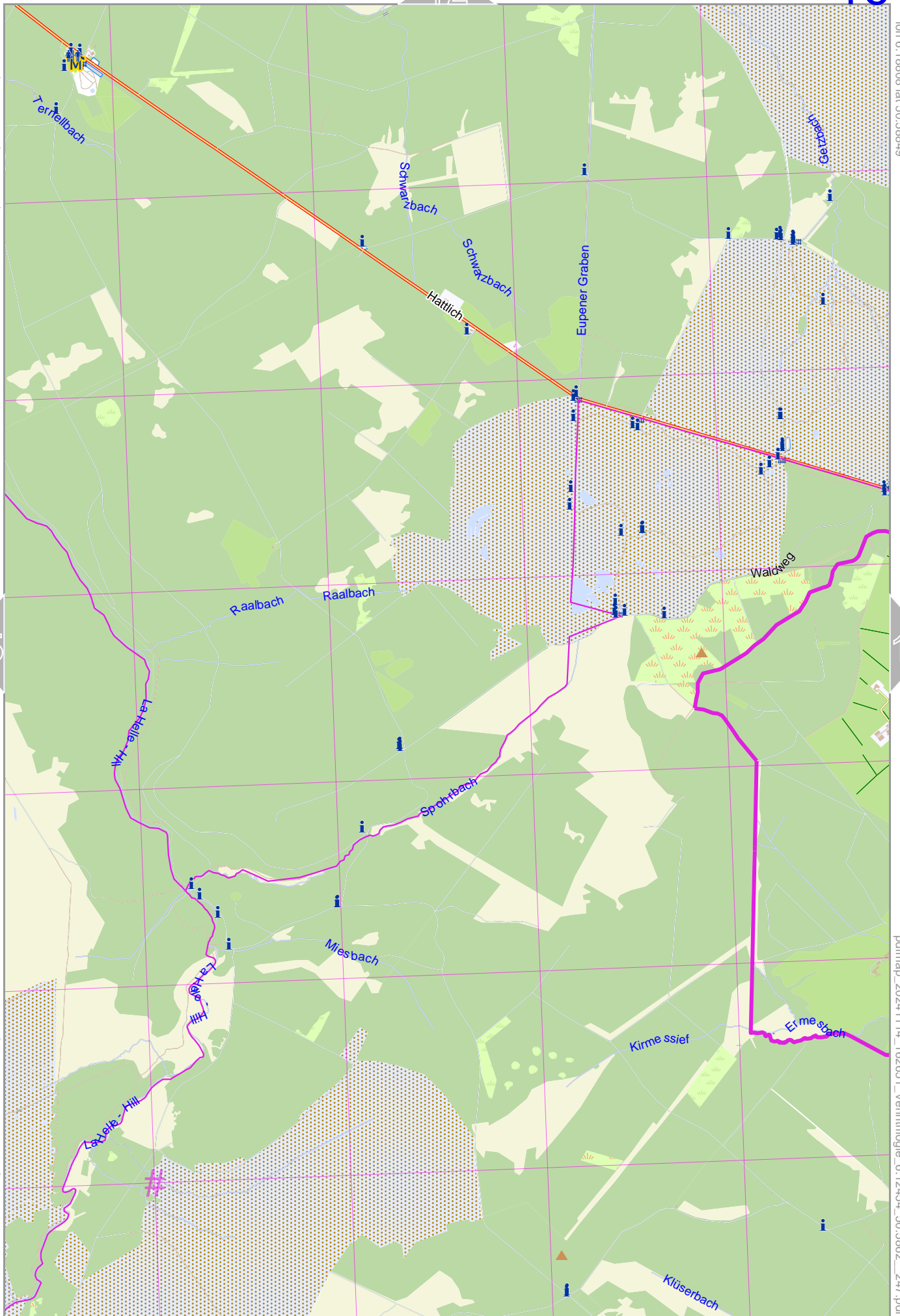
# Venrtrilogie

12

16

Map data © OpenStreetMap contributors

lon 6.18808 lat 50.58849



15

17

[lon 6.12454 lat 50.52849 | nom. scale = 1 / 250000 ]

pdfmap\_20241114\_162651\_Venrtrilogie\_6.12454\_50.58862\_247.pdf

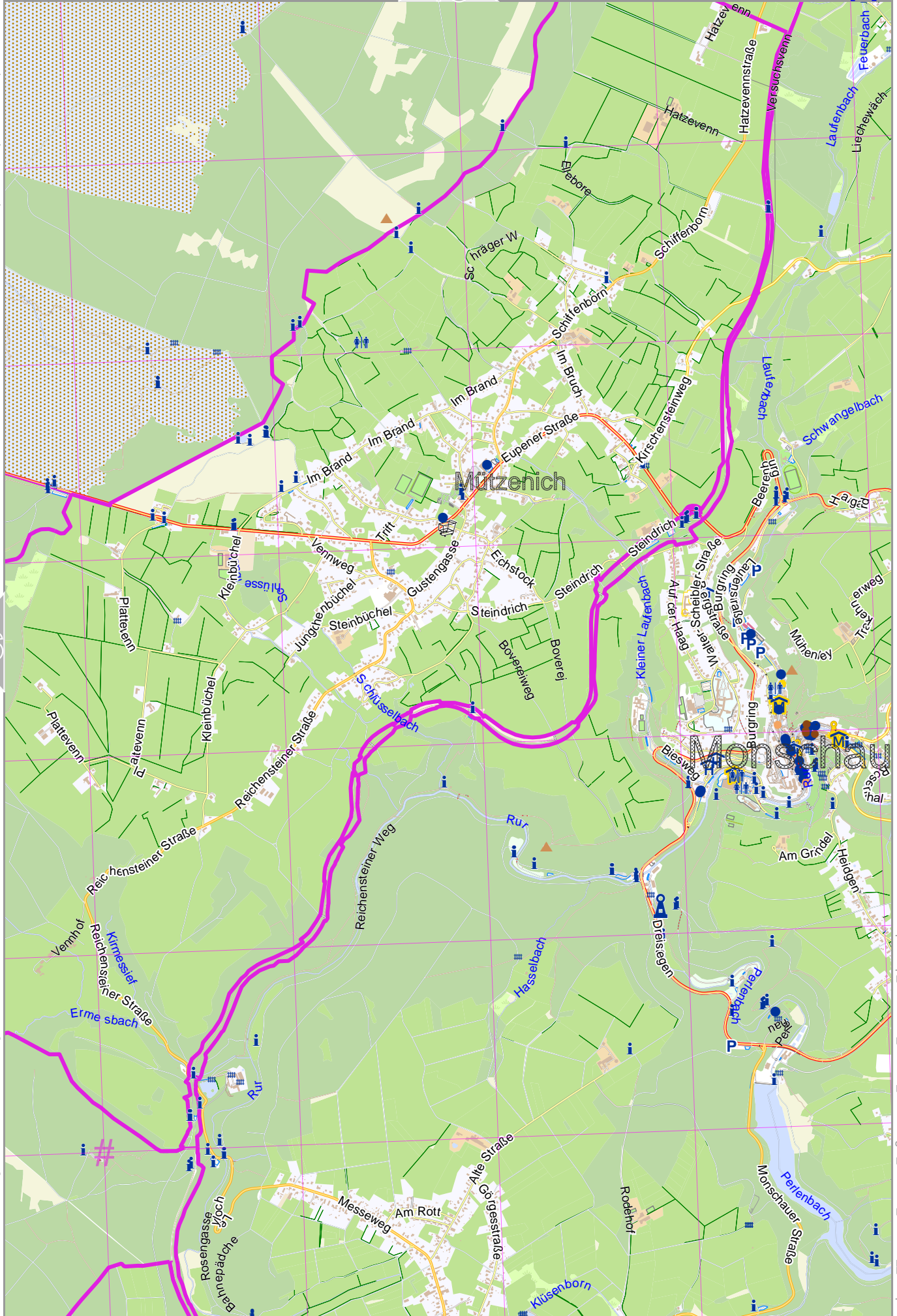
# UTM: 32 U easting 297.00 km northing 5602.00 km  
UTM-Grid-width = 1000m

20



Map data © OpenStreetMap contributors

lon 6.24809 lat 50.58849



lon 6.18455 lat 50.52849 [ nom. scale = 1 / 250000 ]

pdfmap\_20241114\_162651\_Venrtrilogie\_6-12454\_50.5882\_247.pdf

# UTM: 32 U easting 301.00 km northing 5602.00 km  
UTM-Grid-width = 1000m

# Venrtrilogie

14

18

Map data © OpenStreetMap contributors

lon 6.06806 lat 50.53074

[ lon 6.00452 lat 50.47073 | nom. scale = 1 / 25000 ]

pdfmap\_20241114\_162651\_Venrtrilogie\_6\_12454\_50\_5862\_247.pdf

19

Route de Xhofraix  
 Le Targnon  
 Route de l'Ancienne Douane  
 Le Targnon

Hoeune

La Statte  
 Ruisseau de Wyllions  
 Passage de Winonfagne

Chemin de Nou Gotte

La Statte  
 La Statte

La Vécquée

Ruisseau de la Baraque

Folleur

Ancien Chemin de Malmedy à Eupen

Trôs Mareis  
 Route de la Baraque Michel

Bayenon

# UTM: 32 U easting 288.00 km northing 5596.00 km  
 UTM-Grid-width = 1000m

22

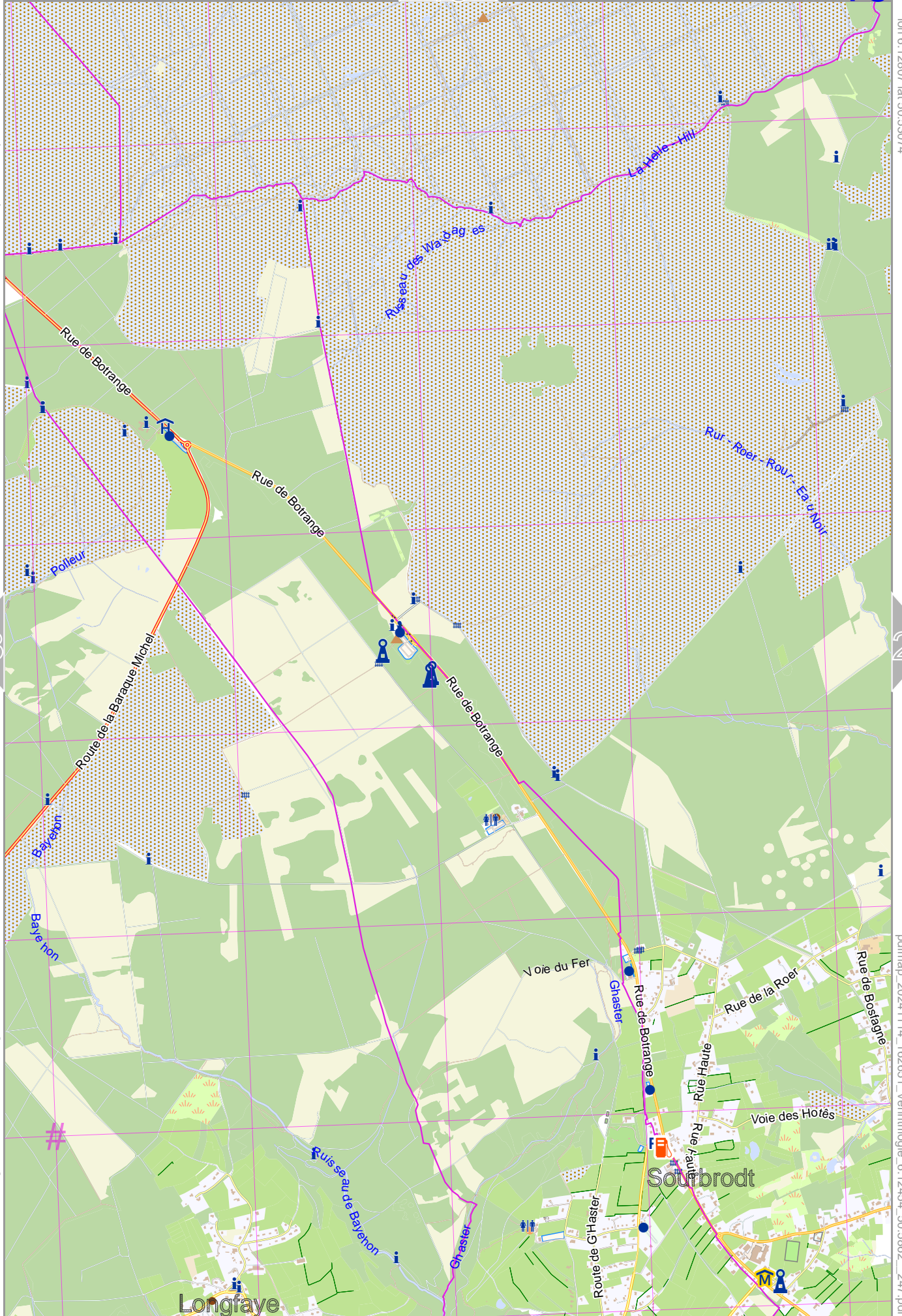
# Ventrilogie

15

19

Map data © OpenStreetMap contributors

lon 6.12807 lat 50.53074



18

20

[ lon 6.06453 lat 50.47073 | nom. scale = 1 / 25000 ]

pdfmap\_20241114\_162651\_Ventrilogie\_6.12454\_50.5862\_247.pdf

Longfaye

Soubrodt

# UTM: 32 U easting 292.00 km northing 5596.00 km  
UTM-Grid-width = 1000m

23

Map data © OpenStreetMap contributors

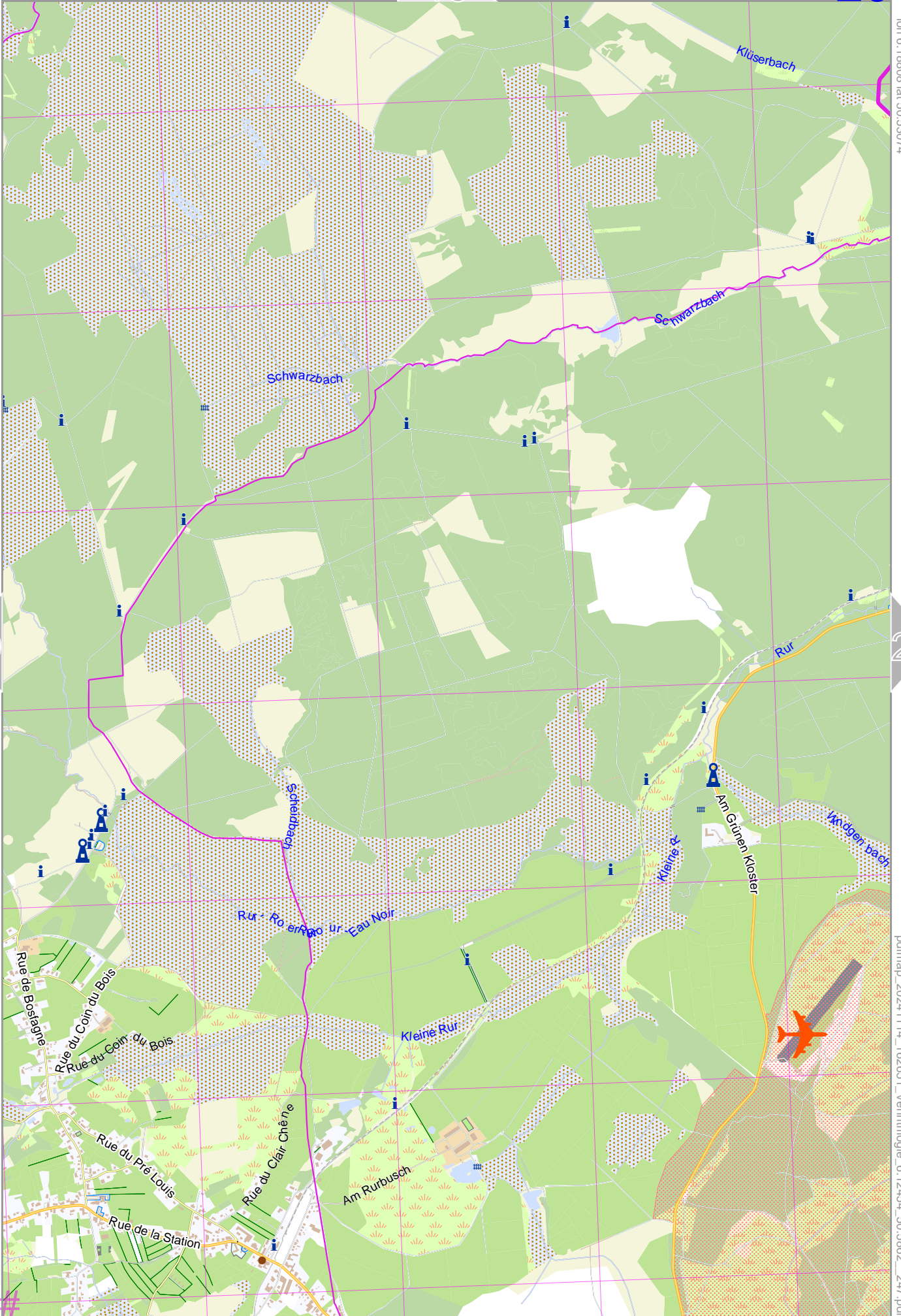
lon 6.18808 lat 50.53074

19

21

lon 6.12454 lat 50.47073 | nom. scale = 1 / 250000

pdfmap\_20241114\_162651\_Venrtrilogie\_6.12454\_50.53862\_247.pdf

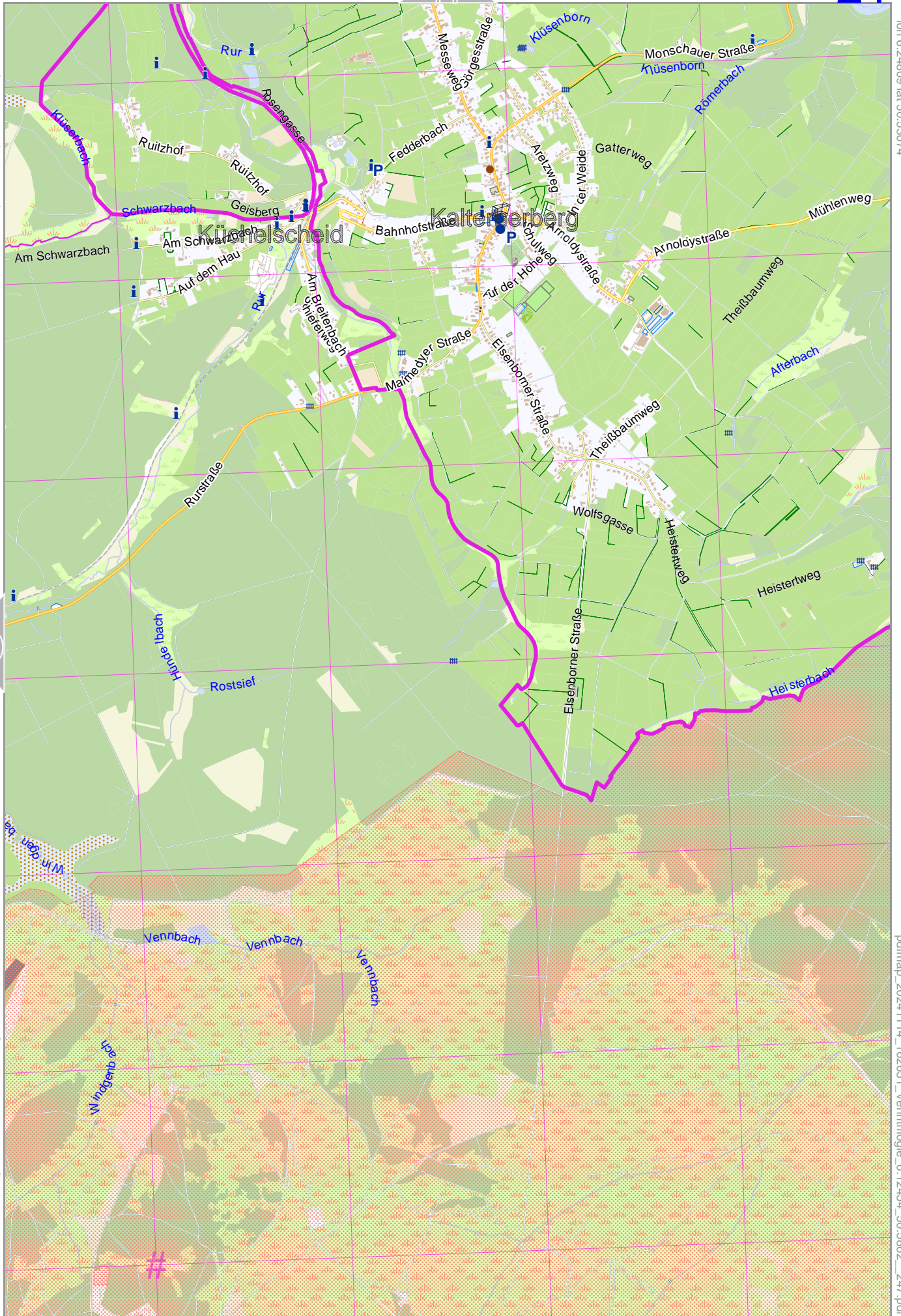


# UTM: 32 U easting 296.00 km northing 5595.00 km  
UTM-Grid-width = 1000m

# Venrtrilogie

Map data © OpenStreetMap contributors

lon 6.24809 lat 50.53074



[lon 6.18455 lat 50.47073 [ nom. scale = 1 / 250000 ]

pdfmap\_20241114\_162651\_Venrtrilogie\_6.12454\_50.5862\_247.pdf

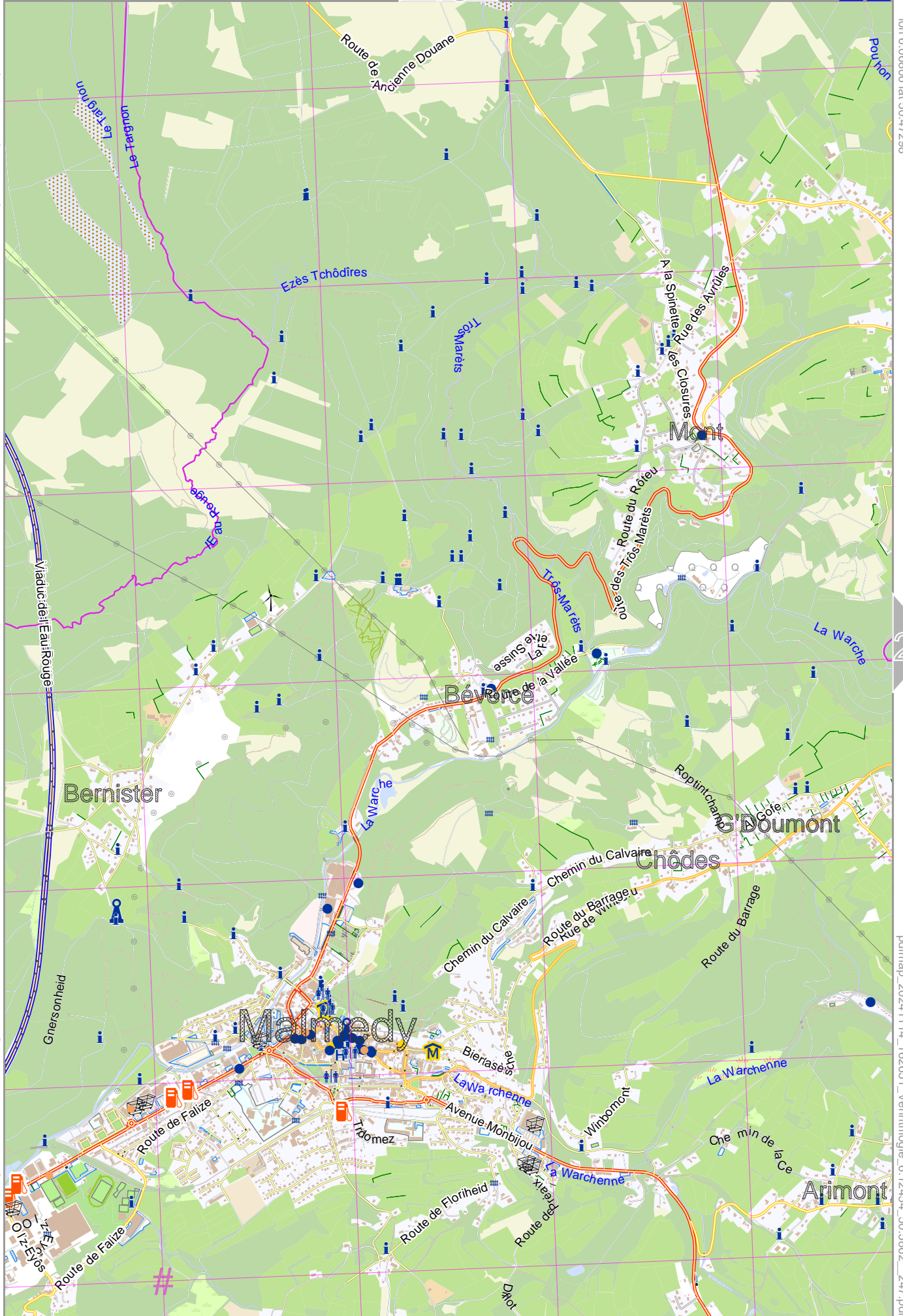
# UTM: 32 U easting 301.00 km northing 5595.00 km  
UTM-Grid-width = 1000m

Map data © OpenStreetMap contributors

lon 6.06906 lat 50.47298

[lon 6.00452 lat 50.41297 | nom. scale = 1 / 250000]

pdfmap\_20241114\_162651\_Ventrilogie\_6\_12454\_50\_5862\_247.pdf

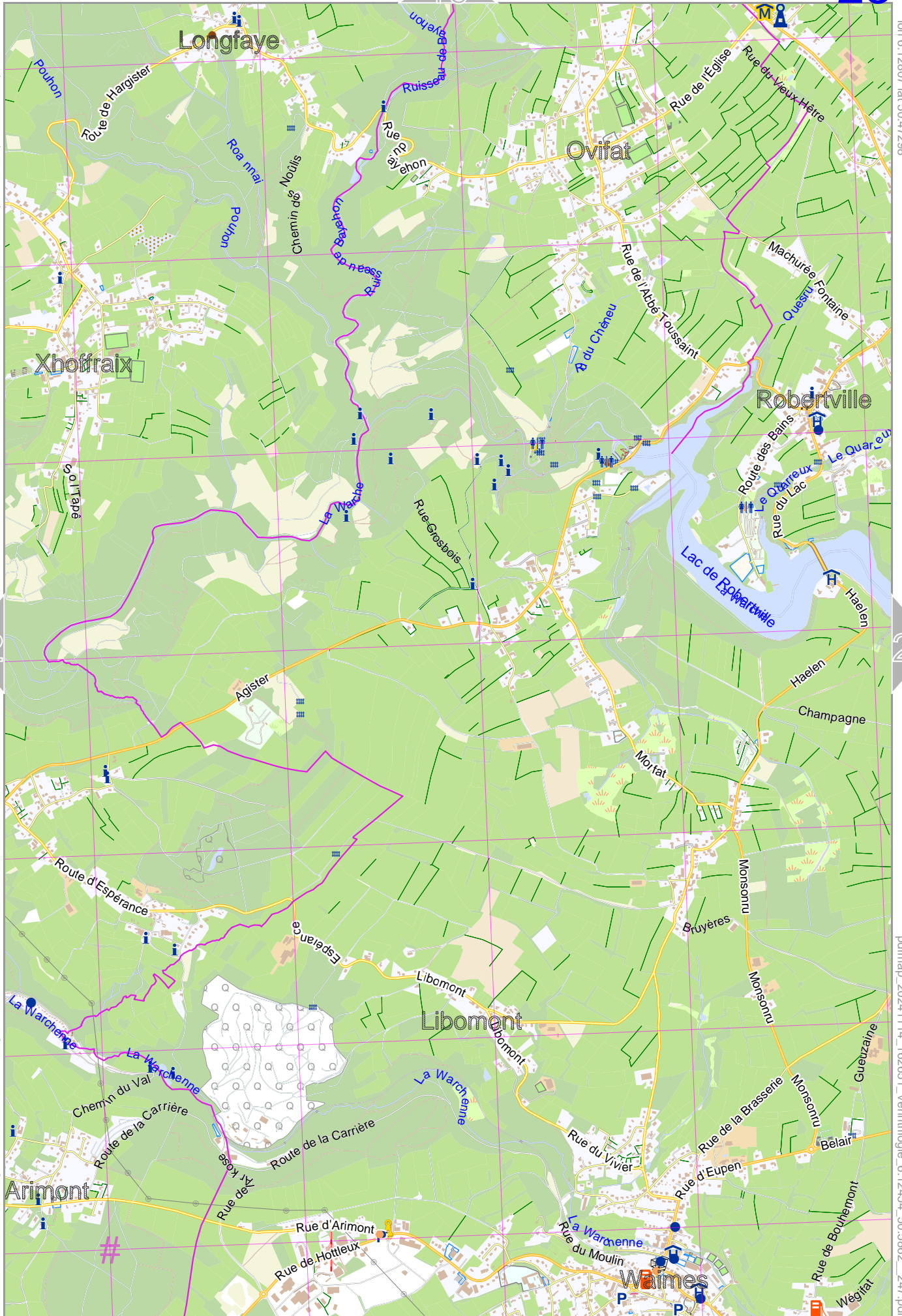


Map data © OpenStreetMap contributors

lon 6.12807 lat 50.47298

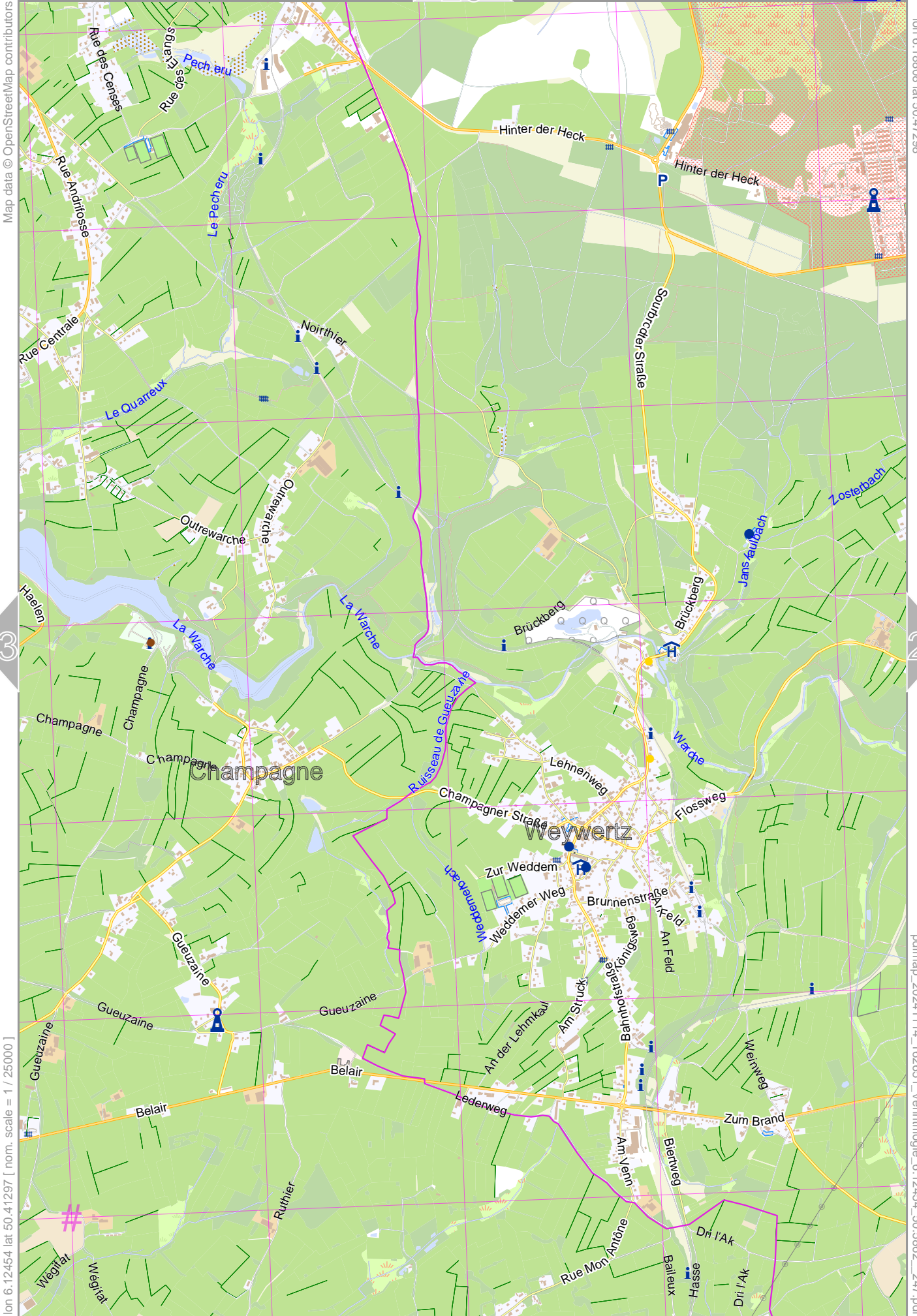
[ lon 6.06453 lat 50.41297 | nom. scale = 1 / 250000 ]

pdfmap\_20241114\_162651\_Venrtrilogie\_6\_12454\_50\_5862\_247.pdf



# UTM: 32 U easting 292.00 km northing 5589.00 km  
UTM-Grid-width = 1000m

# Venrtrilogie



Map data © OpenStreetMap contributors

lon 6.18808 lat 50.47298

23

25

[ lon 6.12454 lat 50.41297 | nom. scale = 1 / 250000 ]

pdfmap\_20241114\_162651\_Venrtrilogie\_6.12454\_50.5862\_247.pdf

# UTM: 32 U easting 296.00 km northing 5589.00 km  
UTM-Grid-width = 1000m



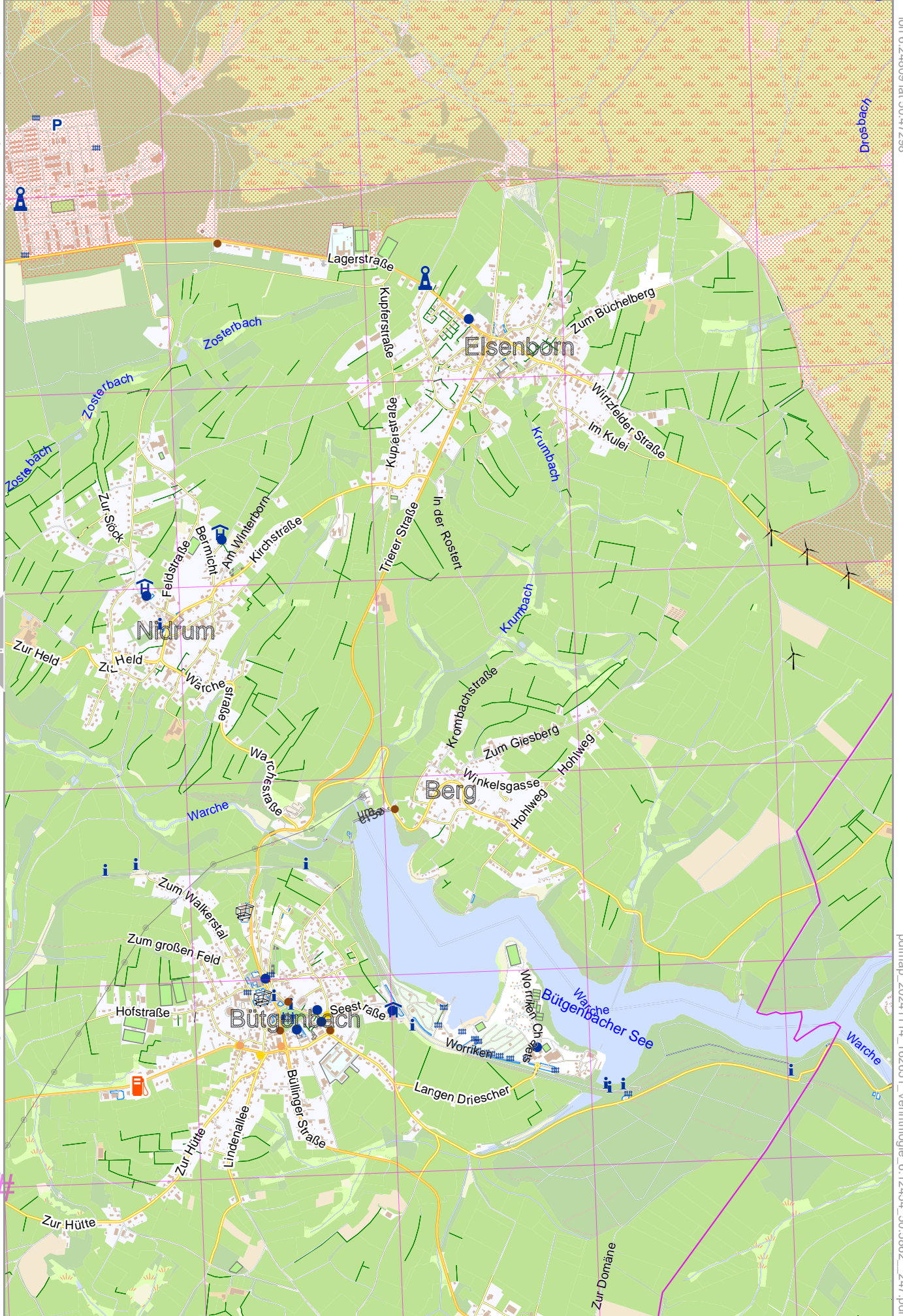
Map data © OpenStreetMap contributors

lon 6.24809 lat 50.47298

24

[ nom. scale = 1 / 25000 ] lon 6.18455 lat 50.41297

pdfmap\_20241114\_162651\_Venrtrilogie\_6\_12454\_50\_5862\_247.pdf



# UTM: 32 U easting 300.00 km northing 5589.00 km  
 UTM-Grid-width = 1000m