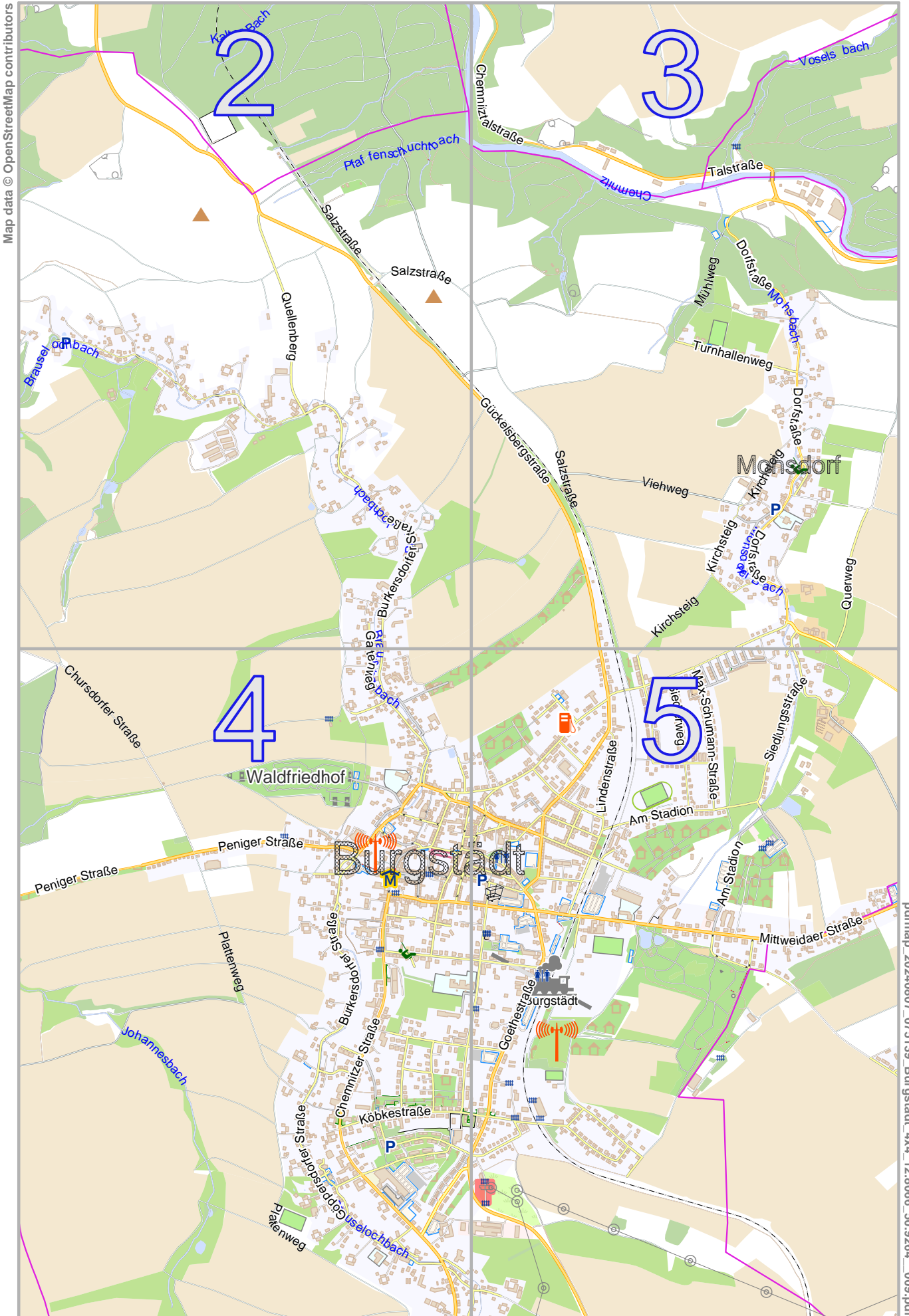
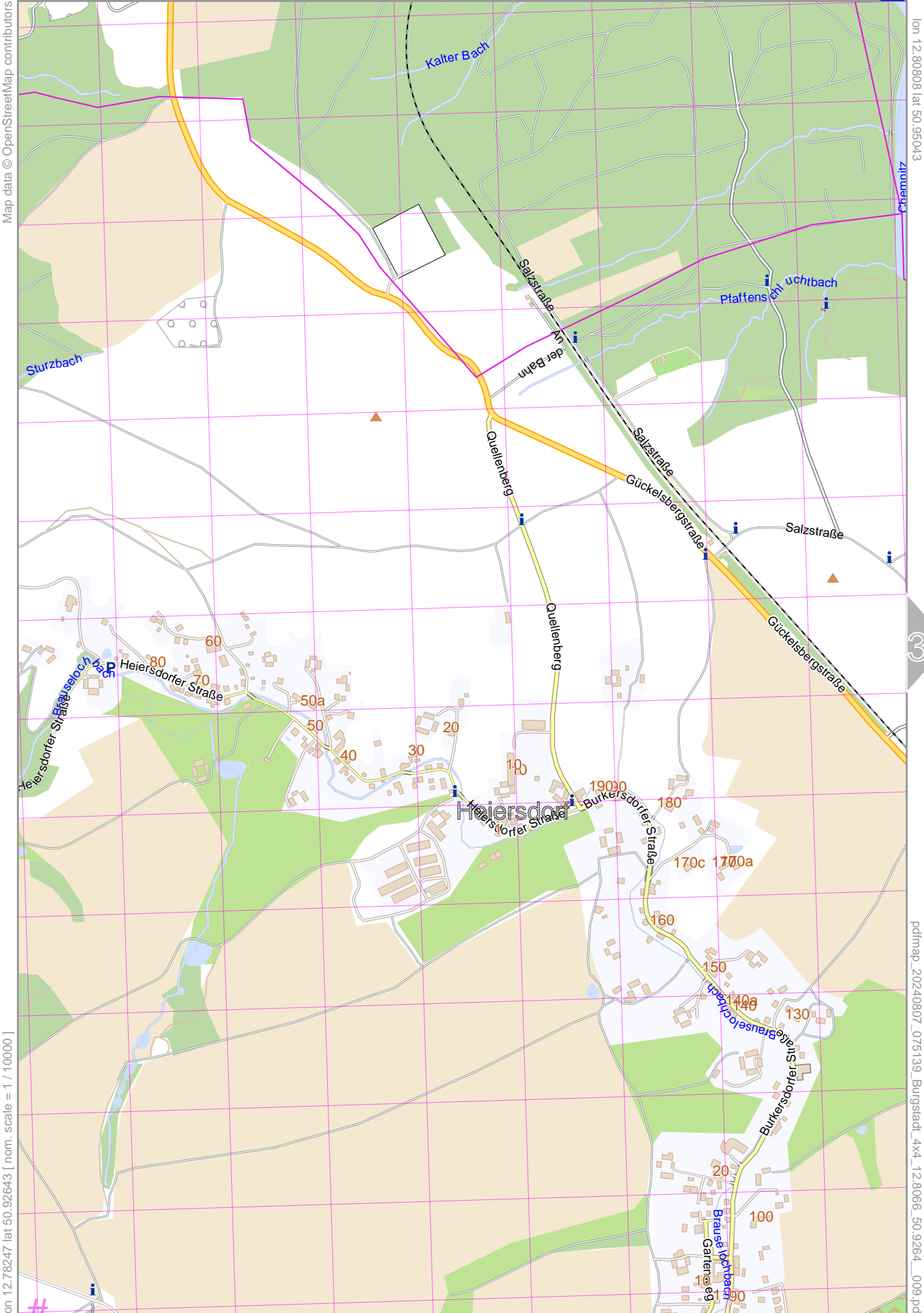


Burgstädt 4x4

lon 12.83225 lat 50.95043



lon 12.78247 lat 50.90333
[nom. scale = 1 / 20000]



Map data © OpenStreetMap contributors

lon 12.80608 lat 50.92643

lon 12.78247 lat 50.92643 [nom. scale = 1 / 100000]

pdfmap_20240807_075139_Burgstädt_4x4_12.8066_50.9264_009.pdf

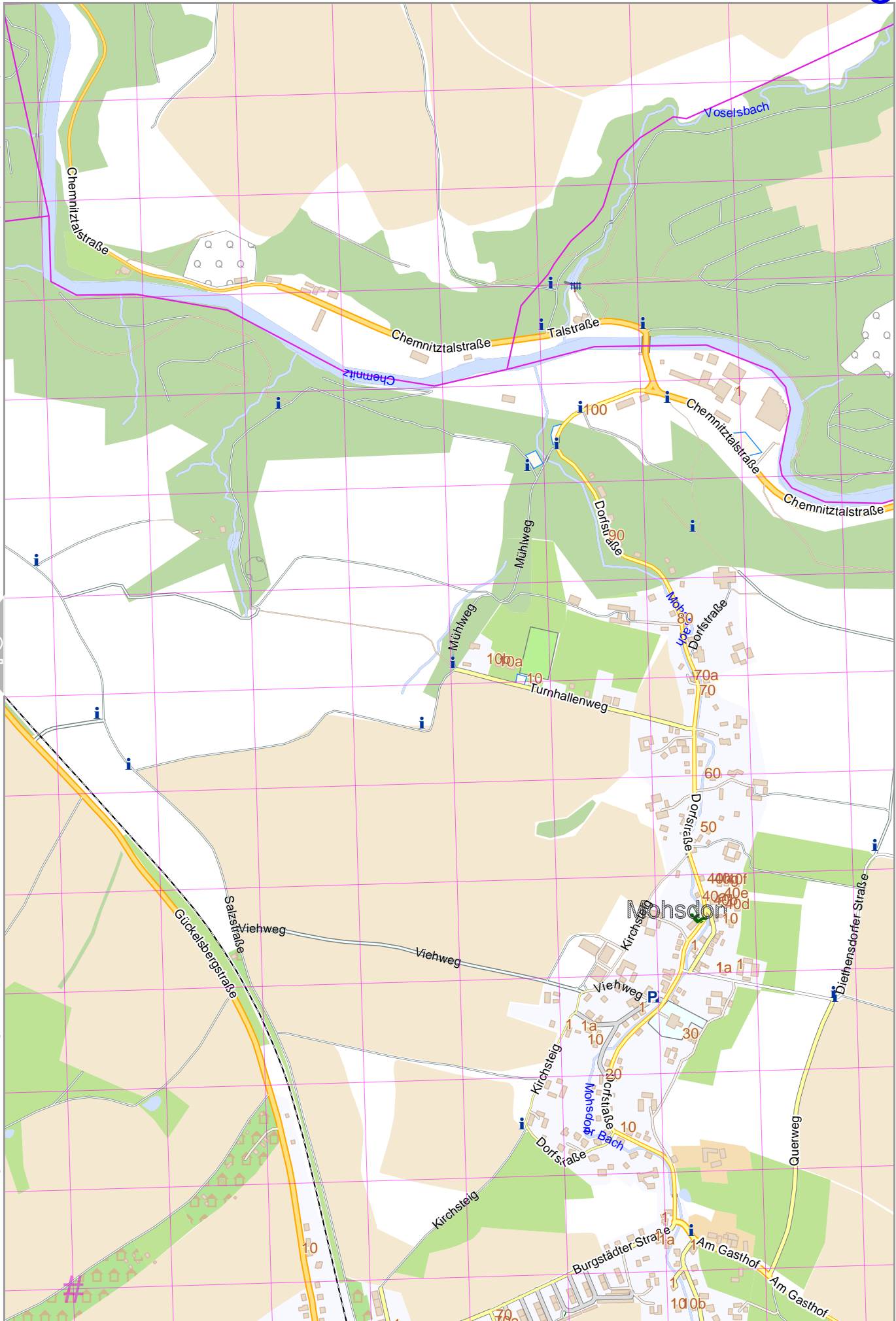
UTM: 33 U easting 344.20 km northing 5644.00 km
UTM-Grid-width = 200m



Burgstädt 4x4

Map data © OpenStreetMap contributors

lon 12.83225 lat 50.95043



2

[lon 12.80665 lat 50.92643 [nom. scale = 1 / 10000]

pdfmap_20240807_075139_Burgstädt_4x4_12.8066_50.9264_009.pdf

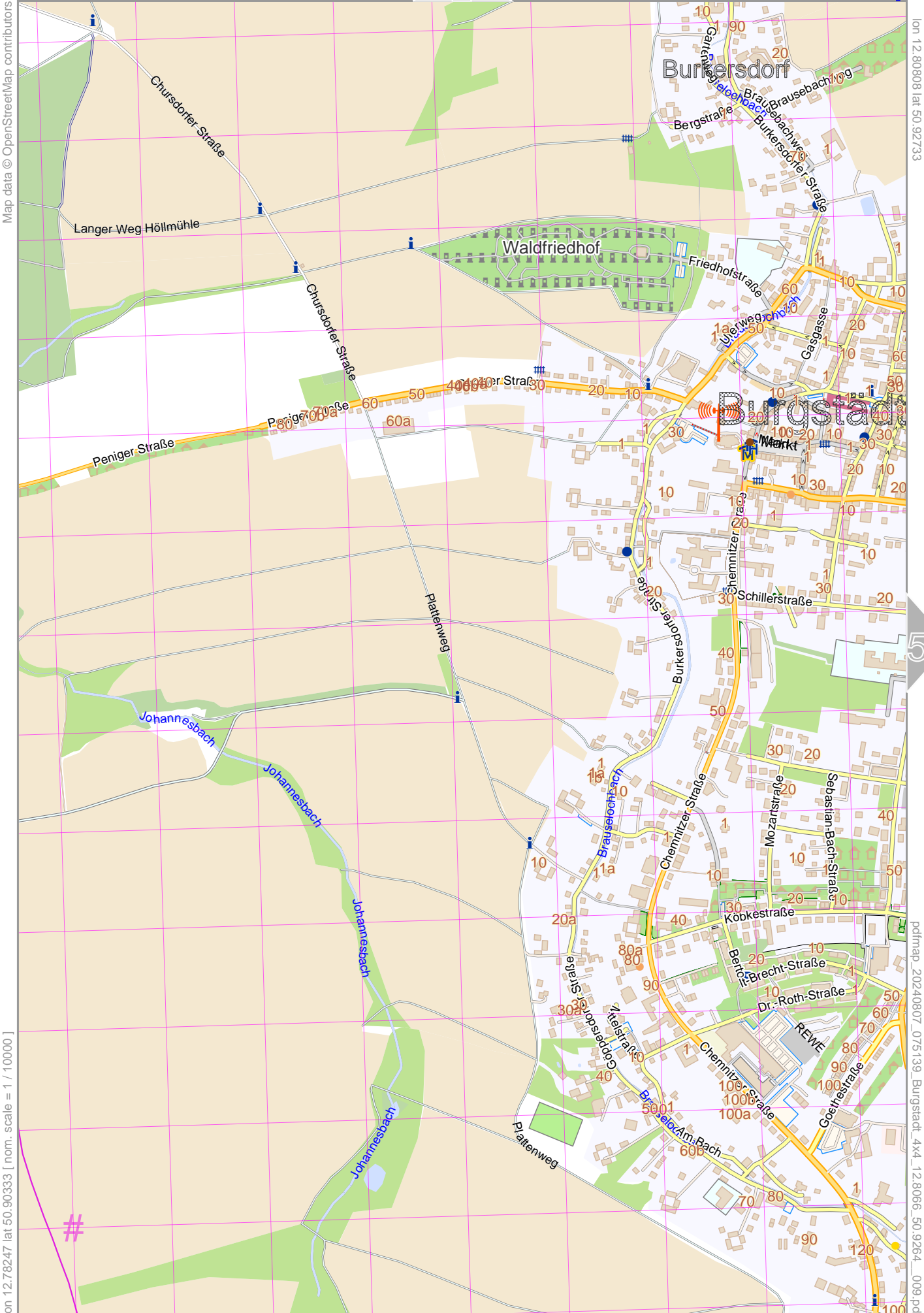
UTM: 33 U easting 346.00 km northing 5644.00 km
UTM-Grid-width = 200m

5

Burgstädt 4x4

2

4



Map data © OpenStreetMap contributors

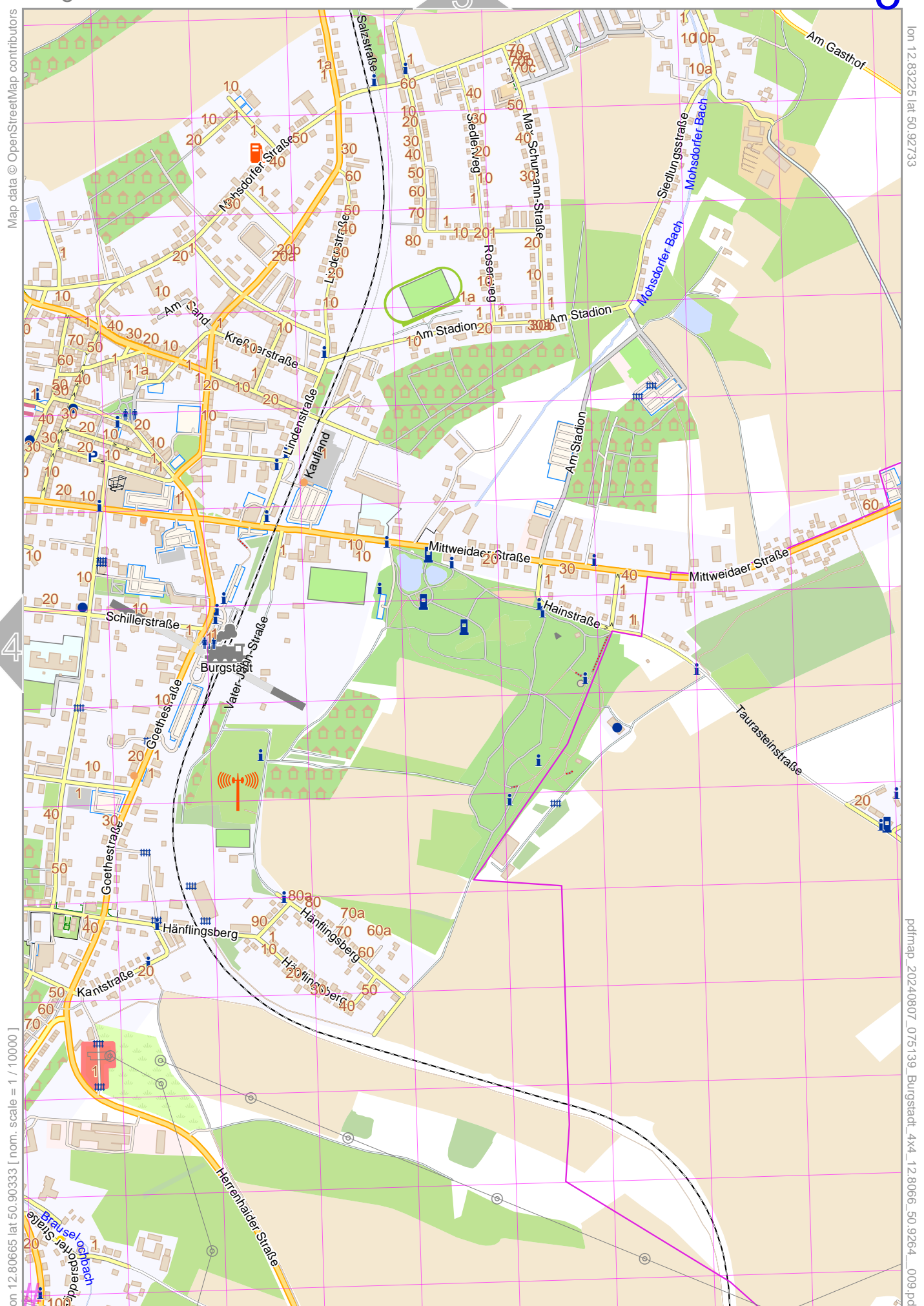
lon 12.80808 lat 50.92733

lon 12.78247 lat 50.90333 [nom. scale = 1 / 100000]

pdfmap_20240807_075139_Burgstädt_4x4_128086_50.9264_009.pdf

UTM: 33 U easting 344.20 km northing 5641.60 km
UTM-Grid-width = 200m

Burgstädt 4x4



Map data © OpenStreetMap contributors

lon 12.83225 lat 50.92733

[lon 12.80665 lat 50.90333 [nom. scale = 1 / 100000

pdfmap_20240807_075139_Burgstadt_4x4_12.8066_50.9264_009.pdf

UTM: 33 U easting 345.80 km northing 5641.40 km
UTM-Grid-width = 200m