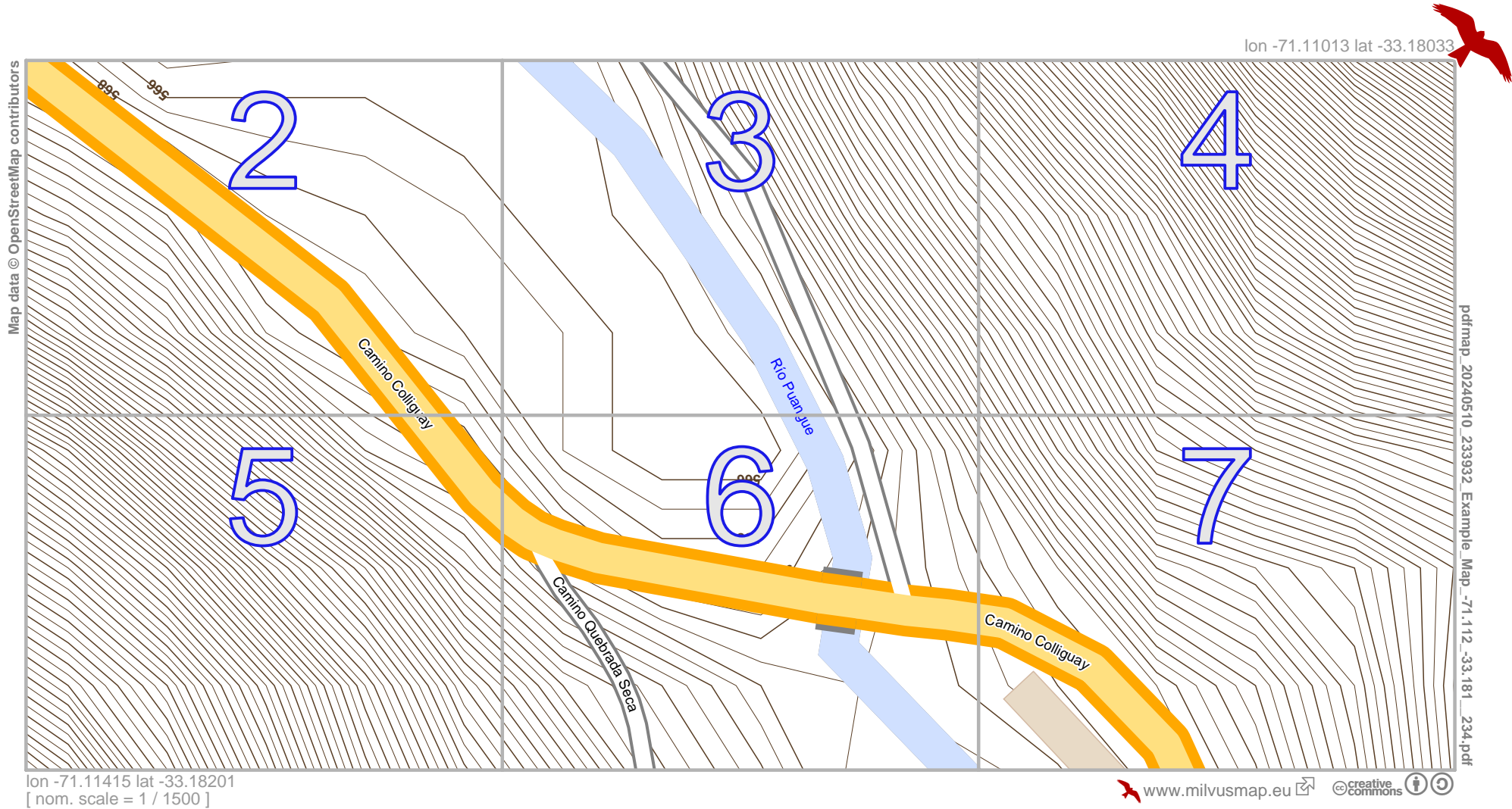


Example_Map





Map data © OpenStreetMap contributors

lon -71.11415 lat -33.18117 [nom. scale = 1 / 500]

lon -71.11281 lat -33.18033

pdfmap_20240510_233932_Example_Map_-71.112_-33.181_234.pdf

Camino Colliguay

#

UTM: 19 H easting 302.90 km northing 6326.64 km
UTM-Grid-width = 20m
Contour interval = 1m

5



www.milvusmap.eu



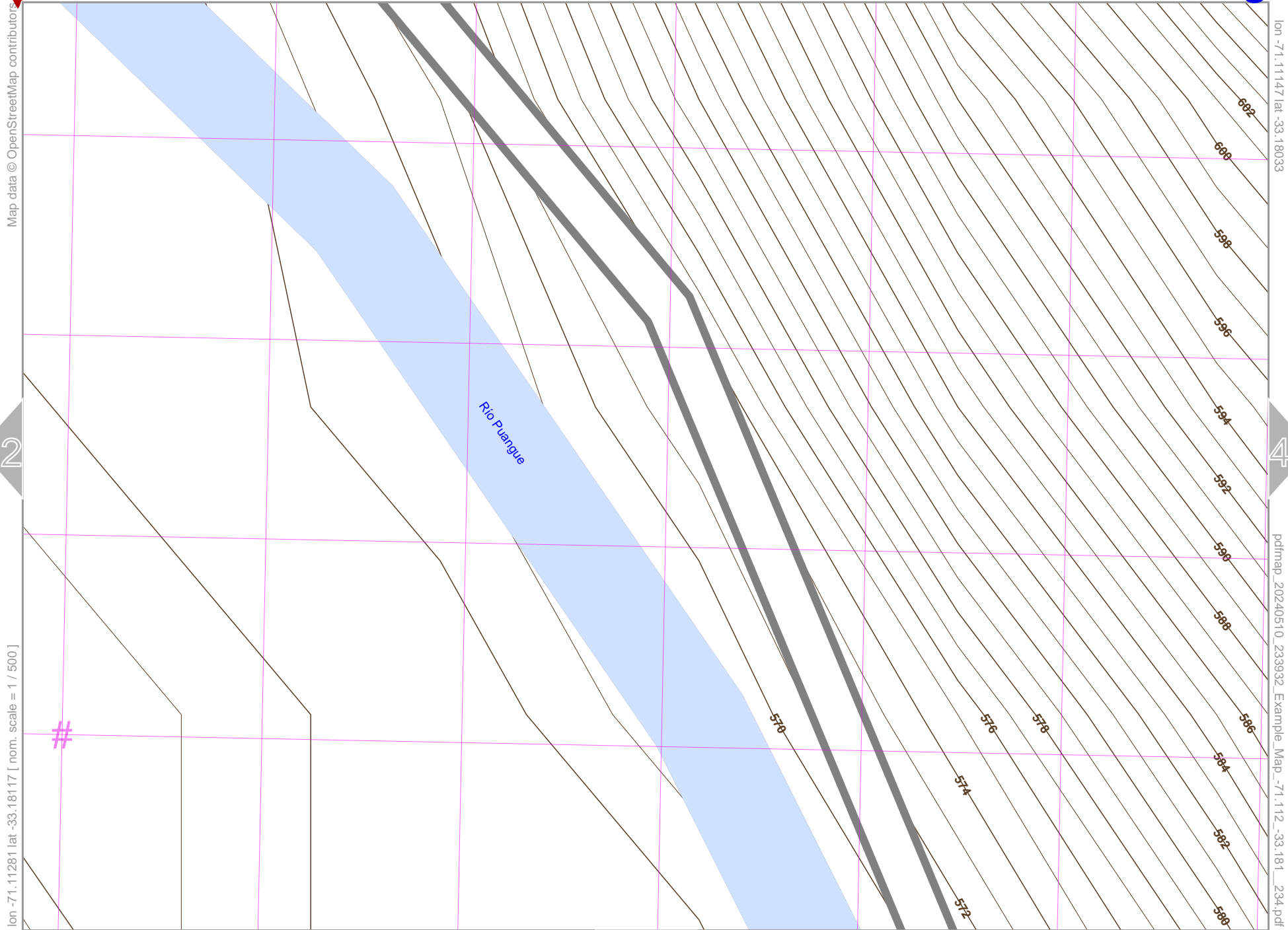
3



Example_Map

3

top



Map data © OpenStreetMap contributors

lon -71.1147 lat -33.18033

lon -71.11281 lat -33.18117 [nom. scale = 1 / 500]

pdfmap_20240510_233932_Example_Map_-71.112_-33.181_234.pdf

UTM: 19 H easting 303.02 km northing 6326.66 km
 UTM-Grid-width = 20m
 Contour interval = 1m

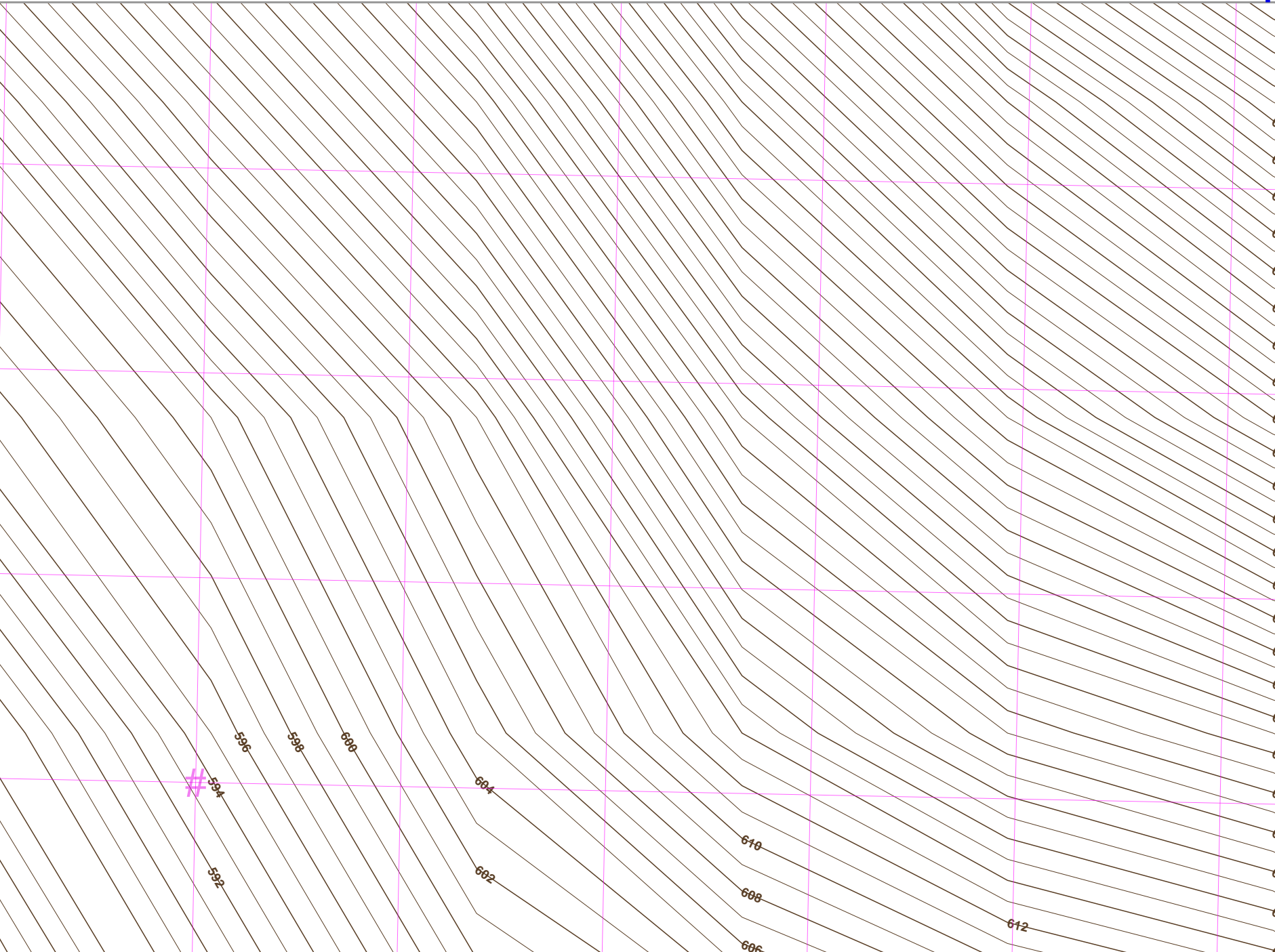


Example_Map

Map data © OpenStreetMap contributors

lon -71.11147 lat -33.18117 [nom. scale = 1 / 500]

lon -71.11013 lat -33.18033
pdfmap_20240510_233932_Example_Map_-71.112_-33.181_234.pdf



UTM: 19 H easting 303.16 km northing 6326.66 km
 UTM-Grid-width = 20m
 Contour interval = 1m



Example_Map

2

5

lon -71.11281 lat -33.18117



pdfmap_20240510_233932_Example_Map_-71.112_-33.181_234.pdf

lon -71.11415 lat -33.18201 [nom. scale = 1 / 500]

#

Camino Colligay

UTM: 19 H easting 302.90 km northing 6326.56 km
UTM-Grid-width = 20m
Contour interval = 1m



www.milvusmap.eu



top



Example_Map

3

6

top

Map data © OpenStreetMap contributors

lon -71.11147 lat -33.18117

885

566

995

588

Camino Colliguay

5

7

Rio Pungue

Camino Colliguay

Camino Quebrada Seca

lon -71.11281 lat -33.18201 [nom. scale = 1 / 500]

pdfmap_20240510_233932_Example_Map_-71.112_-33.181_234.pdf

UTM: 19 H easting 303.02 km northing 6326.56 km

UTM-Grid-width = 20m

Contour interval = 1m



www.milvusmap.eu





Example_Map

4

7

top

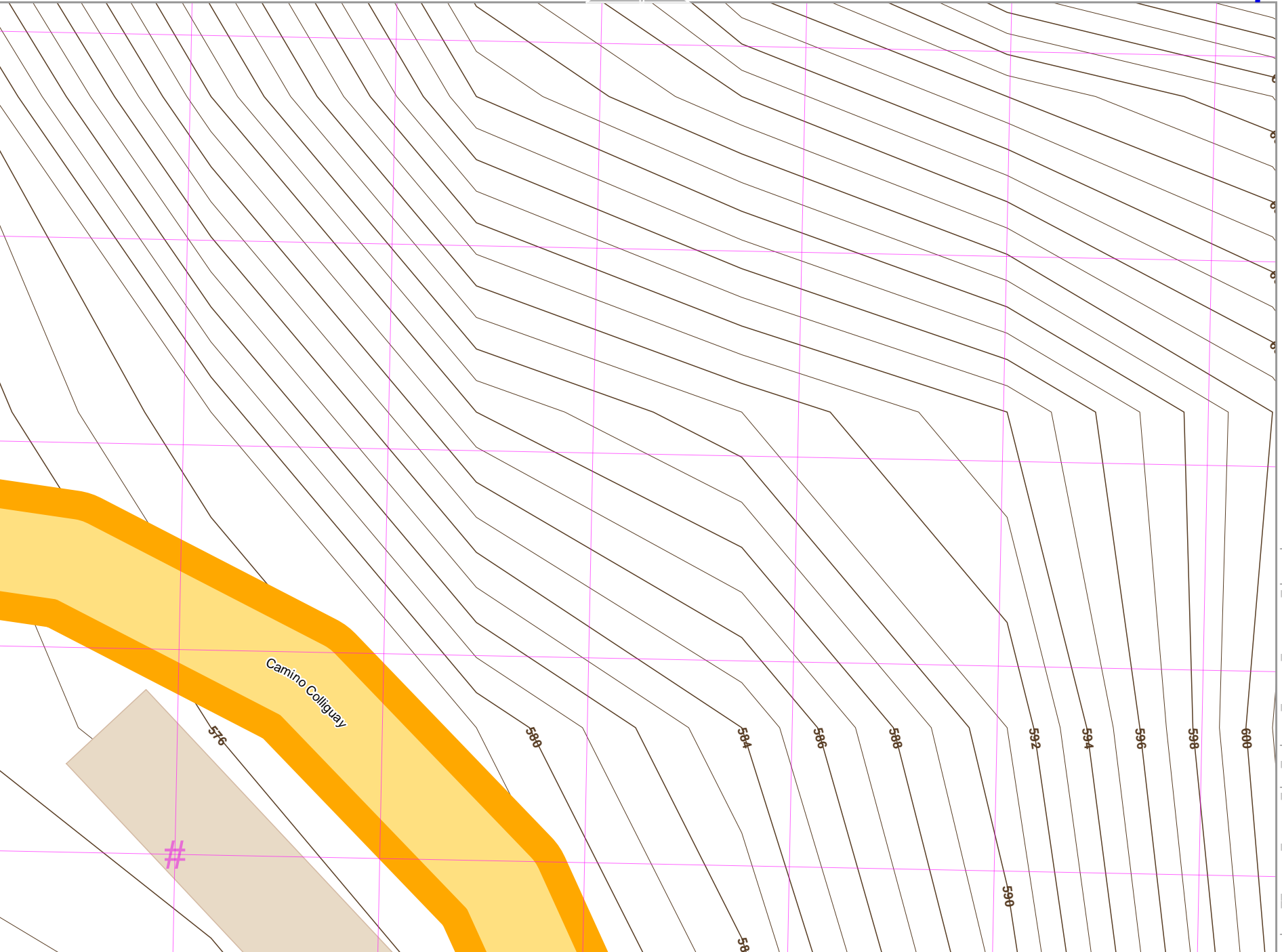
Map data © OpenStreetMap contributors

lon -71.11013 lat -33.18117



lon -71.11147 lat -33.18201 [nom. scale = 1 / 500]

pdfmap_20240510_233932_Example_Map_-71.112_-33.181_234.pdf



UTM: 19 H easting 303.16 km northing 6326.56 km
 UTM-Grid-width = 20m
 Contour interval = 1m



www.milvusmap.eu

