

kolomyia

1

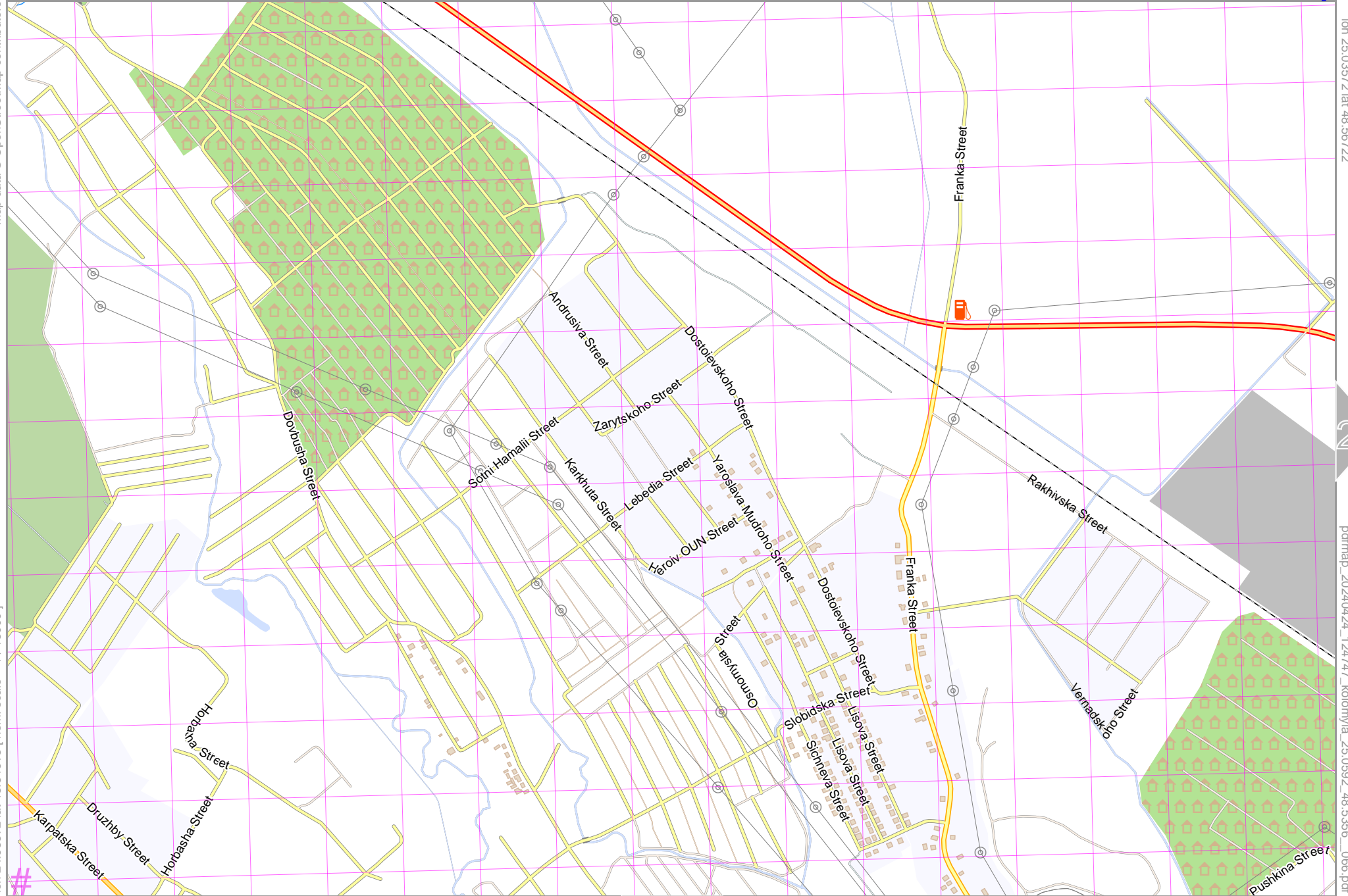
Map data © OpenStreetMap contributors

lon 25.03572 lat 48.56722

lon 24.98872 lat 48.54618 [nom. scale = 1 / 13000]

pdfmap_20240424_124747_kolomyia_25.0592_48.5356_066.pdf

UTM: 35 U easting 351.60 km northing 5379.00 km
UTM-Grid-width = 200m



2

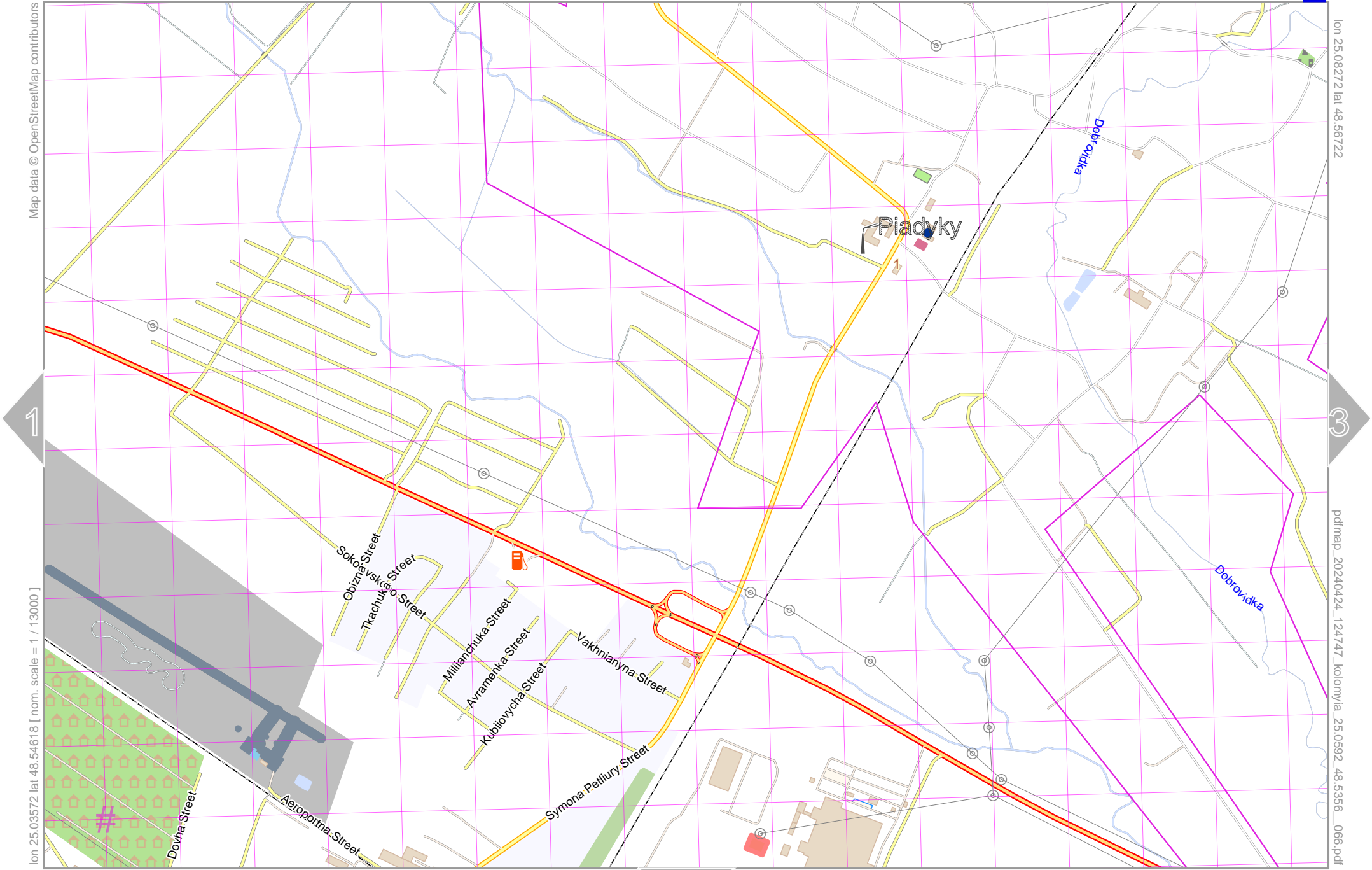
4

Map data © OpenStreetMap contributors

lon 25.08272 lat 48.56722

lon 25.03572 lat 48.54618 [nom. scale = 1 / 13000]

pdfmap_20240424_124717_kolomyia_25.0592_48.5356_066.pdf



UTM: 35 U easting 355.20 km northing 5379.00 km
 UTM-Grid-width = 200m

Map data © OpenStreetMap contributors

lon 25.12972 lat 48.56722

2

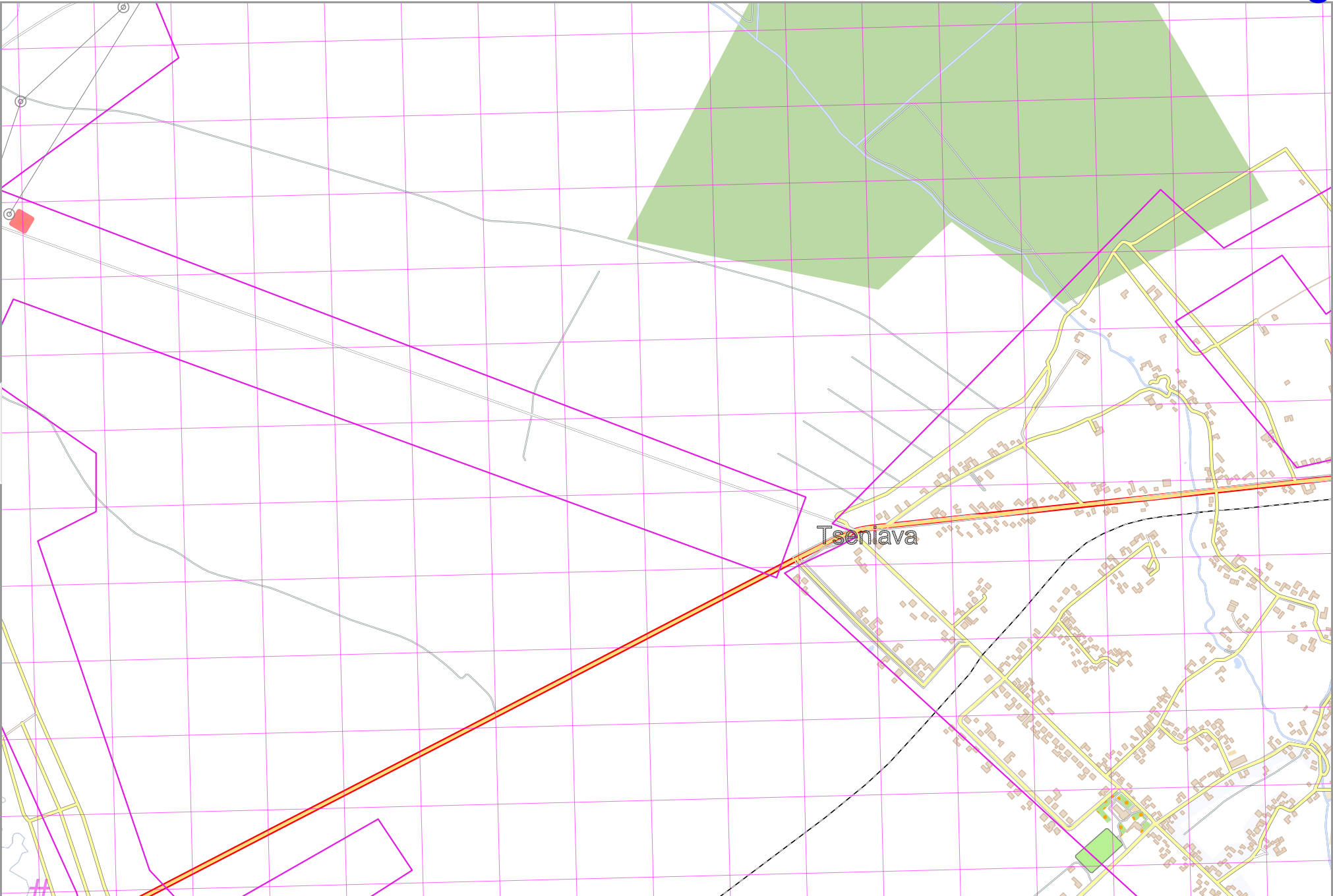
lon 25.08272 lat 48.54618 [nom. scale = 1 / 13000]

pdfmap_20240424_124747_kolomyia_25.0592_48.5356_066.pdf

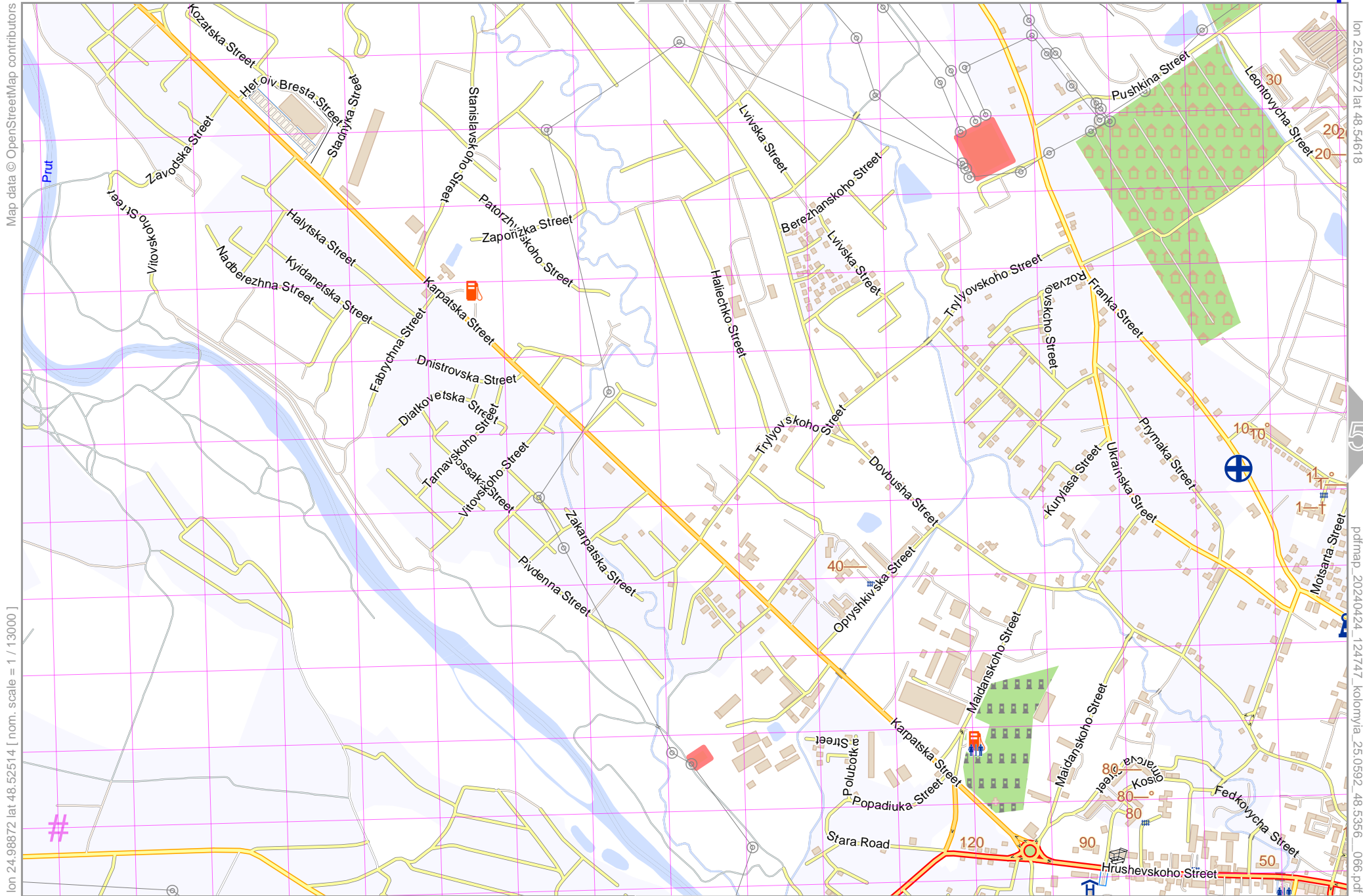
Tseniava

6

UTM: 35 U easting 358.60 km northing 5378.80 km
UTM-Grid-width = 200m



kolomyia



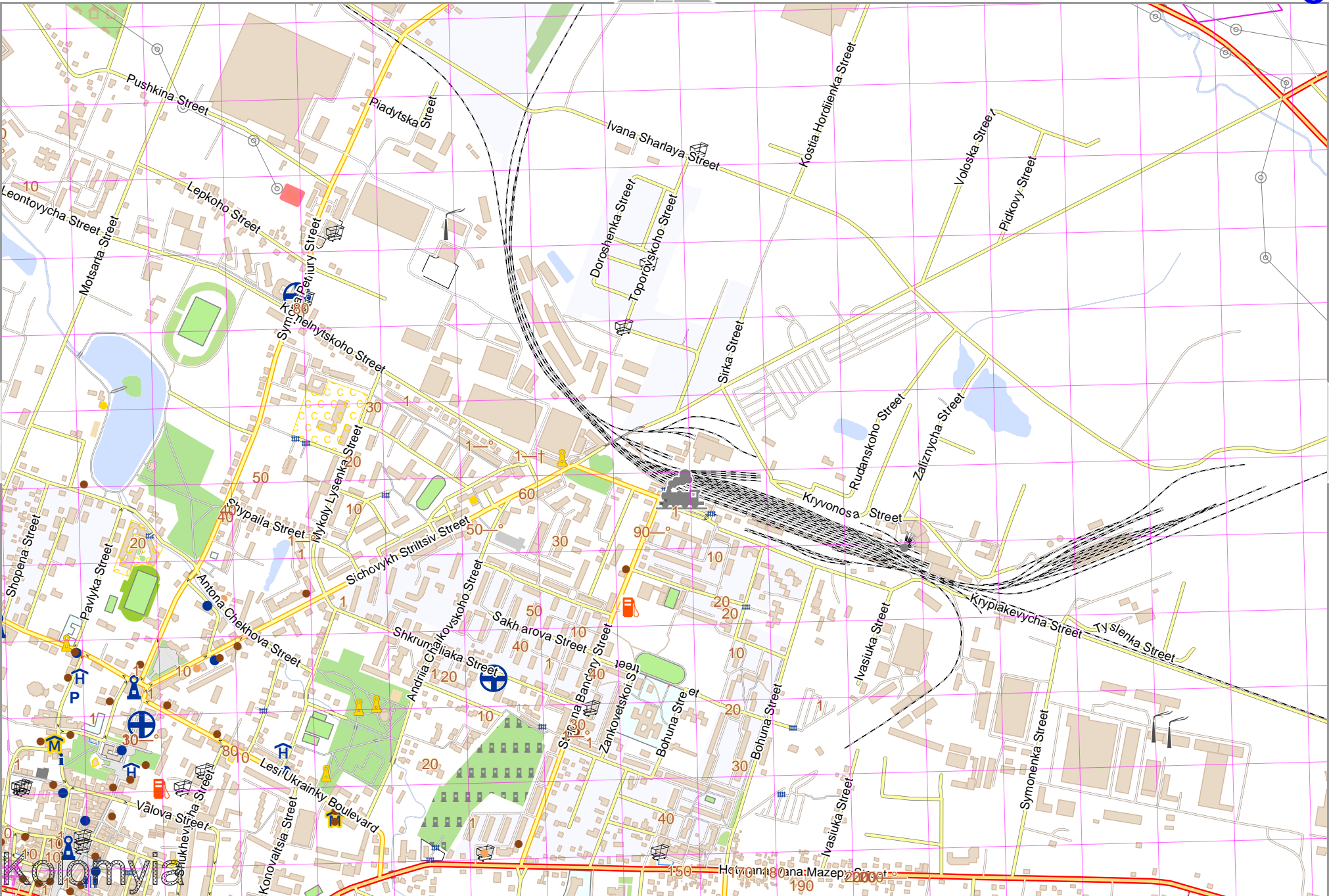
Map data © OpenStreetMap contributors

lon 24.98872 lat 48.52514 [nom. scale = 1 / 13000]

lon 25.03572 lat 48.54618

pdfmap_20240424_124747_kolomyia_25.0592_48.5356_066.pdf

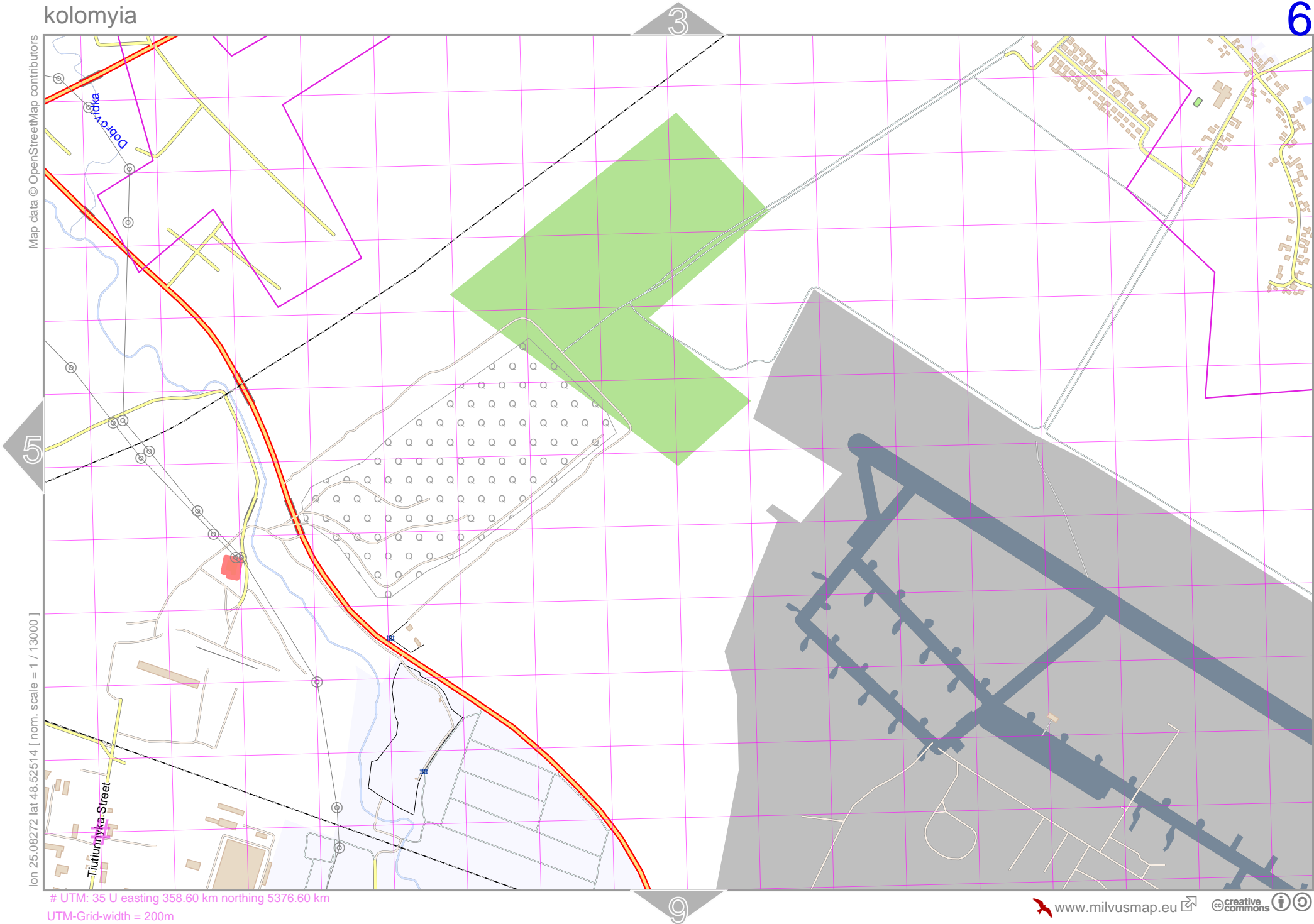
UTM: 35 U easting 351.60 km northing 5376.80 km
UTM-Grid-width = 200m



Map data © OpenStreetMap contributors

lon 25.08272 lat 48.52514 [nom. scale = 1 / 13000]

UTM: 35 U easting 358.60 km northing 5376.60 km
UTM-Grid-width = 200m



lon 25.12972 lat 48.54618

pdfmap_20240424_124747_kolomyia_25.0592_48.5356_066.pdf

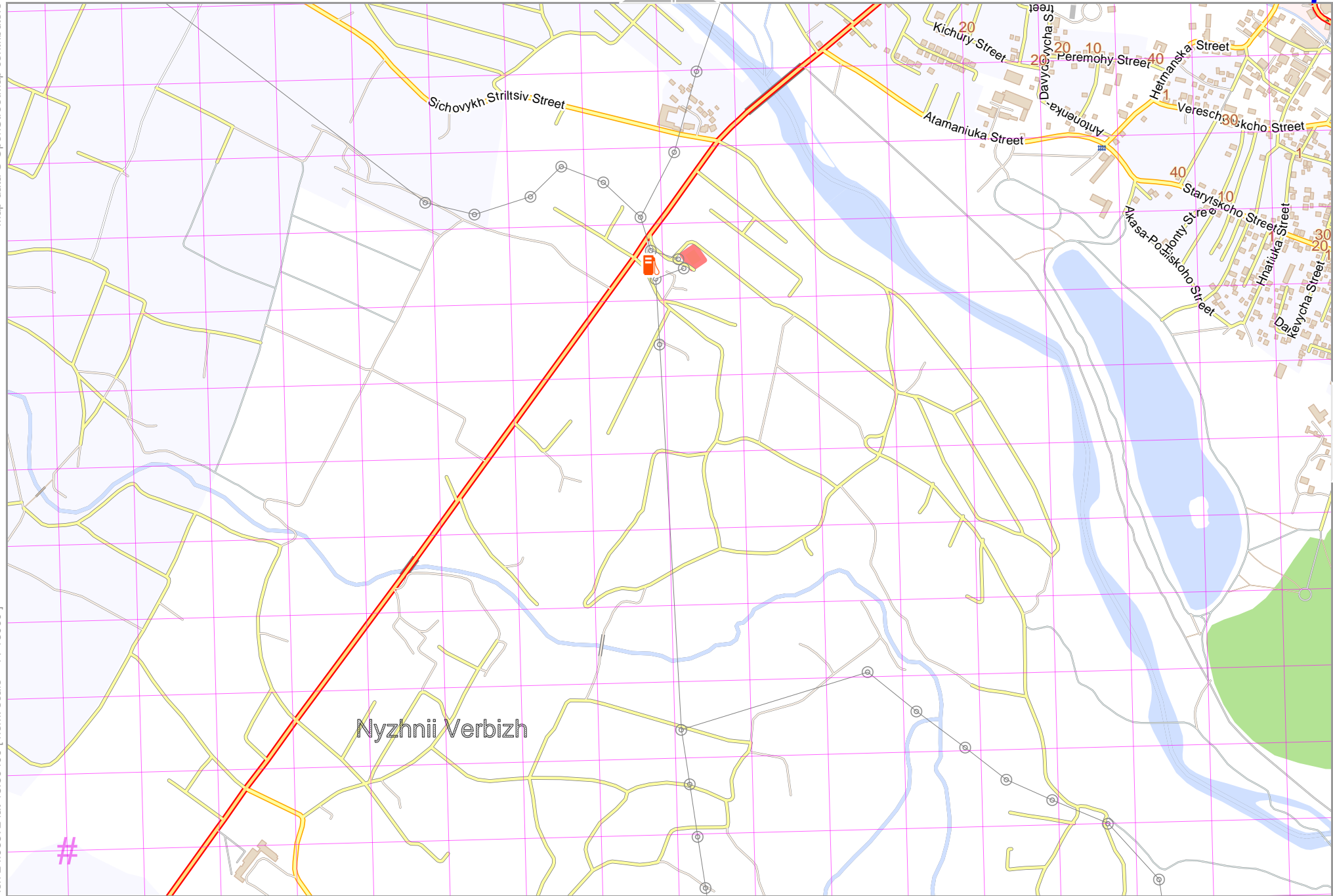
kolomyia

Map data © OpenStreetMap contributors

lon 24.98872 lat 48.50409 [nom. scale = 1 / 13000]

lon 25.03572 lat 48.52514

pdfmap_20240424_124747_kolomyia_25.0592_48.5356_066.pdf



#

Nyzhnii Verbizh

UTM: 35 U easting 351.60 km northing 5374.40 km
UTM-Grid-width = 200m

kolomyia

Map data © OpenStreetMap contributors

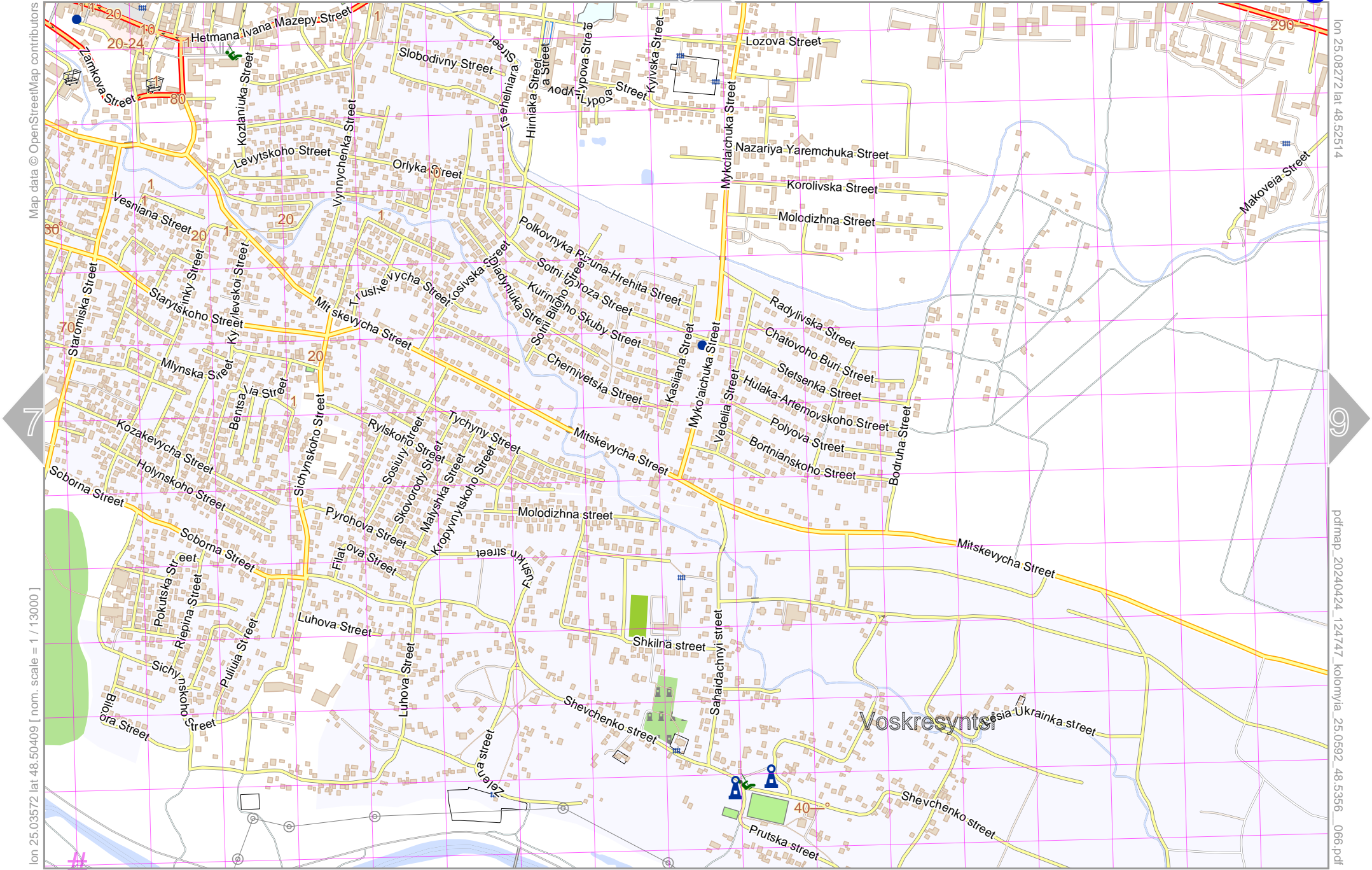
lon 25.08272 lat 48.52514

lon 25.03572 lat 48.50409 [nom. scale = 1 / 13000]

pdfmap_20240424_124717_kolomyia_25.0592_48.5356_066.pdf

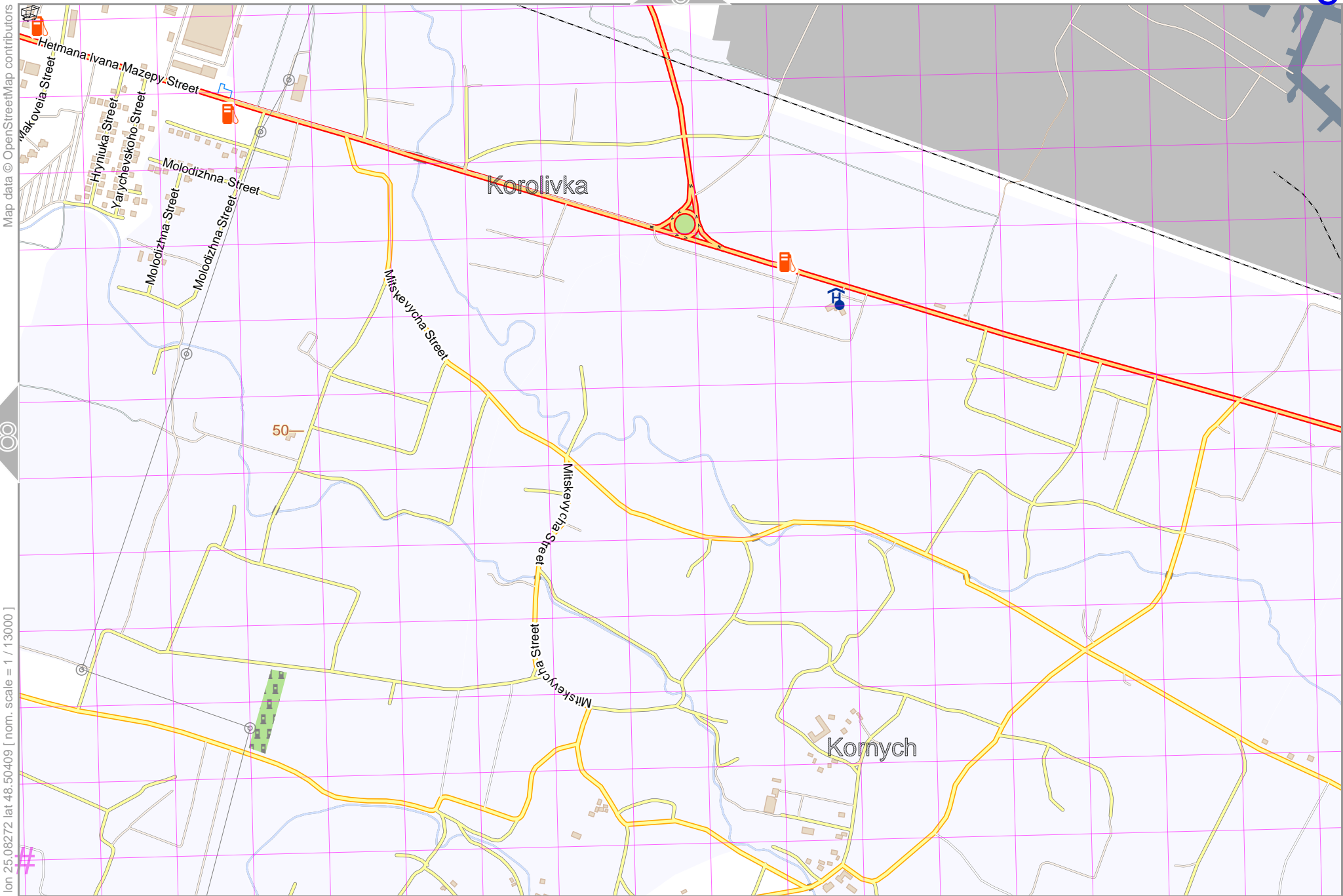
UTM: 35 U easting 355.00 km northing 5374.20 km

UTM-Grid-width = 200m



kolomyia

6



Map data © OpenStreetMap contributors

lon 25.08272 lat 48.50409 [nom. scale = 1 / 13000]

lon 25.12972 lat 48.52514

pdfmap_20240424_124747_kolomyia_25.0592_48.5356_066.pdf

UTM: 35 U easting 358.40 km northing 5374.20 km
UTM-Grid-width = 200m