

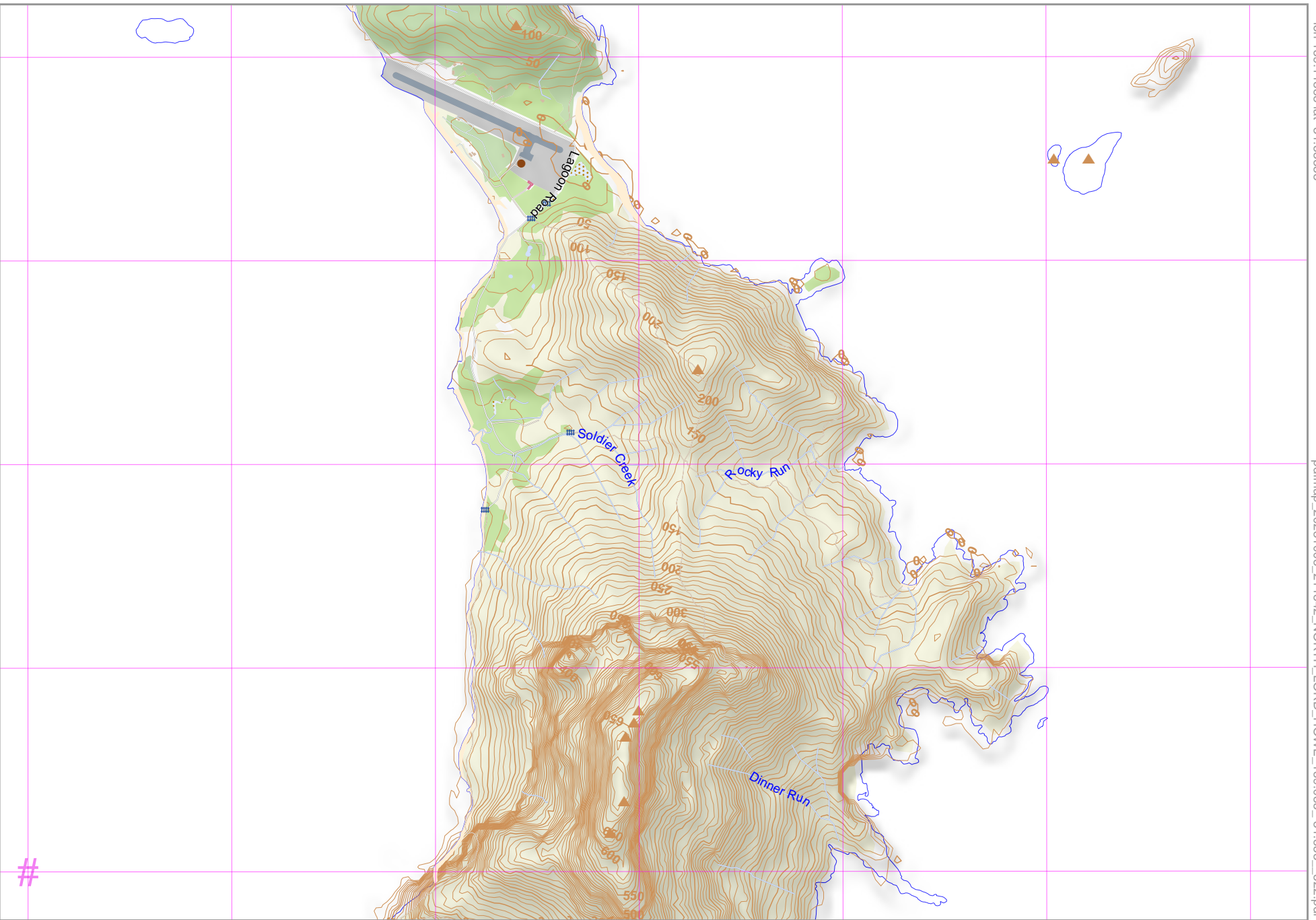
NORTH LORD HOWE

lon 159.11888 lat -31.53358

pdfmap_20231005_211842_NORTH_LORD_HOWE_159.085_-31.553_522.pdf

Map data © OpenStreetMap contributors

lon 159.05121 lat -31.57417 [nom. scale = 1 / 25000]



UTM: 57 J easting 505.00 km northing 6507.00 km
UTM-Grid-width = 1000m
Contour interval = 10m