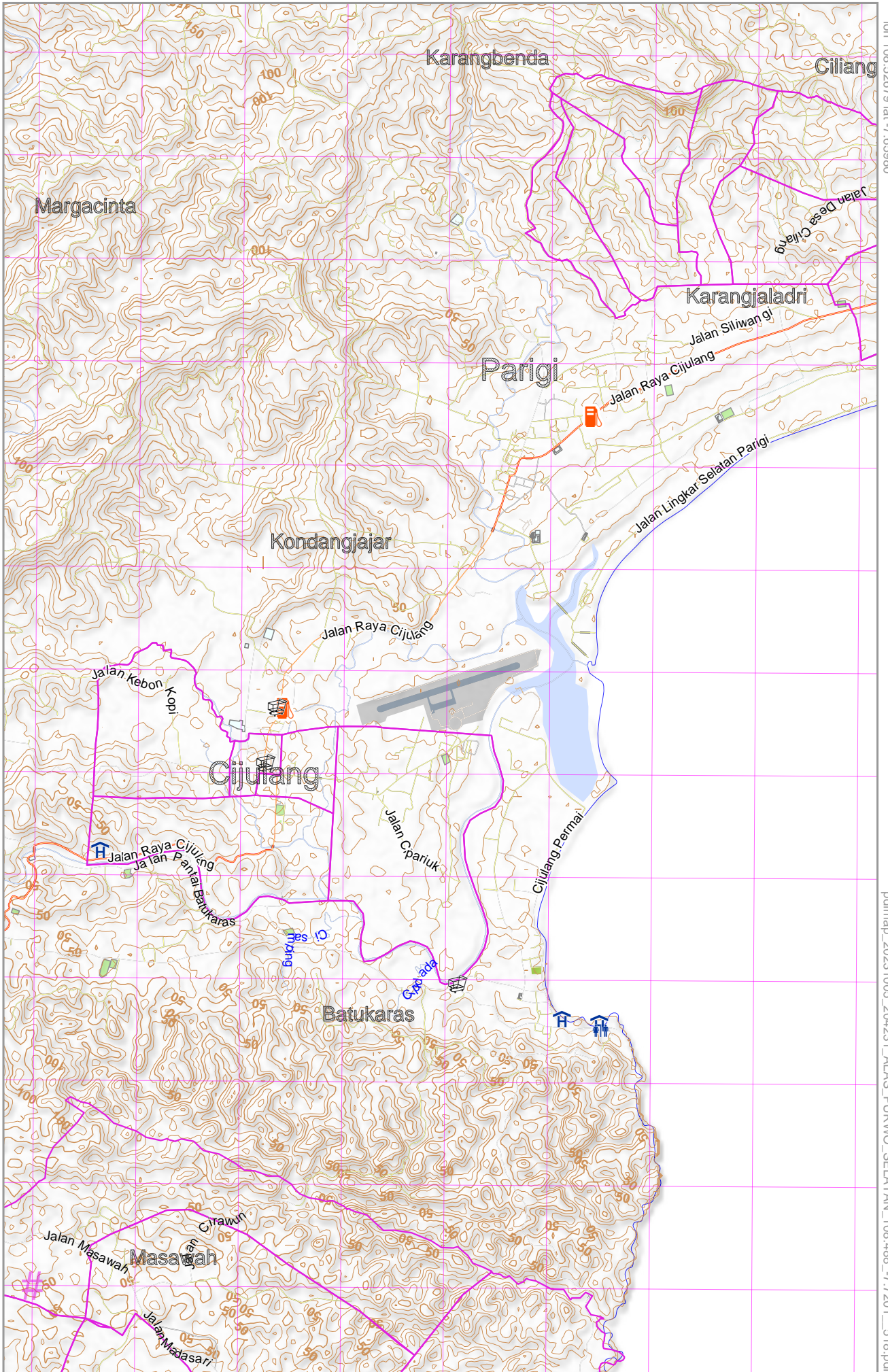


ALAS PURWO SELATAN

lon 108.52679 lat -7.65980

Map data © OpenStreetMap contributors

lon 108.44974 lat -7.78051 [nom. scale = 1 / 50000]



pdfmap_20231005_204231_ALAS_PURWO_SELATAN_108.488_-7.7201_518.pdf

UTM: 49 M easting 219.00 km northing 9140.00 km

UTM-Grid-width = 1000m

Contour interval = 10m