

LA PAZ - BOLIVIA

Map data CCBYSA2 fasm.org+osm.org contributors

lon -68.18576 lat -16.44149 [ncom. scale = 1 / 10000]



lon -68.16241 lat -16.42469

pdfmap_20220912_202632_LA_PAZ_BOLIVIA_-68.127_-16.466_643.pdf

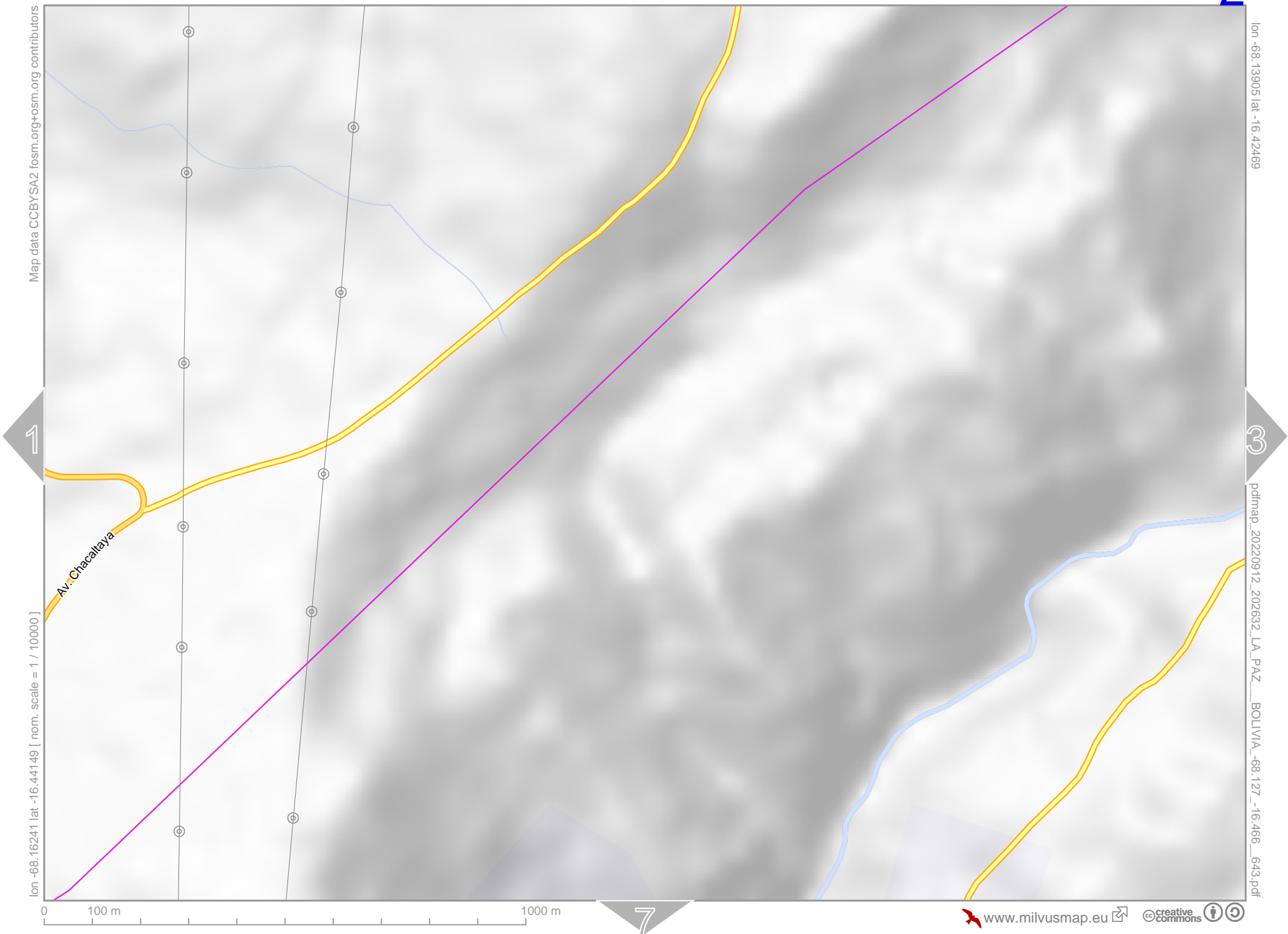
LA PAZ - BOLIVIA

Map data © CCBY-SA2 fism.org+osm.org contributors

lon -68.16241 lat -16.44149 [ncom. scale = 1 / 10000]

lon -68.13905 lat -16.42469

pdfmap_20220912_202632_LA_PAZ_BOLIVIA_-68.127_-16.466_643.pdf



LA PAZ - BOLIVIA

Map data © OpenStreetMap contributors

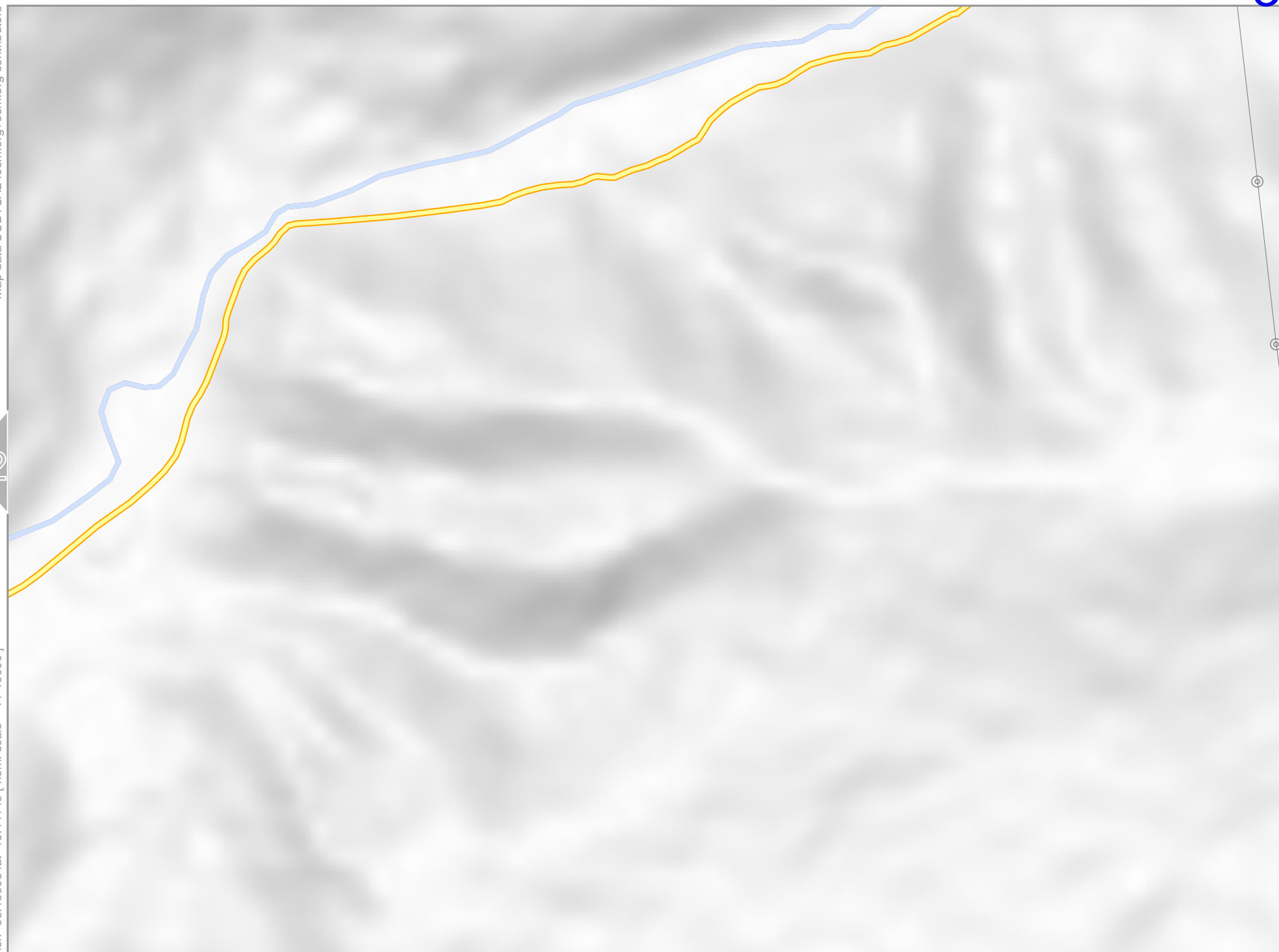
lon -68.13905 lat -16.44149 [ncom. scale = 1 / 10000]

lon -68.11569 lat -16.42469

2

4

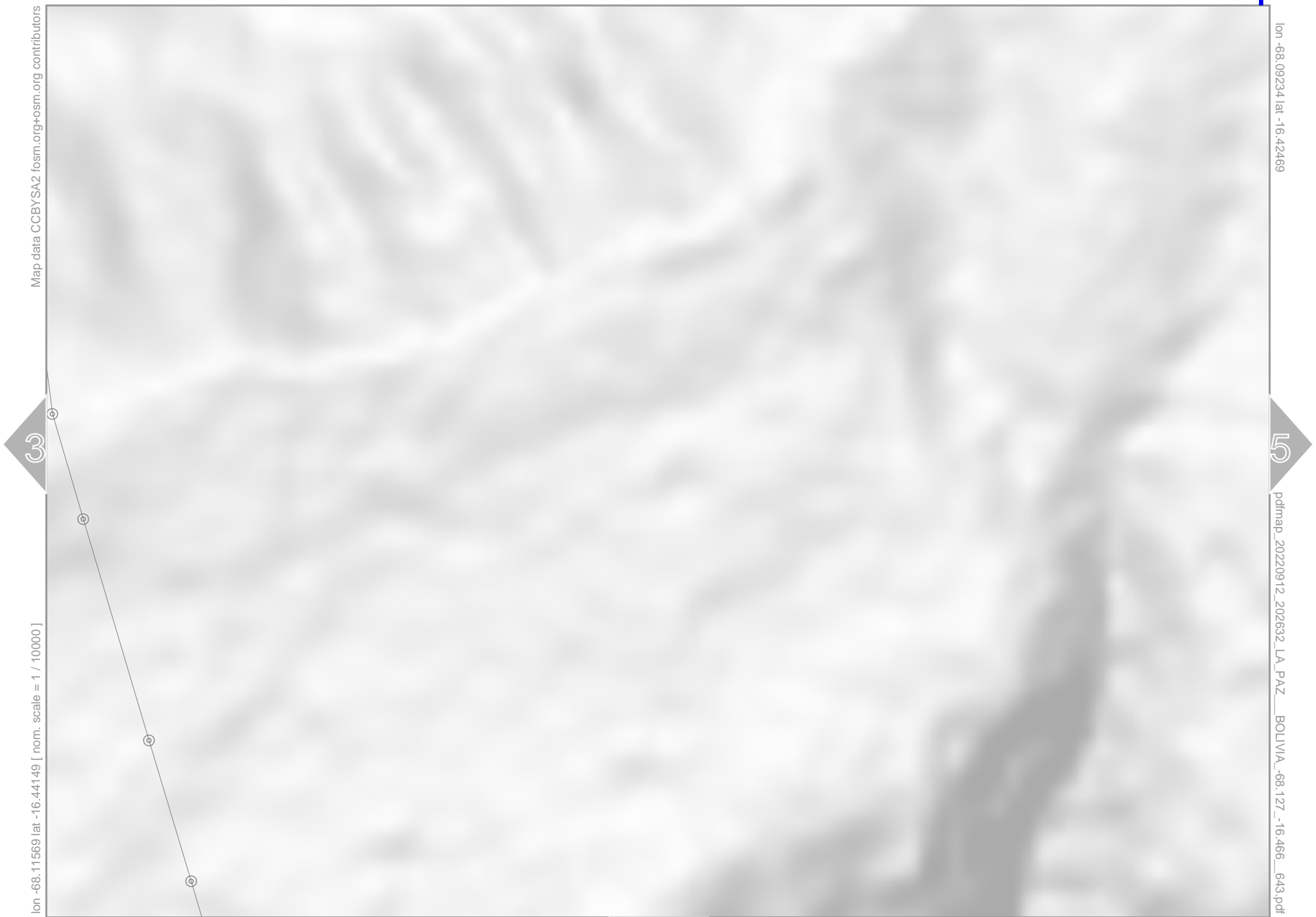
pdfmap_20220912_202632_LA_PAZ_BOLIVIA_-68.127_-16.466_643.pdf



LA PAZ - BOLIVIA

Map data CCBYSA2 fasm.org+osm.org contributors

lon -68.09234 lat -16.42469



lon -68.11569 lat -16.44149 [ncom. scale = 1 / 10000]

5

pdfmap_20220912_202632_LA_PAZ_BOLIVIA_-68.127_-16.466_643.pdf

0 100 m 1000 m

9

Map data © OpenStreetMap contributors

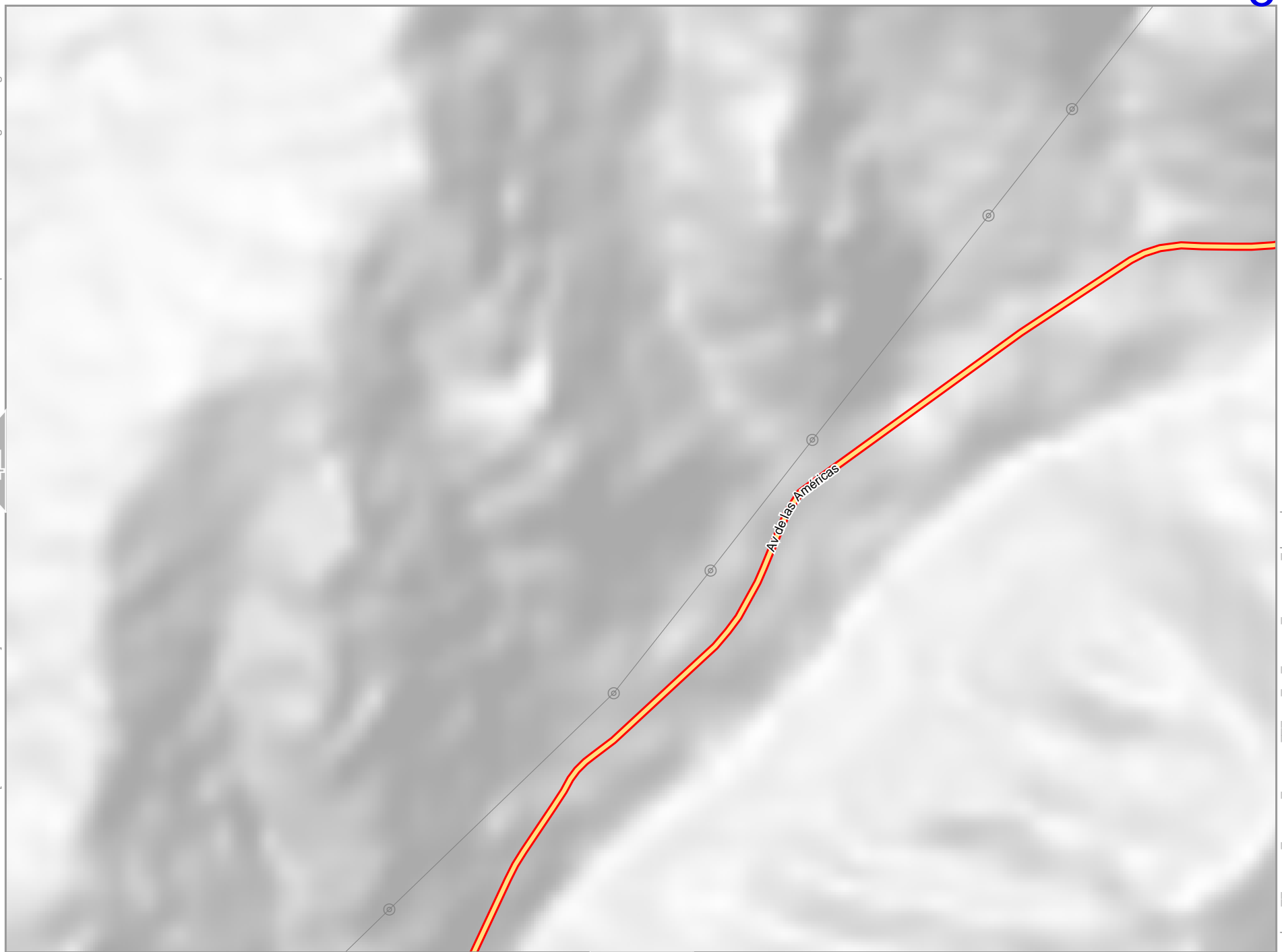
lon -68.09234 lat -16.44149 [ncom. scale = 1 / 10000]

lon -68.06898 lat -16.42469

pdfmap_20220912_202632_LA_PAZ_BOLIVIA_-68.127_-16.466_643.pdf

4

10



LA PAZ - BOLIVIA

top

Map data © OpenStreetMap contributors

lon -68.18576 lat -16.45829 [ncom. scale = 1 / 10000]

0 100 m 1000 m

1

6

lon -68.16241 lat -16.44149

7

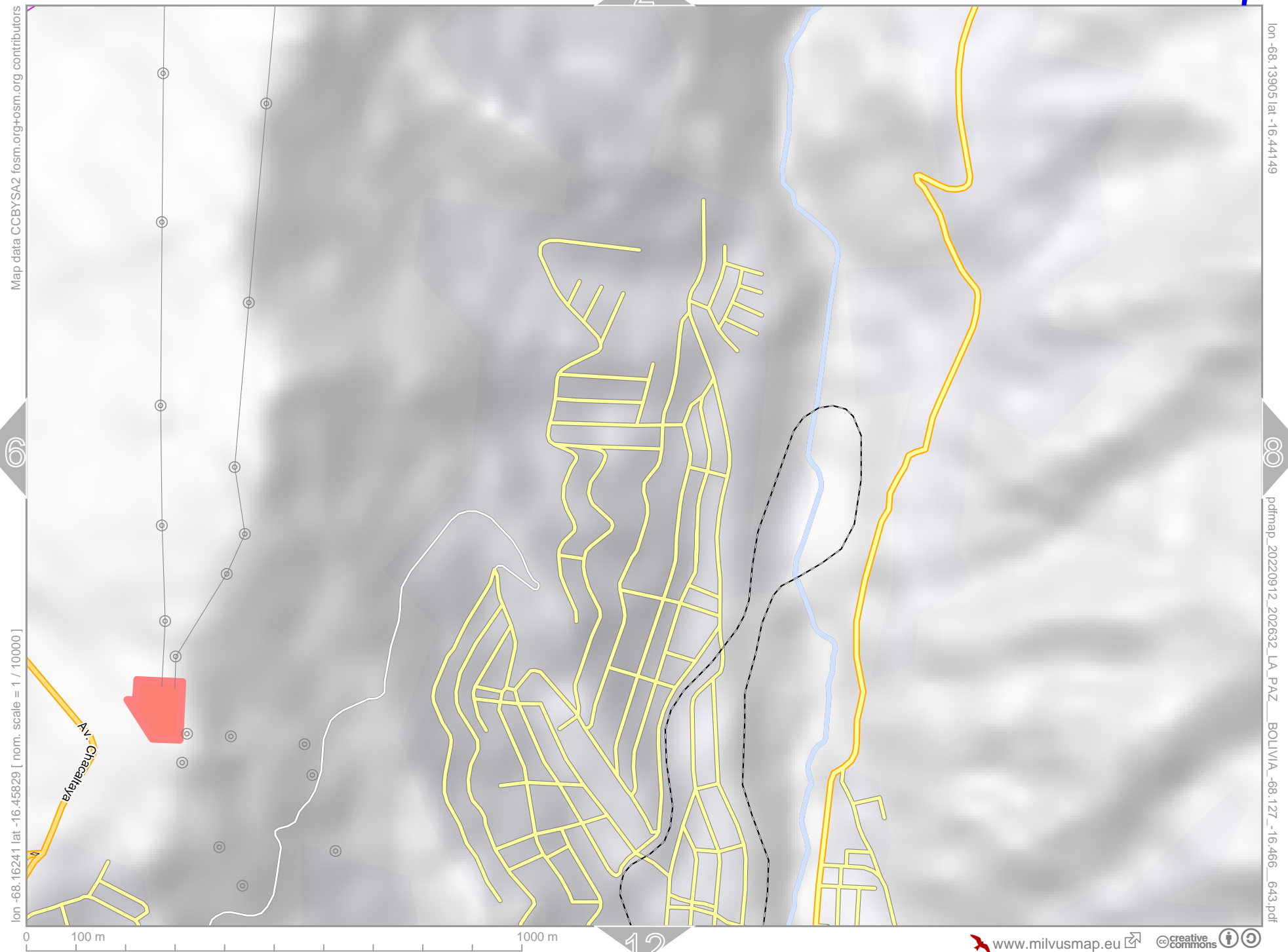
pdfmap_20220912_202632_LA_PAZ_BOLIVIA_-68.127_-16.466_643.pdf

Av. Santa Vera Cruz

LA PAZ - BOLIVIA

2

12



Map data CCBYSA2 fasm.org+osm.org contributors

lon -68.16241 lat -16.45829 [ncm. scale = 1 / 10000]

lon -68.13905 lat -16.44149

pdfmap_20220912_202632_LA_PAZ_BOLIVIA_-68.127_-16.466_643.pdf

LA PAZ - BOLIVIA

3

8

top

Map data © OpenStreetMap contributors

lon -68.11569 lat -16.44149

lon -68.13905 lat -16.45829 [nom. scale = 1 / 10000]



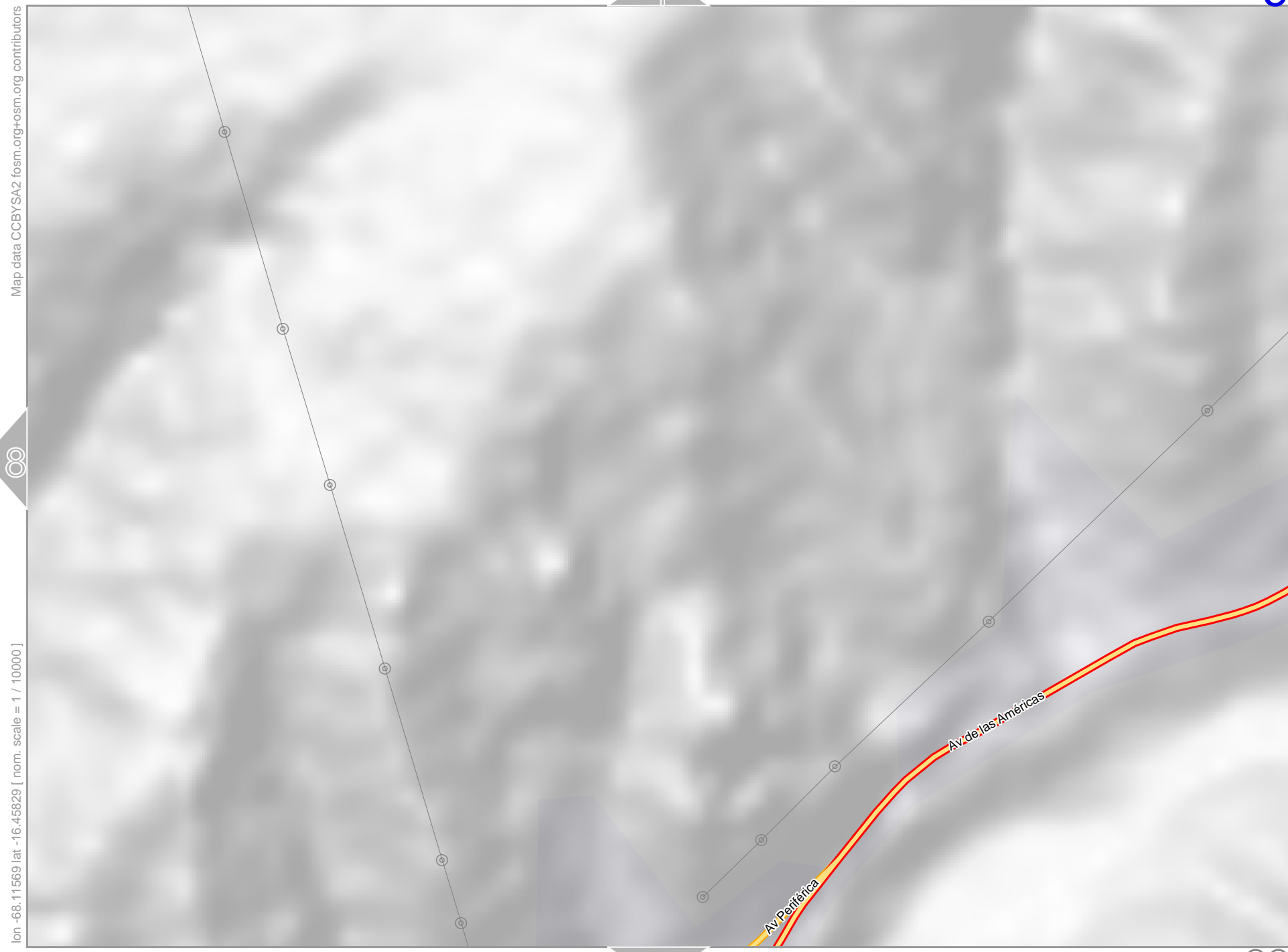
pdfmap_20220912_202632_LA_PAZ_BOLIVIA_-68.127_-16.466_643.pdf



13

LA PAZ - BOLIVIA

4



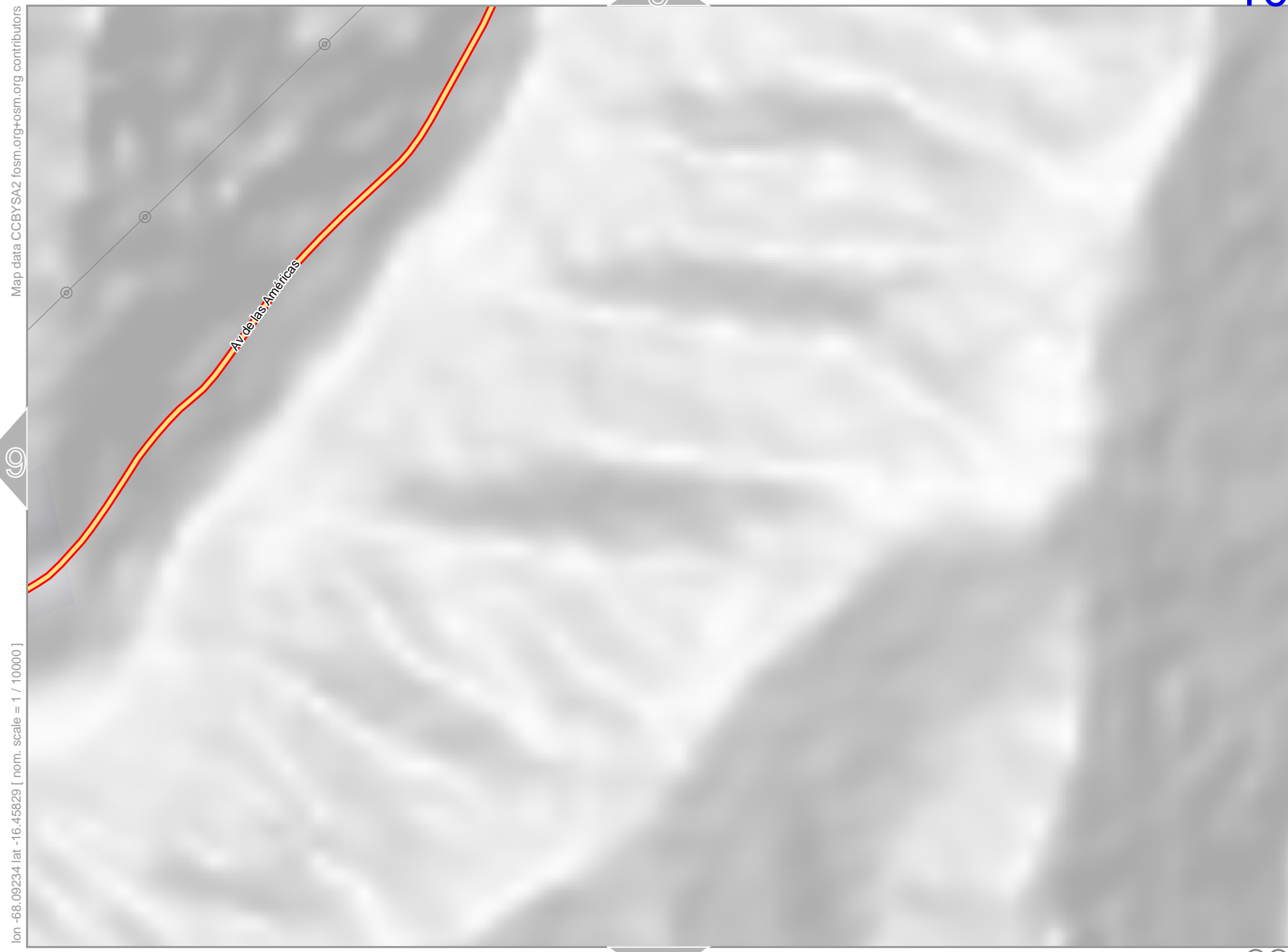
lon -68.09234 lat -16.44149

10

pdfmap_20220912_202632_LA_PAZ_BOLIVIA_-68.127_-16.466_643.pdf

14

LA PAZ - BOLIVIA



LA PAZ - BOLIVIA

Map data CCBYSA2 fosc.org+osm.org contributors

lon -68.18576 lat -16.47509 [nom. scale = 1 / 10000]

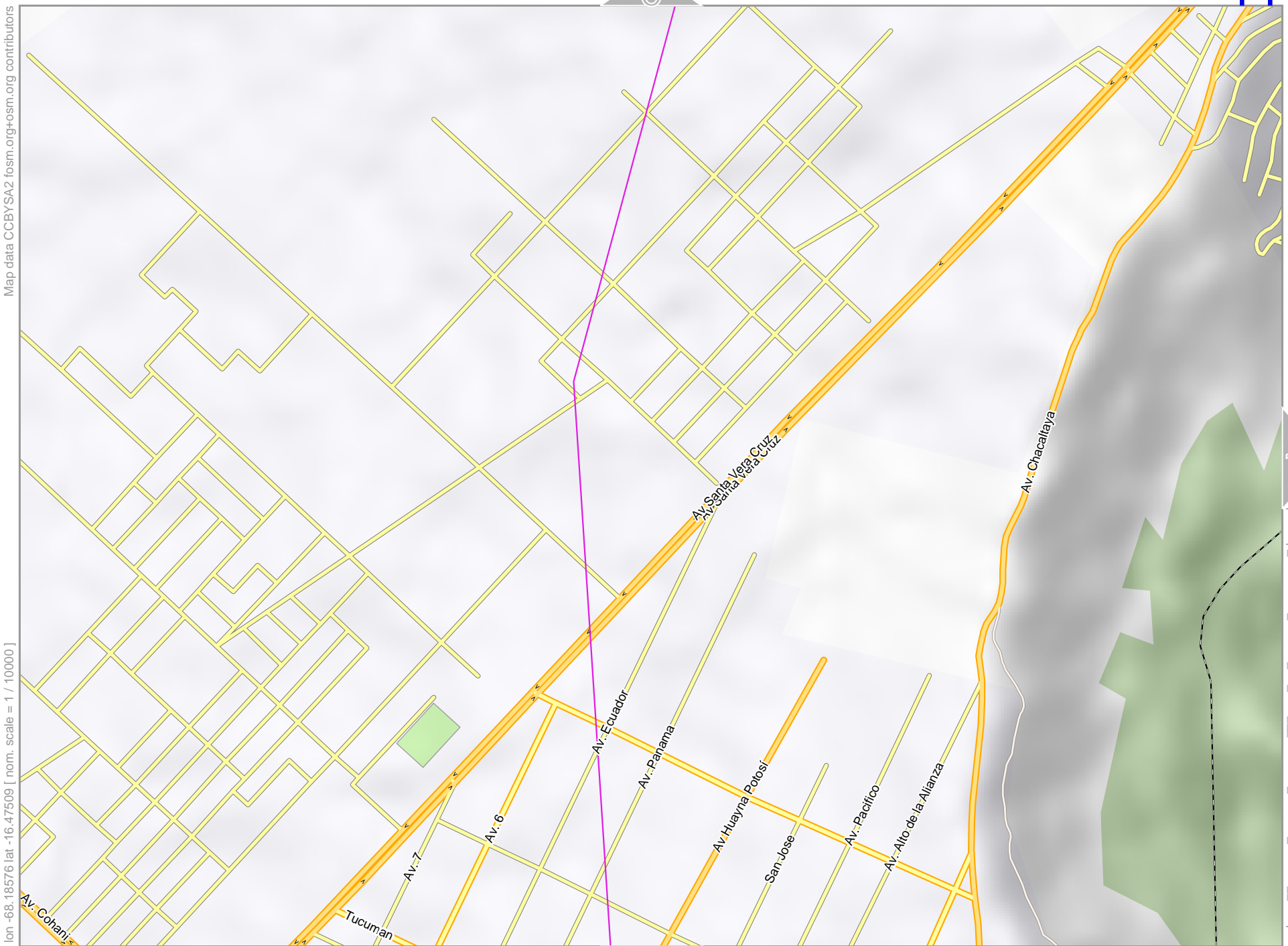
6

11

lon -68.16241 lat -16.45829

12

pdfmap_20220912_202632_LA_PAZ_BOLIVIA_-68.127_-16.466_643.pdf

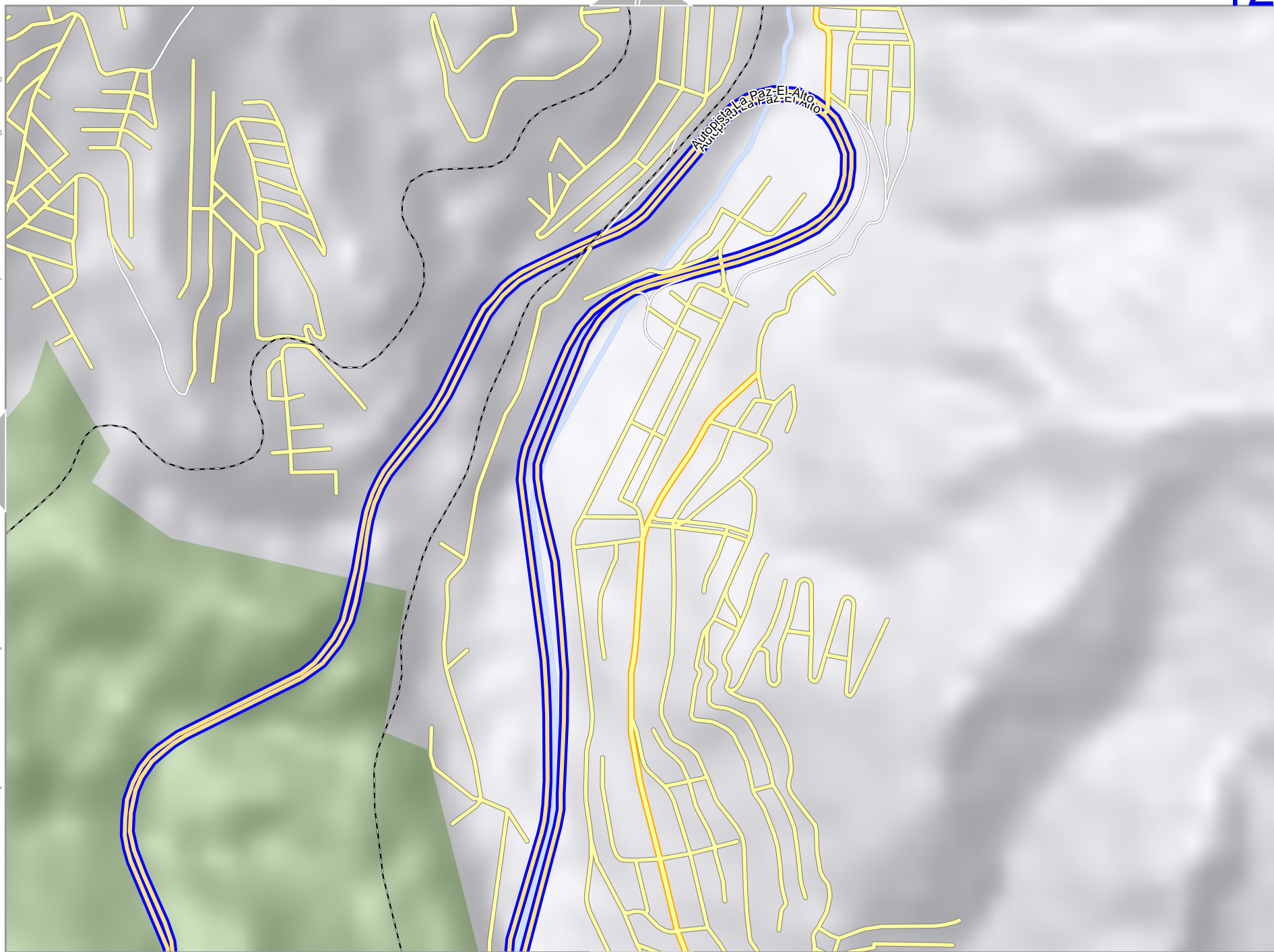


16

LA PAZ - BOLIVIA

Map data © CC BY-SA 2.0 fism.org+osm.org contributors

lon -68.16241 lat -16.47509 [ncm. scale = 1 / 10000]



lon -68.13905 lat -16.45829

pdfmap_20220912_202632_LA_PAZ_BOLIVIA_-68.127_-16.466_643.pdf

0 100 m 1000 m

Map data © OpenStreetMap contributors

lon -68.11569 lat -16.45829

12

14

lon -68.13905 lat -16.47509 [nom. scale = 1 / 10000]

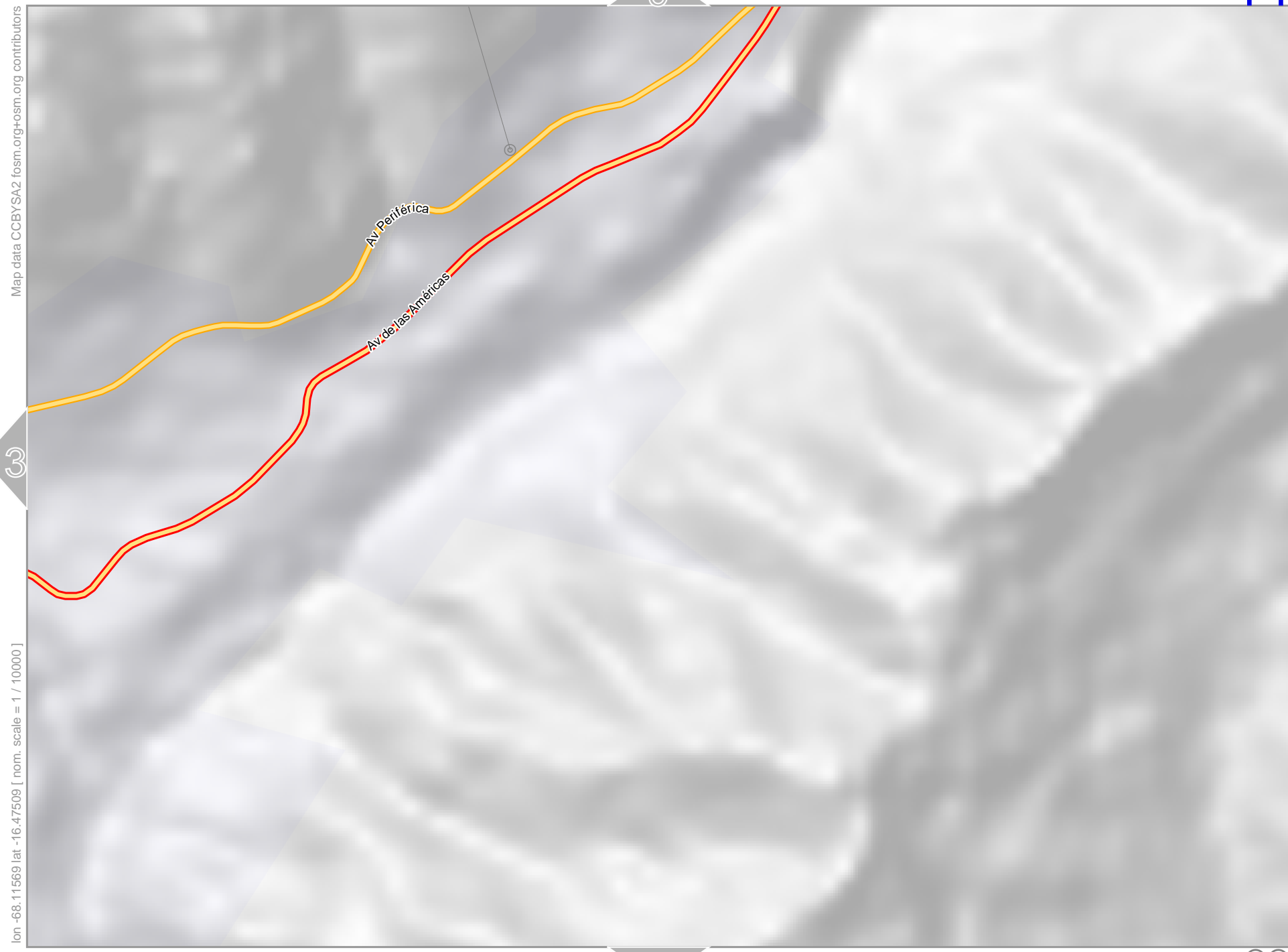
pdfmap_20220912_202632_LA_PAZ_BOLIVIA_-68.127_-16.466_643.pdf



18



LA PAZ - BOLIVIA



LA PAZ - BOLIVIA

10

Map data © OpenStreetMap contributors

lon -68.06898 lat -16.45829

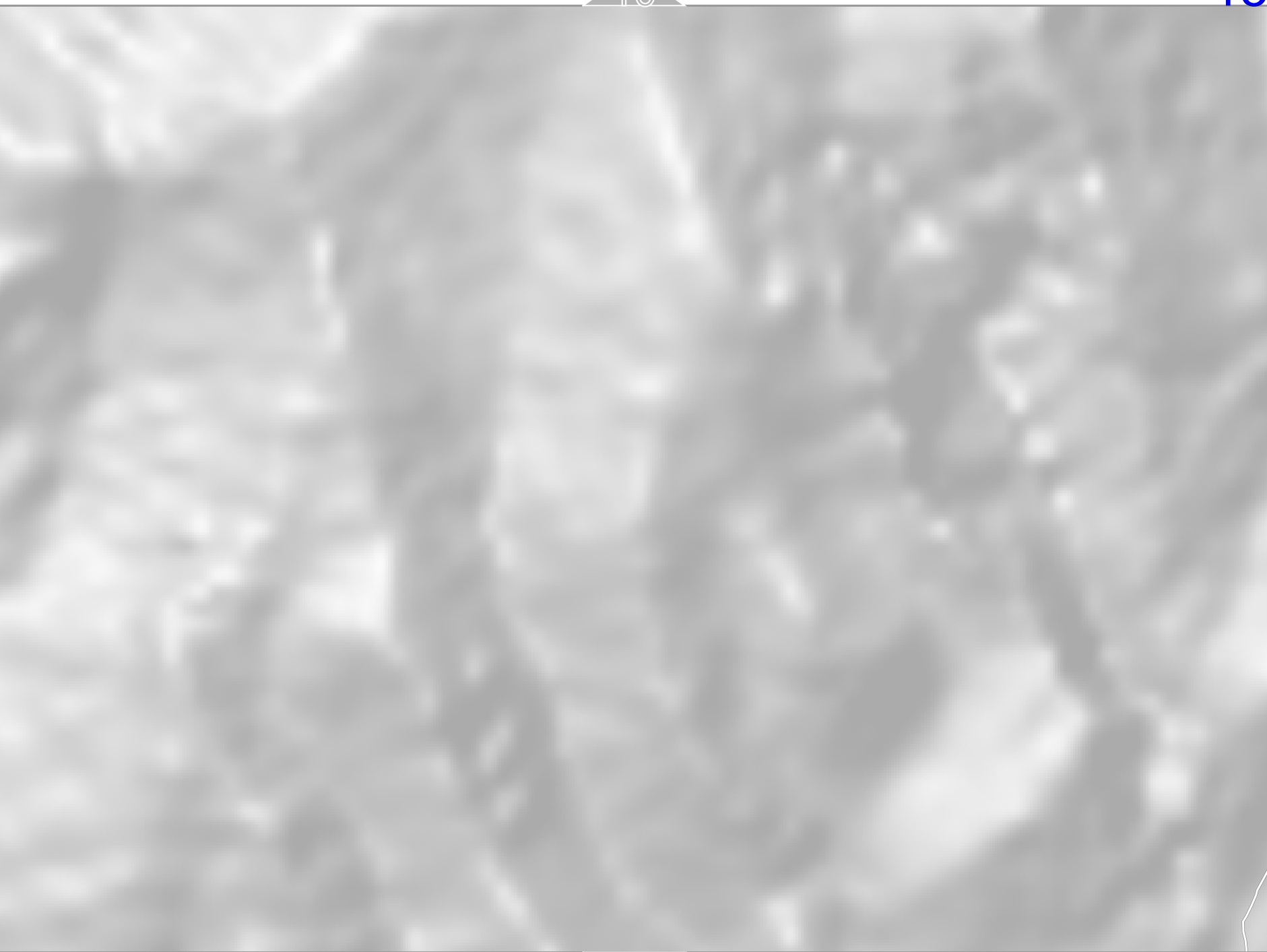
14

lon -68.09234 lat -16.47509 [nom. scale = 1 / 10000]

pdfmap_20220912_202632_LA_PAZ_BOLIVIA_-68.127_-16.466_643.pdf

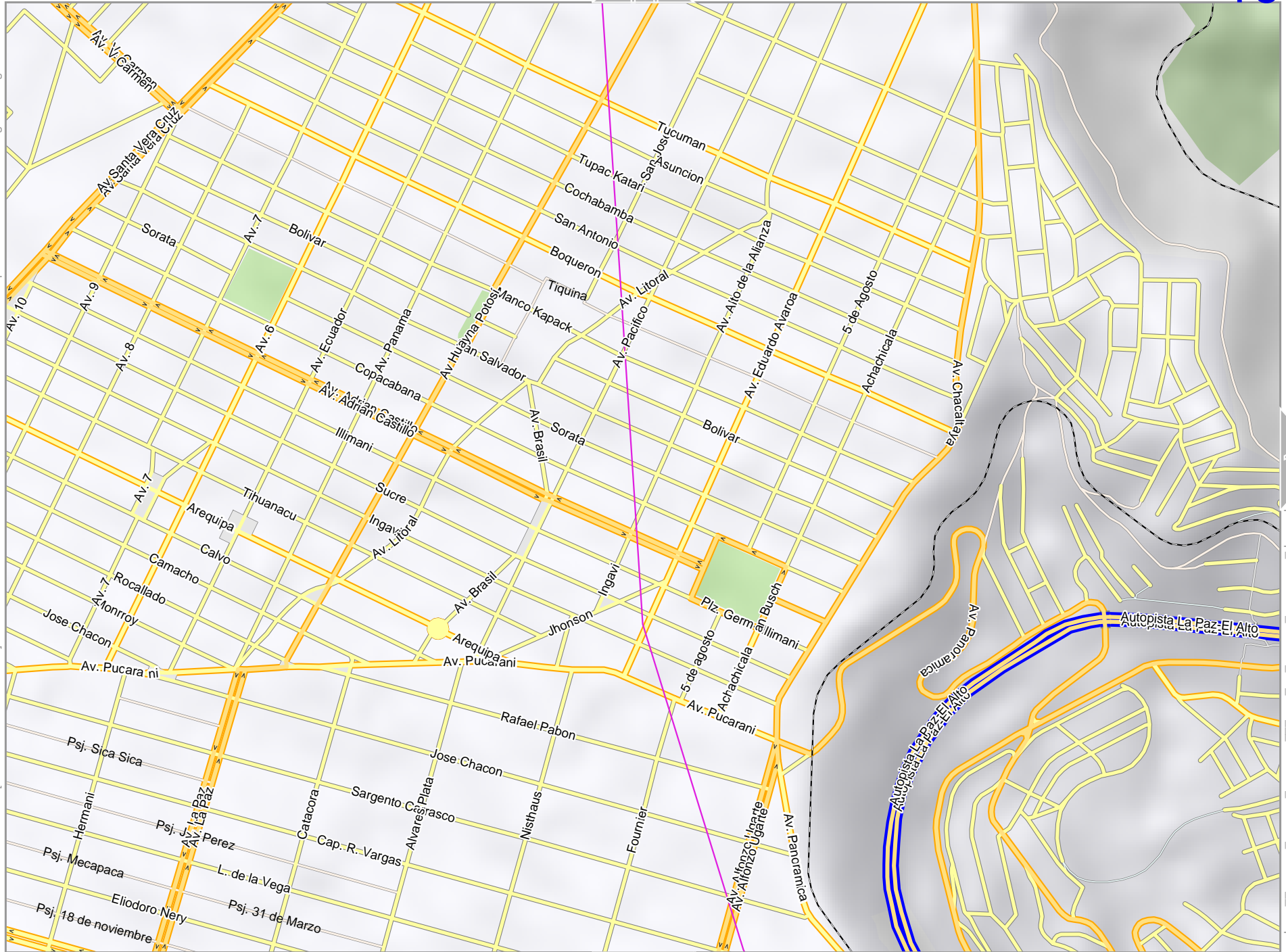


20



Map data © CC BY SA 2.0 f osm.org+osm.org contributors

lon -68.18576 lat -16.49189 [nom. scale = 1 / 100000]



lon -68.16241 lat -16.47509

pdfmap, 20220912, 202632, LA_PAZ - BOLIVIA, -68.127, -16.466, 643.pdf

Map data © CC BY SA 2.0 f os m . org - os m . org contributors

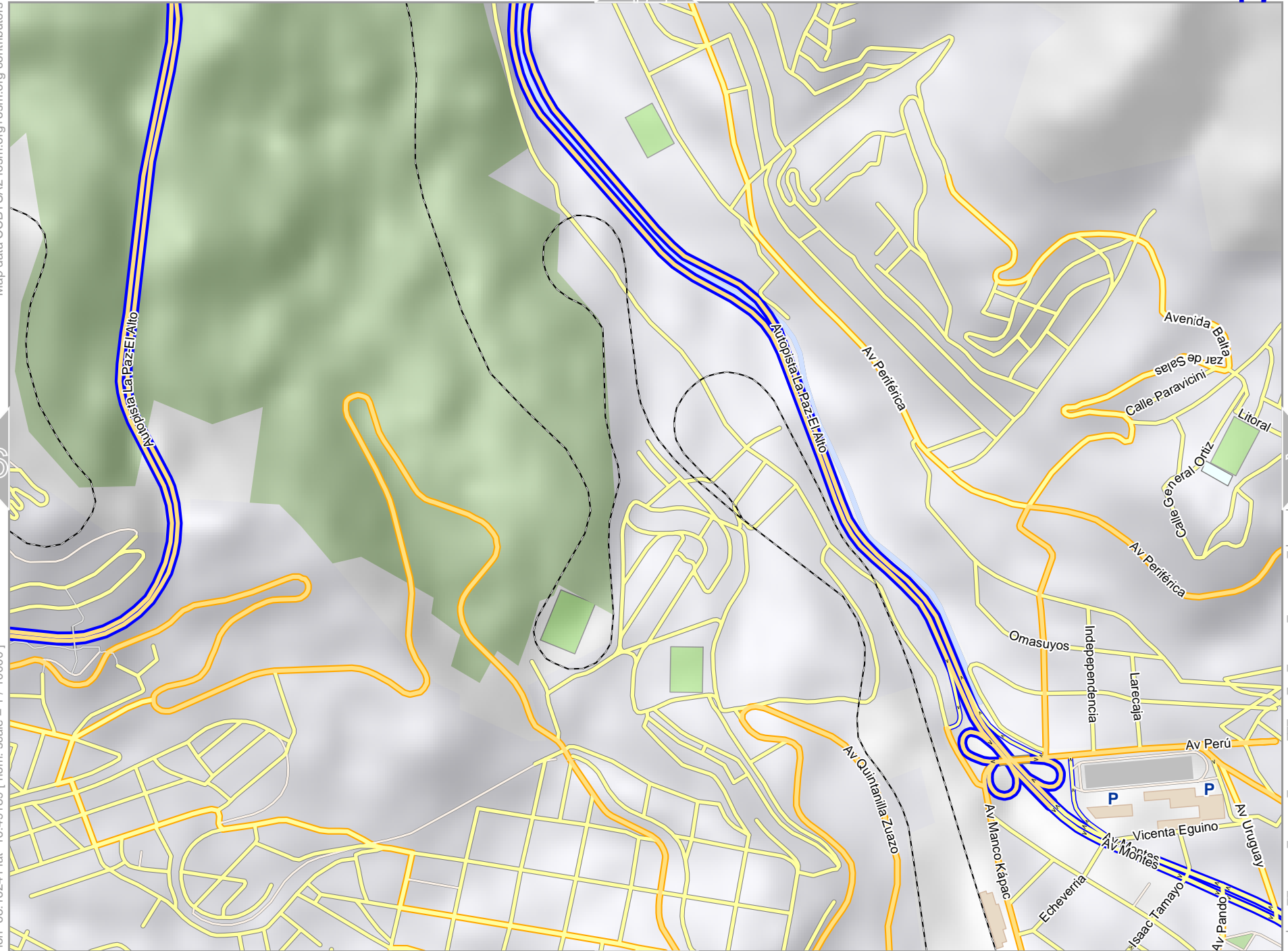
lon -68.13905 lat -16.47509

16

18

lon -68.16241 lat -16.49189 [nom. scale = 1 / 10000]

pdfmap_20220912_202632_LA_PAZ_BOLIVIA_-68.127_-16.466_643.pdf



0 100 m 1000 m

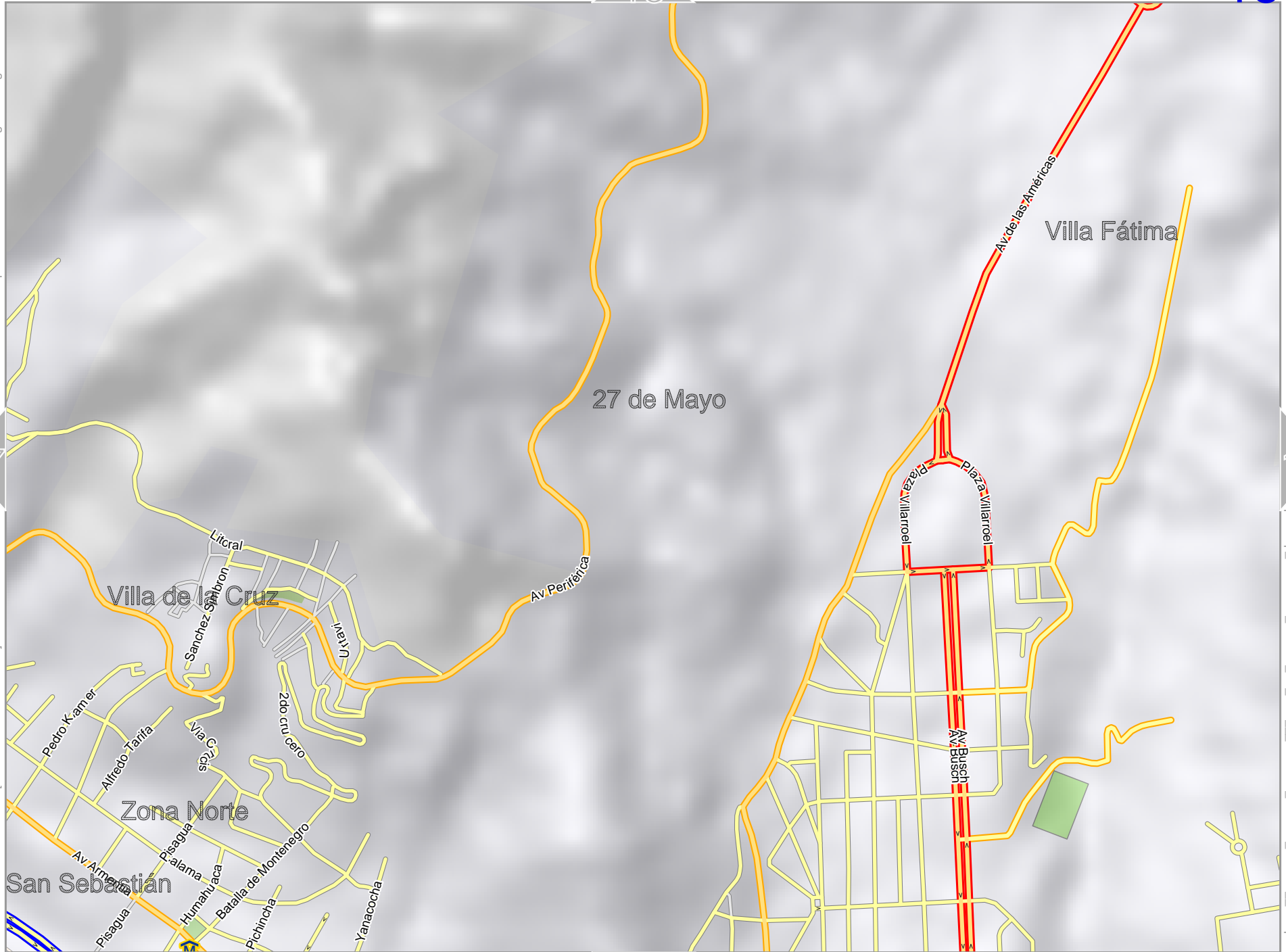
22

Map data © CC BY-SA 2.0, OpenStreetMap contributors

lon -68.115691 lat -16.47509

pdfmap, 20220912_202632_LA_PAZ_BOLIVIA_-68.127_-16.466_643.pdf

lon -68.13905 lat -16.49189 [nom. scale = 1 / 10000]



14

Map data © OpenStreetMap contributors

lon -68.09234 lat -16.47509

Petrolero

18

20

lon -68.11569 lat -16.49189 [ncm. scale = 1 / 10000]

pdfmap_20220912_202632_LA_PAZ_BOLIVIA_-68.127_-16.466_643.pdf

Villa Copacabana

Av. Ciudad del Niño



24

LA PAZ - BOLIVIA

20

top

15

10

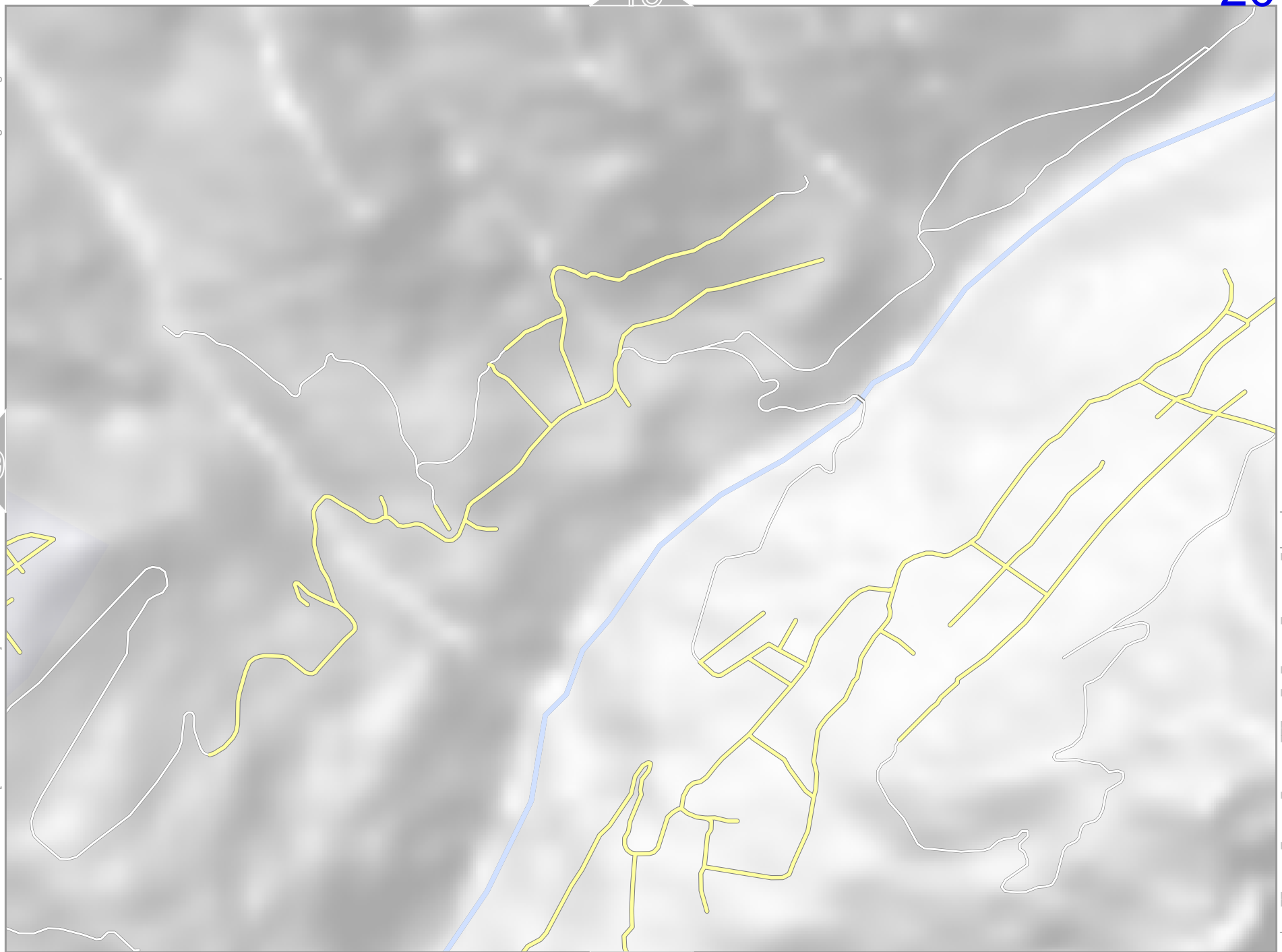
25

Map data © OpenStreetMap contributors

lon -68.09234 lat -16.49189 [nom. scale = 1 / 10000]

lon -68.06898 lat -16.47509

pdfmap_20220912_202632_LA_PAZ_BOLIVIA_-68.127_-16.466_643.pdf



LA PAZ - BOLIVIA

Map data CC BY-SA 2.0 fism.org+osm.org contributors

lon: -68.18576 lat: -16.50869 [ncm, scale = 1 / 10000]

lon: -68.16241 lat: -16.49189

pdfmap: 20220912_202632_LA_PAZ_BOLIVIA_-68.127_-16.466_643.pdf



El Alto

Map data CC BY-SA 2.0 fism.org-osm.org contributors

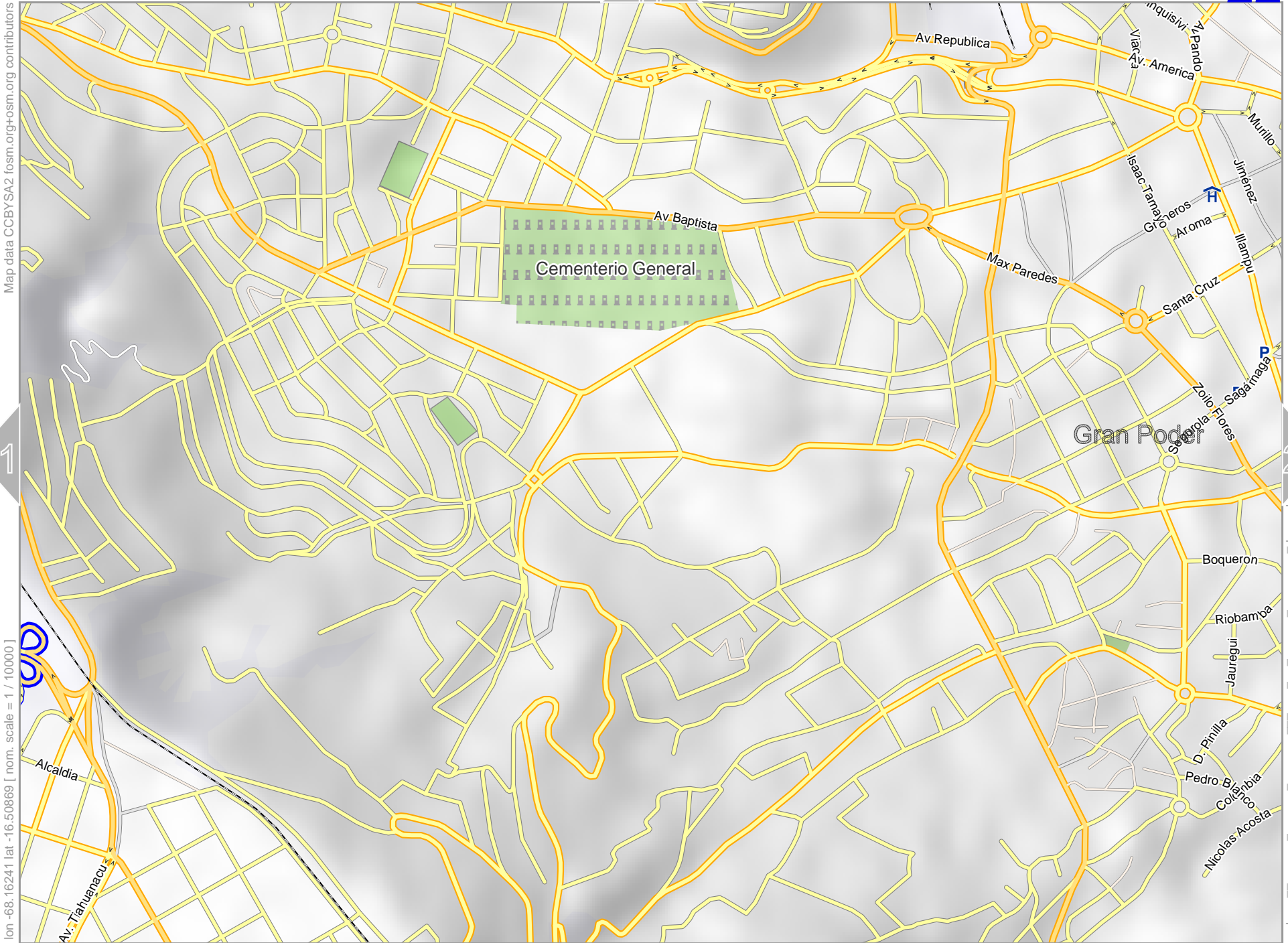
lon -68.13905 lat -16.49189

21

23

lon -68.16241 lat -16.50869 [nom. scale = 1 / 10000]

pdfmap, 20220912, 202632, LA_PAZ_BOLIVIA, -68.127, -16.466, 643.pdf



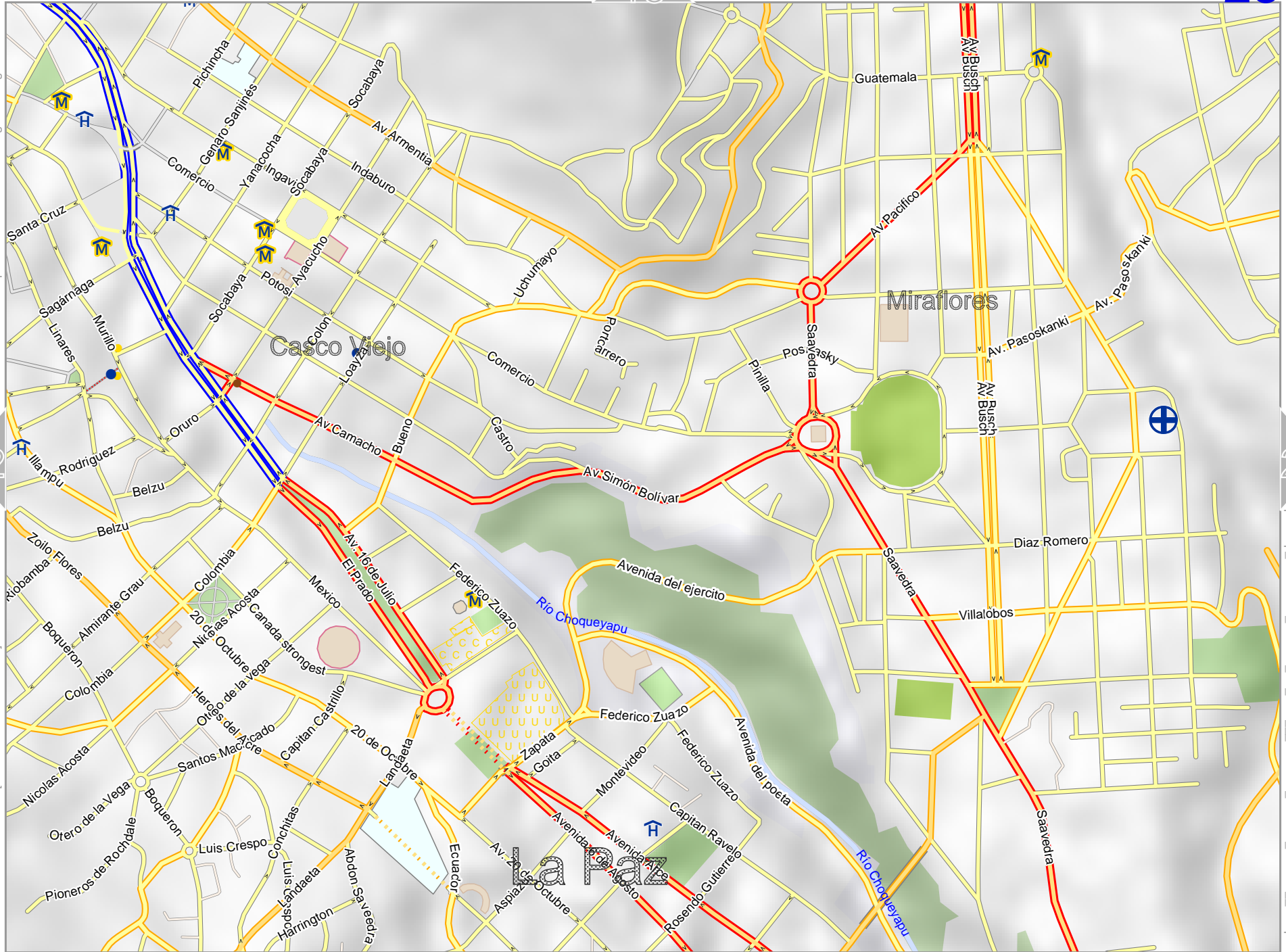
0 100 m 1000 m

Map data © CC BY SA 2.0 f osm.org - osm.org contributors

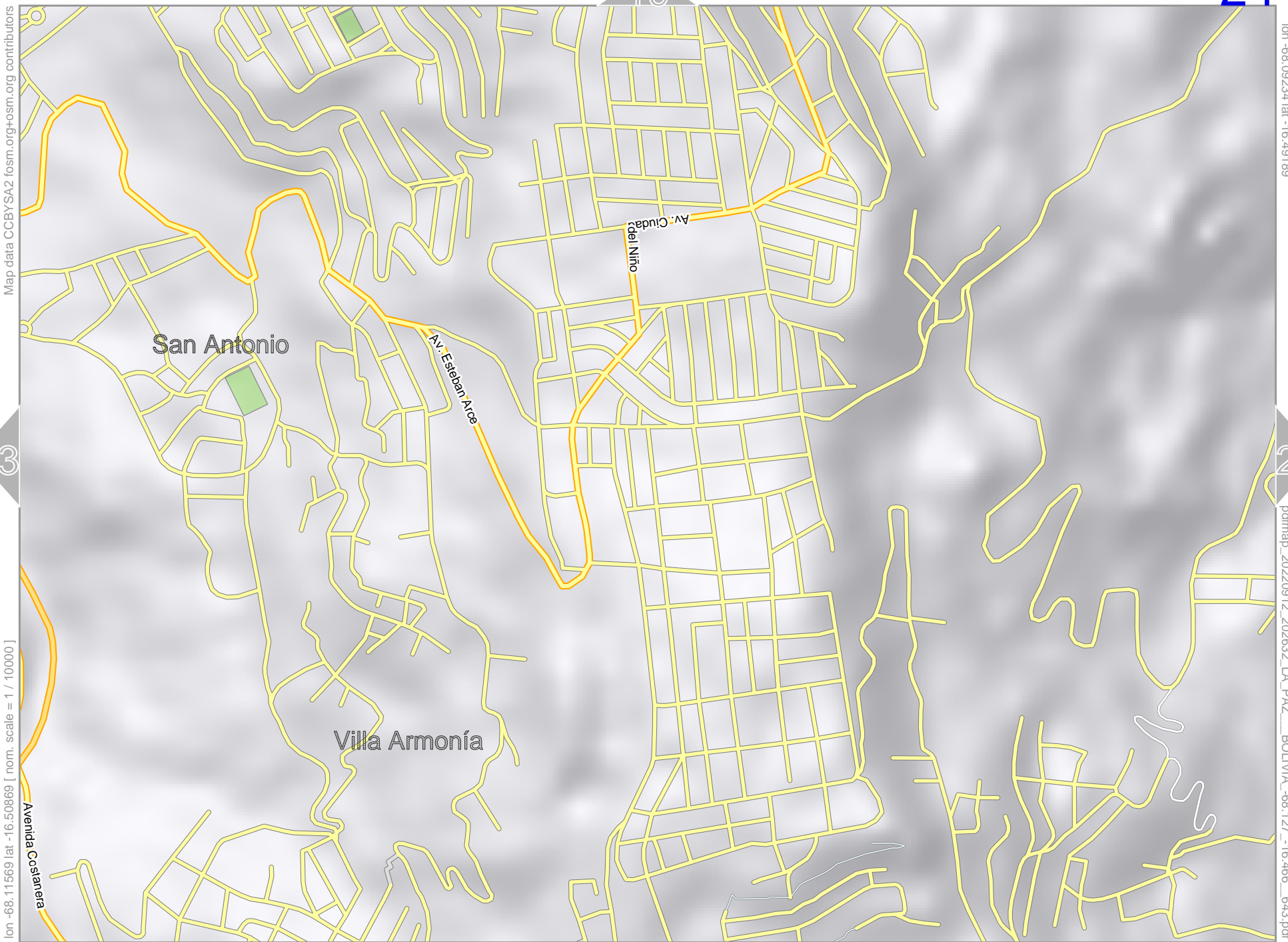
lon -68.115691 lat -16.49189

lon -68.13905 lat -16.50869 [nom. scale = 1 / 100000]

pdfmap, 20220912, 202632, LA_PAZ_BOLIVIA, -68.127, -16.466, 643.pdf



0 100 m 1000 m



Map data © CC BY-SA 2.0 f osm.org+osm.org contributors

[nom. scale = 1 / 100000] lon -68.11569 lat -16.50869

lon -68.09234 lat -16.49189

pdfmap_20220912_202632_LA_PAZ_BOLIVIA_-68.127_-16.466_643.pdf



20

24

Map data © CCBYSA2 fosm.org+osm.org contributors

lon -68.09234 lat -16.50869 [ncm. scale = 1 / 10000]

lon -68.06998 lat -16.49189

pdfmap_20220912_202632_LA_PAZ_BOLIVIA_-68.127_-16.466_643.pdf

0 100 m 1000 m

Av. Alfredo Ovando Candia
Av. Circunvalación